

SENTOSA COVE
seascape



SITE PLAN

- A** Guard House
- B** Arrival Plaza
- C** The Mangrove Path
- D** Gymnasium
- E** The Great Falls
- F** Forest Pool
- G** Wading Pool
- H** Garden Terraces
- I** Great Deck
- J** The Cascade
- K** Function Room
- L** Party Terrace
- M** Plumeria Alley
- N** Ocean Terraces
- O** Sky Pool
- P** Palm Garden



UNIT DISTRIBUTION CHARTS

57 COVE WAY

	UNIT 01	UNIT 02	UNIT 03	UNIT 04	UNIT 05	UNIT 06	UNIT 07
ATTIC #08	TYPE SV2 616 sq.m. 6,631 sq.ft.	TYPE P1c 314 sq.m. 3,380 sq.ft.	TYPE P1a 314 sq.m. 3,380 sq.ft.	TYPE P1b 314 sq.m. 3,380 sq.ft.	TYPE P1a 314 sq.m. 3,380 sq.ft.	TYPE P2a 384 sq.m. 4,133 sq.ft.	TYPE P2c 394 sq.m. 4,241 sq.ft.
STOREY #07	TYPE D 378 sq.m. 4,069 sq.ft.	TYPE A3 201 sq.m. 2,164 sq.ft.	TYPE A1 202 sq.m. 2,174 sq.ft.	TYPE A2 201 sq.m. 2,164 sq.ft.	TYPE A1 202 sq.m. 2,174 sq.ft.	TYPE B1 249 sq.m. 2,680 sq.ft.	TYPE B3 265 sq.m. 2,852 sq.ft.
STOREY #06	TYPE D 378 sq.m. 4,069 sq.ft.	TYPE A3 201 sq.m. 2,164 sq.ft.	TYPE A1 202 sq.m. 2,174 sq.ft.	TYPE A2 201 sq.m. 2,164 sq.ft.	TYPE A1 202 sq.m. 2,174 sq.ft.	TYPE B1 249 sq.m. 2,680 sq.ft.	TYPE B3 265 sq.m. 2,852 sq.ft.
STOREY #05	TYPE D 378 sq.m. 4,069 sq.ft.	TYPE A3 201 sq.m. 2,164 sq.ft.	TYPE A1 202 sq.m. 2,174 sq.ft.	TYPE A2 201 sq.m. 2,164 sq.ft.	TYPE A1 202 sq.m. 2,174 sq.ft.	TYPE B1 249 sq.m. 2,680 sq.ft.	TYPE B3 265 sq.m. 2,852 sq.ft.
STOREY #04	TYPE D 378 sq.m. 4,069 sq.ft.	TYPE A3 201 sq.m. 2,164 sq.ft.	TYPE A1 202 sq.m. 2,174 sq.ft.	TYPE A2 201 sq.m. 2,164 sq.ft.	TYPE A1 202 sq.m. 2,174 sq.ft.	TYPE B1 249 sq.m. 2,680 sq.ft.	TYPE B3 265 sq.m. 2,852 sq.ft.
STOREY #03	TYPE D 378 sq.m. 4,069 sq.ft.	TYPE A3 201 sq.m. 2,164 sq.ft.	TYPE A1 202 sq.m. 2,174 sq.ft.	TYPE A2 201 sq.m. 2,164 sq.ft.	TYPE A1 202 sq.m. 2,174 sq.ft.	TYPE B1 249 sq.m. 2,680 sq.ft.	TYPE B3 265 sq.m. 2,852 sq.ft.
STOREY #02	TYPE SV1 897 sq.m. 9,655 sq.ft.	TYPE A3 201 sq.m. 2,164 sq.ft.	TYPE A1 202 sq.m. 2,174 sq.ft.	TYPE A2 201 sq.m. 2,164 sq.ft.	TYPE A1 202 sq.m. 2,174 sq.ft.	TYPE B1 249 sq.m. 2,680 sq.ft.	TYPE B3 265 sq.m. 2,852 sq.ft.
STOREY #01		TYPE A3g 217 sq.m. 2,336 sq.ft.	TYPE A1g 217 sq.m. 2,336 sq.ft.	TYPE A2g 217 sq.m. 2,336 sq.ft.	TYPE A1g 217 sq.m. 2,336 sq.ft.	TYPE B1g 266 sq.m. 2,863 sq.ft.	TYPE B3g 277 sq.m. 2,982 sq.ft.

	TYPE A THREE BEDROOM
	TYPE B, C & D FOUR BEDROOM
	TYPE P PENTHOUSE
	TYPE SV SKY & SEA VILLA

59 COVE WAY

	UNIT 08	UNIT 09	UNIT 10	UNIT 11	UNIT 12	UNIT 13	UNIT 14
ATTIC #08	TYPE P2c 394 sq.m. 4,241 sq.ft.	TYPE P2a 384 sq.m. 4,133 sq.ft.	TYPE P2b 383 sq.m. 4,123 sq.ft.	TYPE P2a 384 sq.m. 4,133 sq.ft.	TYPE P1a 314 sq.m. 3,380 sq.ft.	TYPE P1b 314 sq.m. 3,380 sq.ft.	TYPE P1a 314 sq.m. 3,380 sq.ft.
STOREY #07	TYPE B3 265 sq.m. 2,852 sq.ft.	TYPE B1 249 sq.m. 2,680 sq.ft.	TYPE B2 248 sq.m. 2,669 sq.ft.	TYPE B1 249 sq.m. 2,680 sq.ft.	TYPE A1 202 sq.m. 2,174 sq.ft.	TYPE A2 201 sq.m. 2,164 sq.ft.	TYPE A1 202 sq.m. 2,174 sq.ft.
STOREY #06	TYPE B3 265 sq.m. 2,852 sq.ft.	TYPE B1 249 sq.m. 2,680 sq.ft.	TYPE B2 248 sq.m. 2,669 sq.ft.	TYPE B1 249 sq.m. 2,680 sq.ft.	TYPE A1 202 sq.m. 2,174 sq.ft.	TYPE A2 201 sq.m. 2,164 sq.ft.	TYPE A1 202 sq.m. 2,174 sq.ft.
STOREY #05	TYPE B3 265 sq.m. 2,852 sq.ft.	TYPE B1 249 sq.m. 2,680 sq.ft.	TYPE B2 248 sq.m. 2,669 sq.ft.	TYPE B1 249 sq.m. 2,680 sq.ft.	TYPE A1 202 sq.m. 2,174 sq.ft.	TYPE A2 201 sq.m. 2,164 sq.ft.	TYPE A1 202 sq.m. 2,174 sq.ft.
STOREY #04	TYPE B3 265 sq.m. 2,852 sq.ft.	TYPE B1 249 sq.m. 2,680 sq.ft.	TYPE B2 248 sq.m. 2,669 sq.ft.	TYPE B1 249 sq.m. 2,680 sq.ft.	TYPE A1 202 sq.m. 2,174 sq.ft.	TYPE A2 201 sq.m. 2,164 sq.ft.	TYPE A1 202 sq.m. 2,174 sq.ft.
STOREY #03	TYPE B3 265 sq.m. 2,852 sq.ft.	TYPE B1 249 sq.m. 2,680 sq.ft.	TYPE B2 248 sq.m. 2,669 sq.ft.	TYPE B1 249 sq.m. 2,680 sq.ft.	TYPE A1 202 sq.m. 2,174 sq.ft.	TYPE A2 201 sq.m. 2,164 sq.ft.	TYPE A1 202 sq.m. 2,174 sq.ft.
STOREY #02	TYPE B3 265 sq.m. 2,852 sq.ft.	TYPE B1 249 sq.m. 2,680 sq.ft.	TYPE B2 248 sq.m. 2,669 sq.ft.	TYPE B1 249 sq.m. 2,680 sq.ft.	TYPE A1 202 sq.m. 2,174 sq.ft.	TYPE A2 201 sq.m. 2,164 sq.ft.	TYPE A1 202 sq.m. 2,174 sq.ft.
STOREY #01	TYPE B3g 277 sq.m. 2,982 sq.ft.	TYPE B1g 266 sq.m. 2,863 sq.ft.	TYPE B2g 265 sq.m. 2,852 sq.ft.	TYPE B1g 266 sq.m. 2,863 sq.ft.	TYPE A1g 217 sq.m. 2,336 sq.ft.	TYPE A2g 217 sq.m. 2,336 sq.ft.	TYPE A1g 217 sq.m. 2,336 sq.ft.

	UNIT 15	UNIT 16	UNIT 17	UNIT 18	UNIT 19
ATTIC #08	TYPE P1b 314 sq.m. 3,380 sq.ft.	TYPE P1d 314 sq.m. 3,380 sq.ft.	TYPE P1e 314 sq.m. 3,380 sq.ft.	TYPE P1a 314 sq.m. 3,380 sq.ft.	TYPE P3 395 sq.m. 4,252 sq.ft.
STOREY #07	TYPE A2 201 sq.m. 2,164 sq.ft.	TYPE A1 202 sq.m. 2,174 sq.ft.	TYPE A2 201 sq.m. 2,164 sq.ft.	TYPE A1 202 sq.m. 2,174 sq.ft.	TYPE C 276 sq.m. 2,971 sq.ft.
STOREY #06	TYPE A2 201 sq.m. 2,164 sq.ft.	TYPE A1 202 sq.m. 2,174 sq.ft.	TYPE A2 201 sq.m. 2,164 sq.ft.	TYPE A1 202 sq.m. 2,174 sq.ft.	TYPE C 276 sq.m. 2,971 sq.ft.
STOREY #05	TYPE A2 201 sq.m. 2,164 sq.ft.	TYPE A1 202 sq.m. 2,174 sq.ft.	TYPE A2 201 sq.m. 2,164 sq.ft.	TYPE A1 202 sq.m. 2,174 sq.ft.	TYPE C 276 sq.m. 2,971 sq.ft.
STOREY #04	TYPE A2 201 sq.m. 2,164 sq.ft.	TYPE A1 202 sq.m. 2,174 sq.ft.	TYPE A2 201 sq.m. 2,164 sq.ft.	TYPE A1 202 sq.m. 2,174 sq.ft.	TYPE C 276 sq.m. 2,971 sq.ft.
STOREY #03	TYPE A2 201 sq.m. 2,164 sq.ft.	TYPE A1 202 sq.m. 2,174 sq.ft.	TYPE A2 201 sq.m. 2,164 sq.ft.	TYPE A1 202 sq.m. 2,174 sq.ft.	TYPE C 276 sq.m. 2,971 sq.ft.
STOREY #02	TYPE A2 201 sq.m. 2,164 sq.ft.	TYPE A1 202 sq.m. 2,174 sq.ft.	TYPE A2 201 sq.m. 2,164 sq.ft.	TYPE A1 202 sq.m. 2,174 sq.ft.	TYPE C 276 sq.m. 2,971 sq.ft.
STOREY #01	TYPE A2g 217 sq.m. 2,336 sq.ft.	TYPE A1g 217 sq.m. 2,336 sq.ft.	TYPE A2g 217 sq.m. 2,336 sq.ft.	TYPE A1g 217 sq.m. 2,336 sq.ft.	TYPE Cg 291 sq.m. 3,132 sq.ft.

THREE BEDROOM

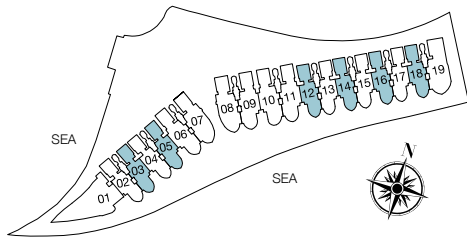
A1g

217 sq.m.
2,336 sq.ft.

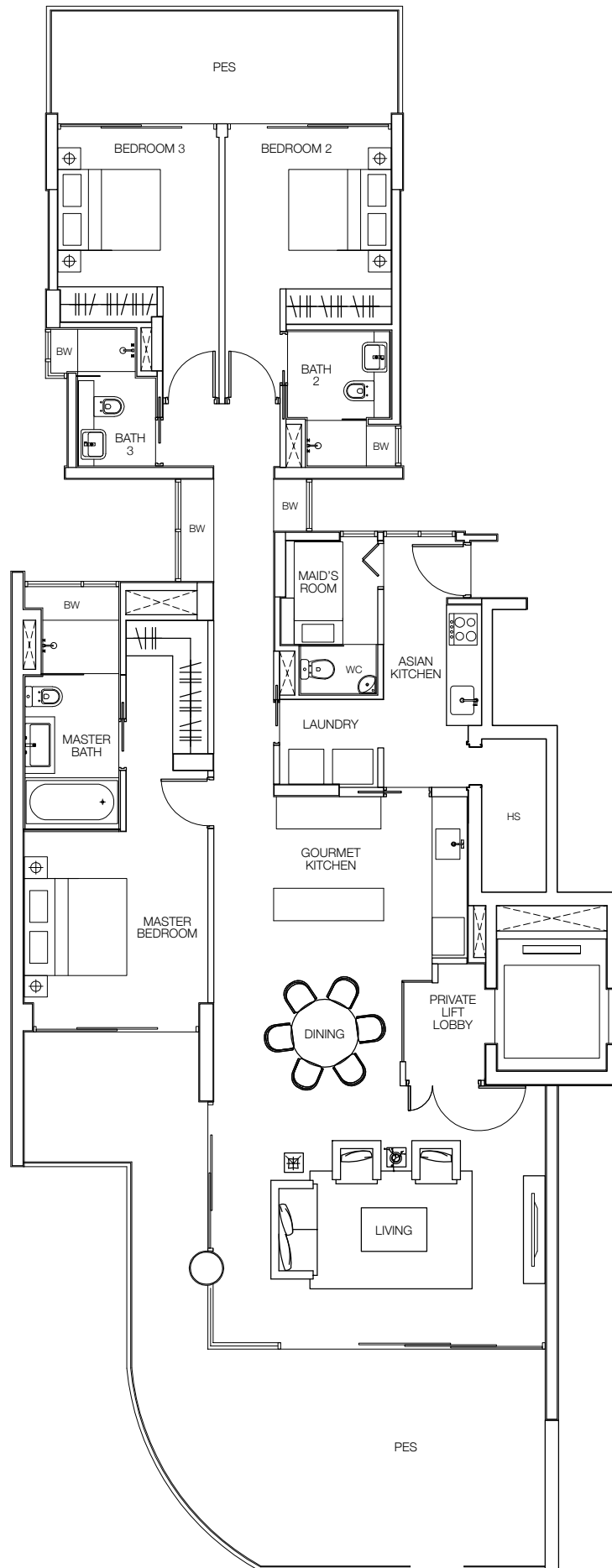
Including PES of 58 sq.m.

57 Cove Way #01-03, #01-05

59 Cove Way #01-12, #01-14, #01-16, #01-18



Plans are not to scale and are subject to any amendment as may be approved by the relevant authorities. All floor areas are approximate and are subject to final survey.



THREE BEDROOM

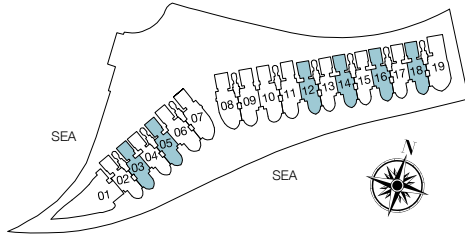
A1

202 sq.m.
2,174 sq.ft.

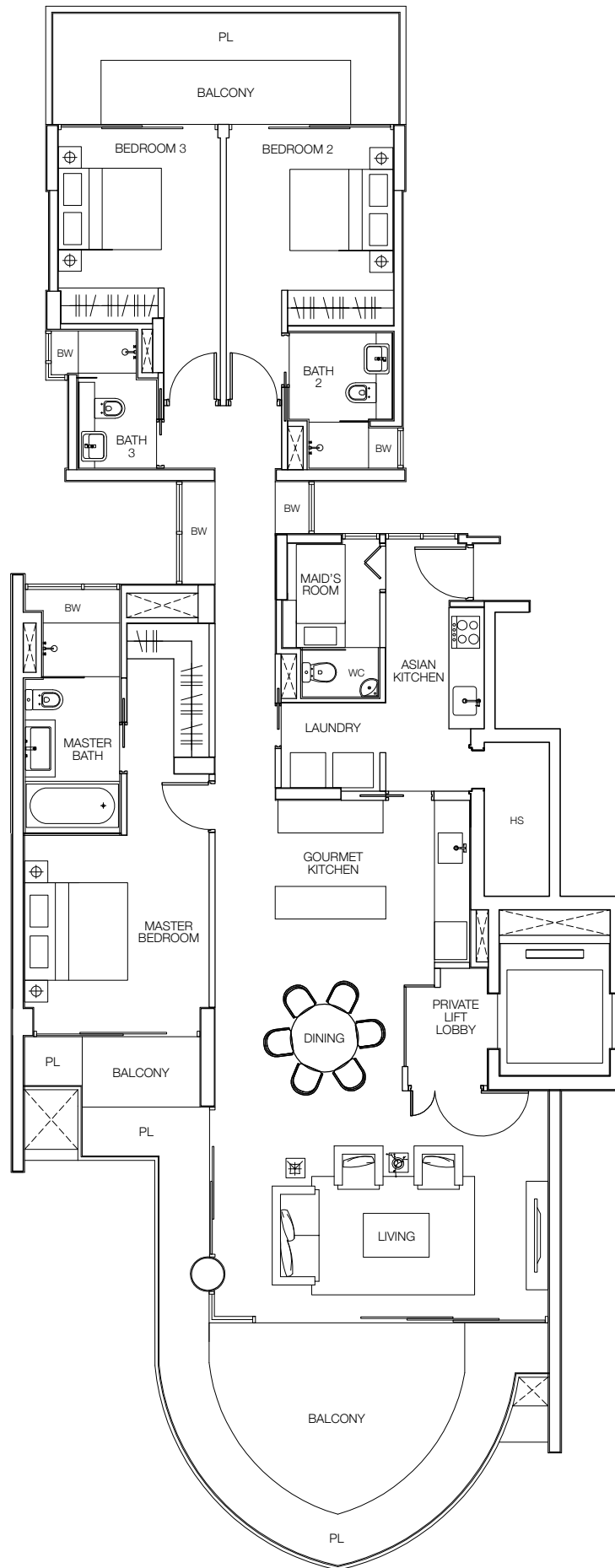
57 Cove Way #02-03 to #07-03, #02-05 to #07-05

59 Cove Way #02-12 to #07-12, #02-14 to #07-14,

#02-16 to #07-16, #02-18 to #07-18



Plans are not to scale and are subject to any amendment as may be approved by the relevant authorities. All floor areas are approximate and are subject to final survey.



THREE BEDROOM

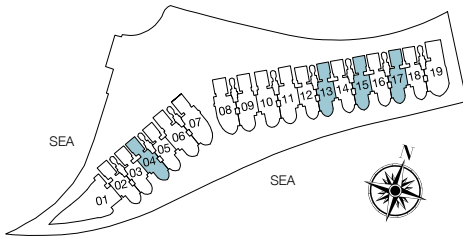
A2g

217 sq.m.
2,336 sq.ft.

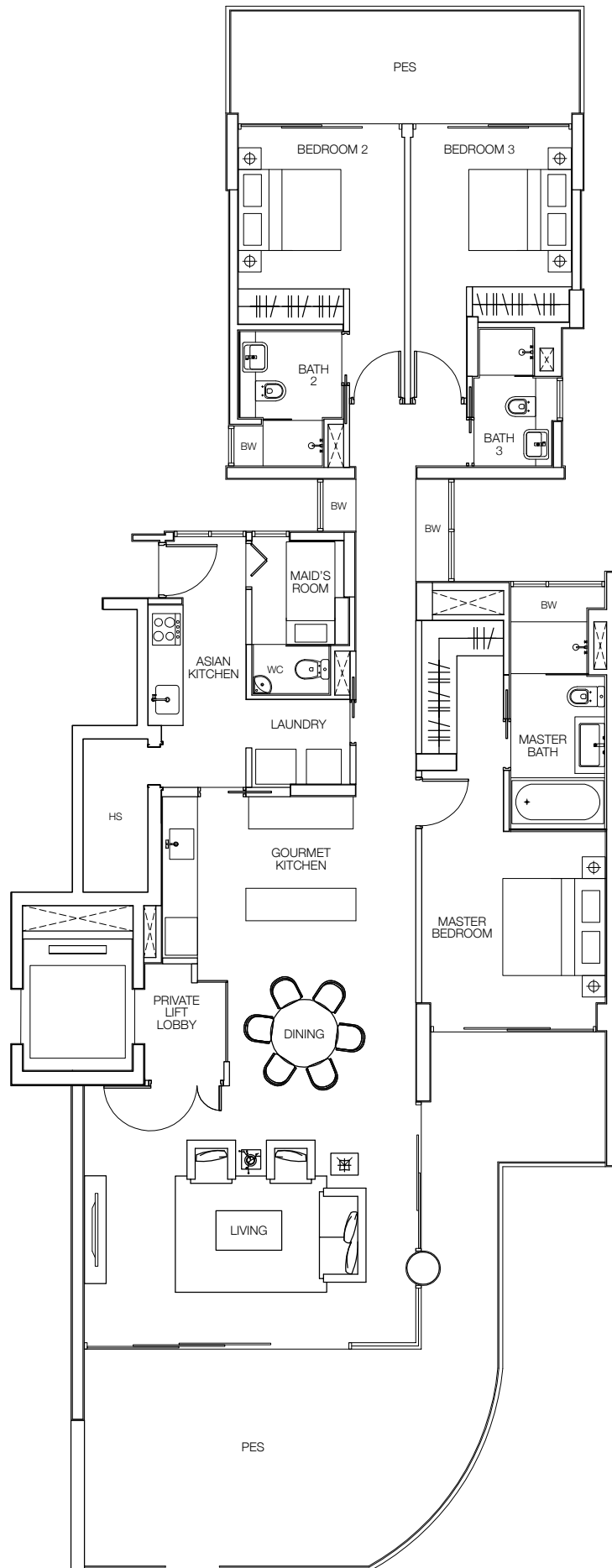
Including PES of 58 sq.m.

57 Cove Way #01-04

59 Cove Way #01-13, #01-15, #01-17



Plans are not to scale and are subject to any amendment as may be approved by the relevant authorities. All floor areas are approximate and are subject to final survey.



THREE BEDROOM

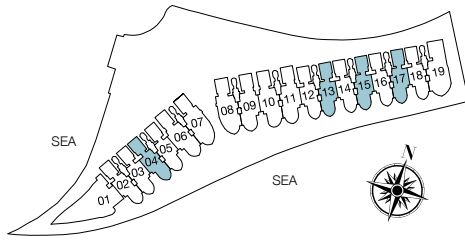
A2

201 sq.m.
2,164 sq.ft.

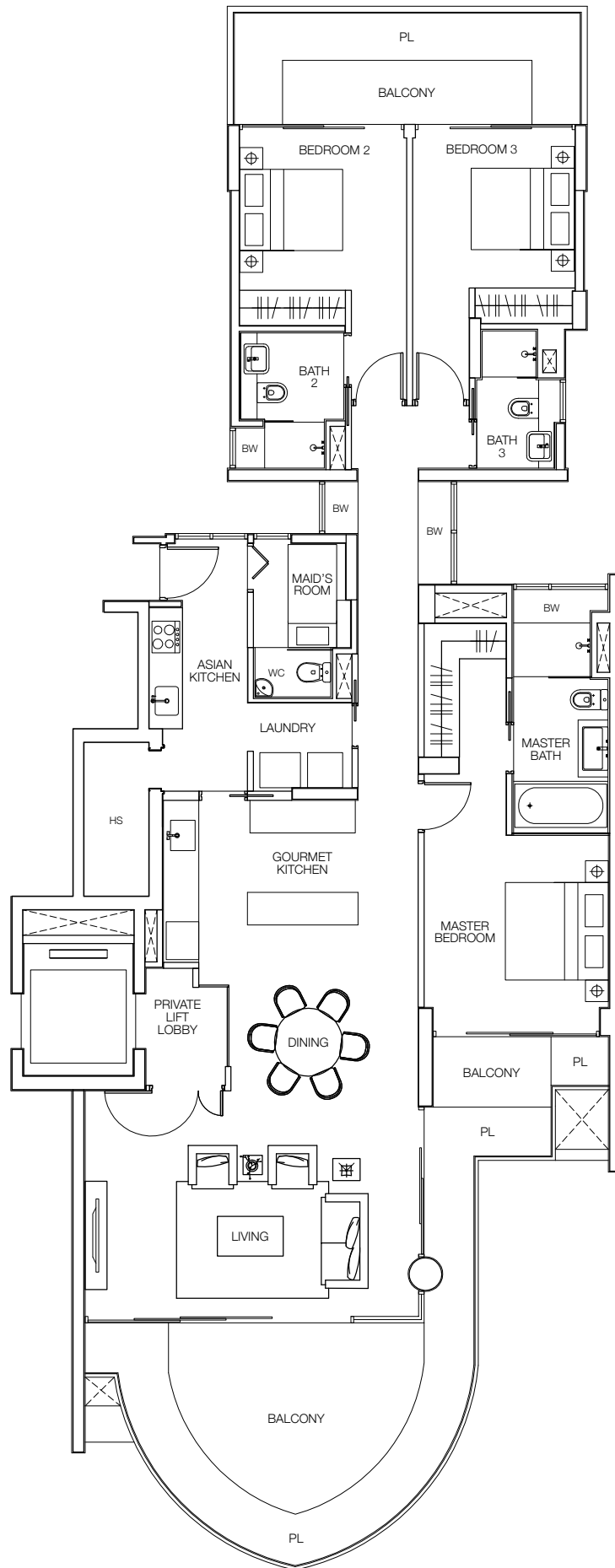
57 Cove Way #02-04 to #07-04

59 Cove Way #02-13 to #07-13, #02-15 to #07-15,

#02-17 to #07-17



Plans are not to scale and are subject to any amendment as may be approved by the relevant authorities. All floor areas are approximate and are subject to final survey.



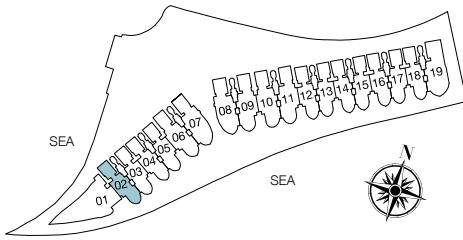
THREE BEDROOM

A3g

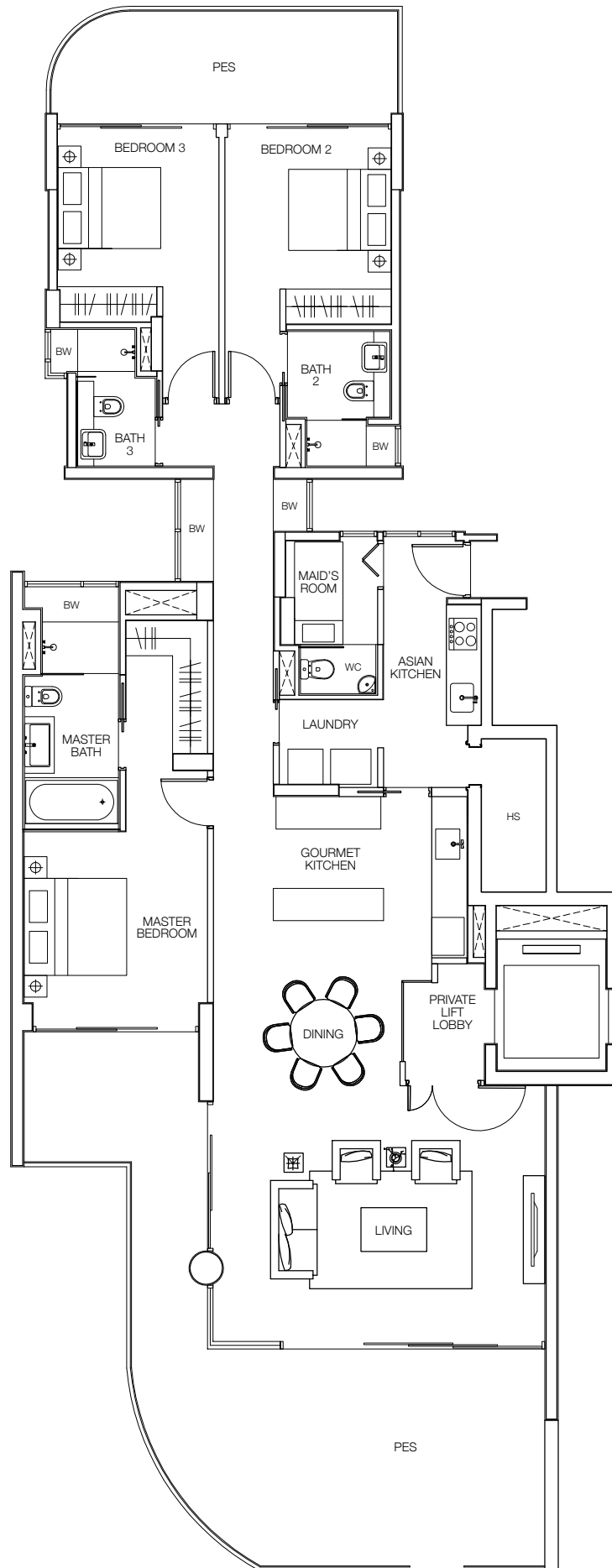
217 sq.m.
2,336 sq.ft.

Including PES of 57 sq.m.

57 Cove Way #01-02



Plans are not to scale and are subject to any amendment as may be approved by the relevant authorities. All floor areas are approximate and are subject to final survey.

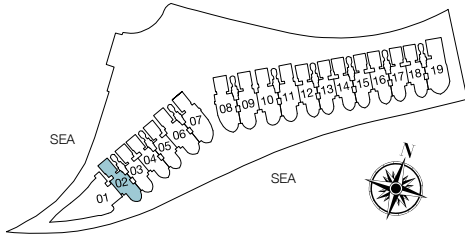


THREE BEDROOM

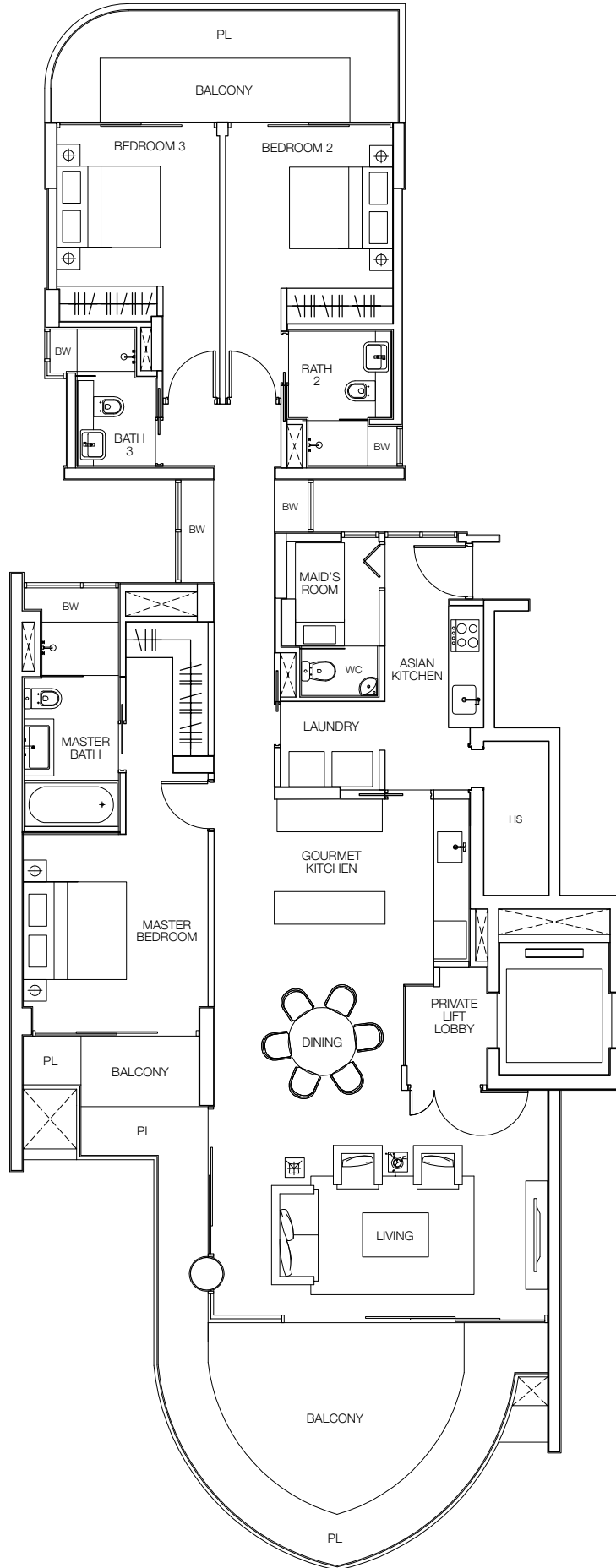
A3

201 sq.m.
2,164 sq.ft.

57 Cove Way #02-02 to #07-02



Plans are not to scale and are subject to any amendment as may be approved by the relevant authorities. All floor areas are approximate and are subject to final survey.



FOUR BEDROOM

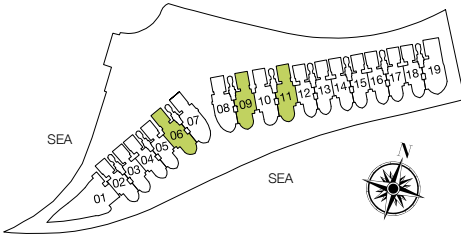
B1g

266 sq.m.
2,863 sq.ft.

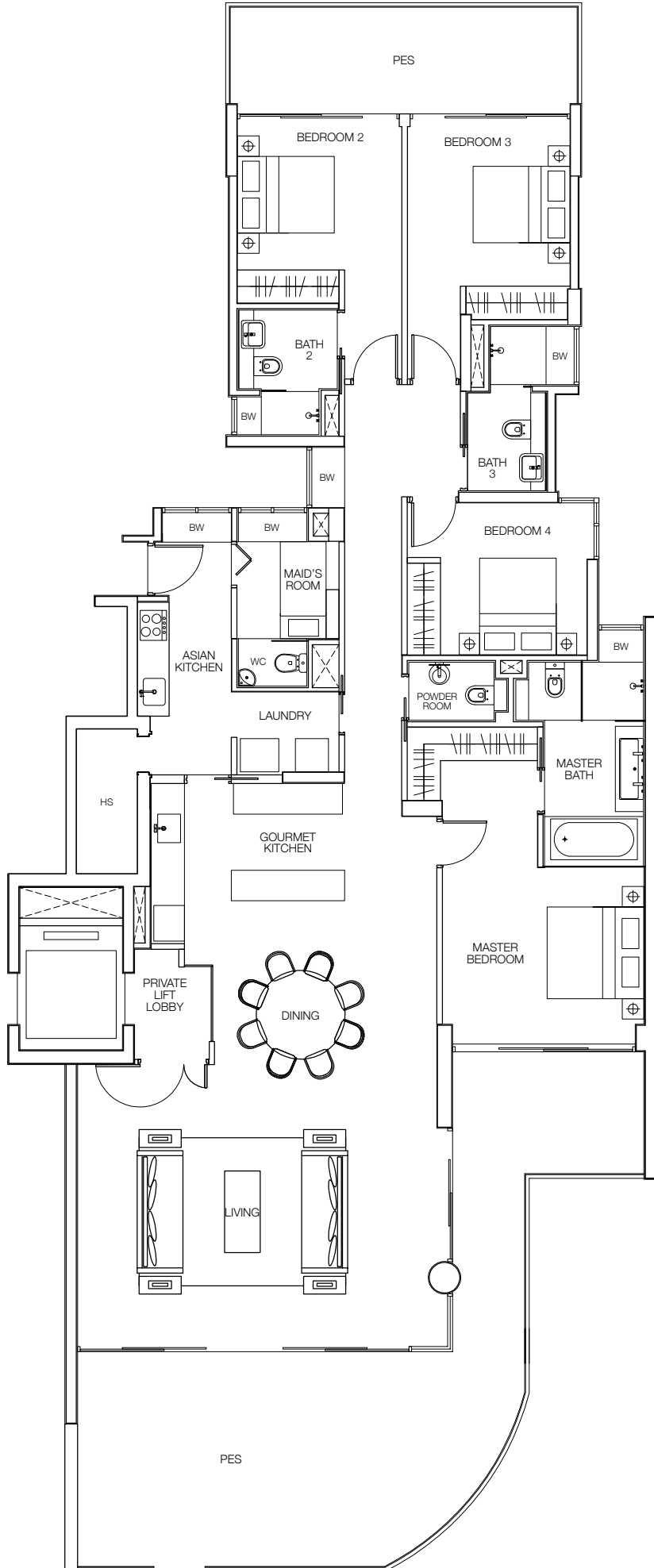
Including PES of 65 sq.m.

57 Cove Way #01-06

59 Cove Way #01-09, #01-11



Plans are not to scale and are subject to any amendment as may be approved by the relevant authorities. All floor areas are approximate and are subject to final survey.



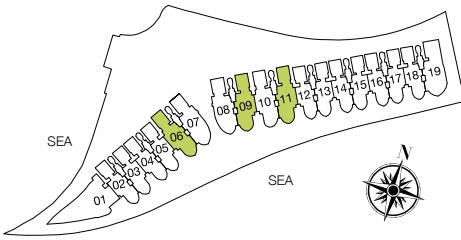
FOUR BEDROOM

B1

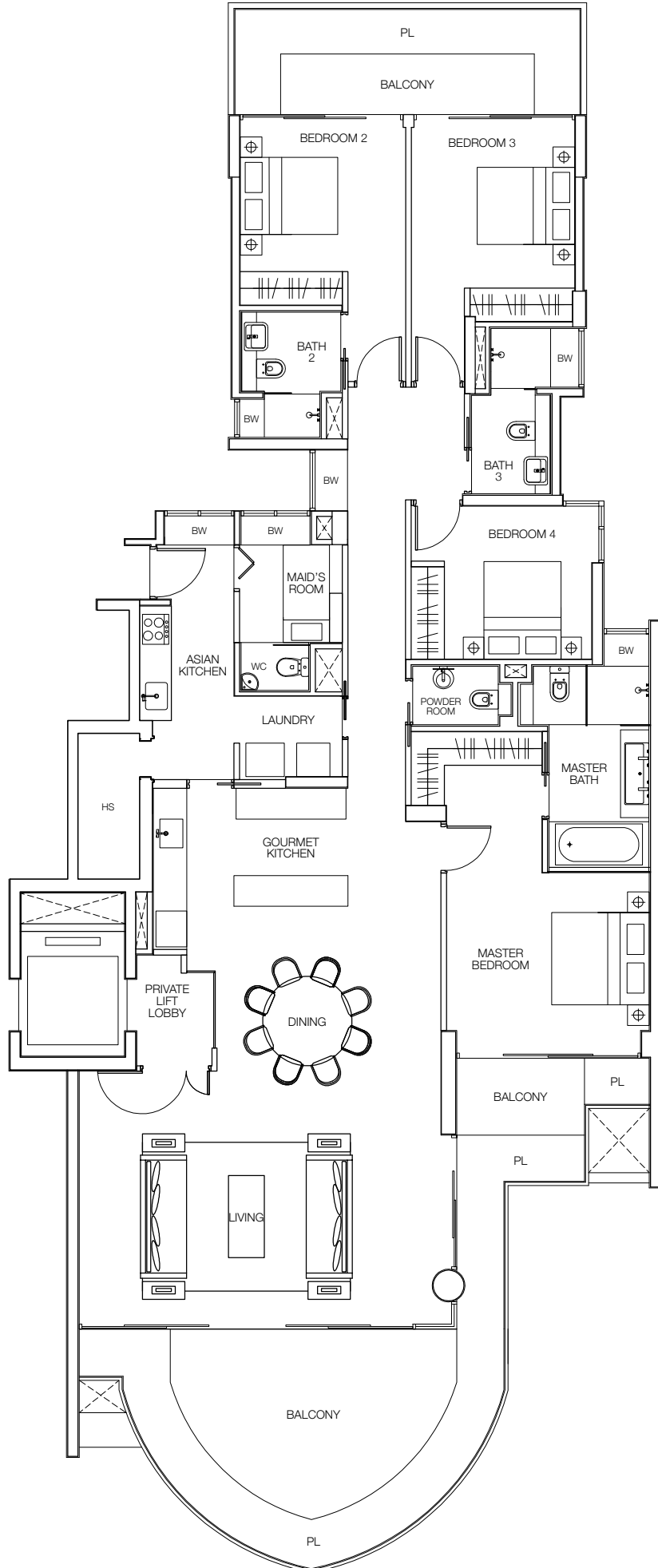
249 sq.m.
2,680 sq.ft.

57 Cove Way #02-06 to #07-06

59 Cove Way #02-09 to #07-09, #02-11 to #07-11



Plans are not to scale and are subject to any amendment as may be approved by the relevant authorities. All floor areas are approximate and are subject to final survey.



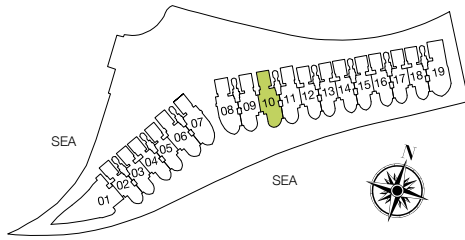
FOUR BEDROOM

B2g

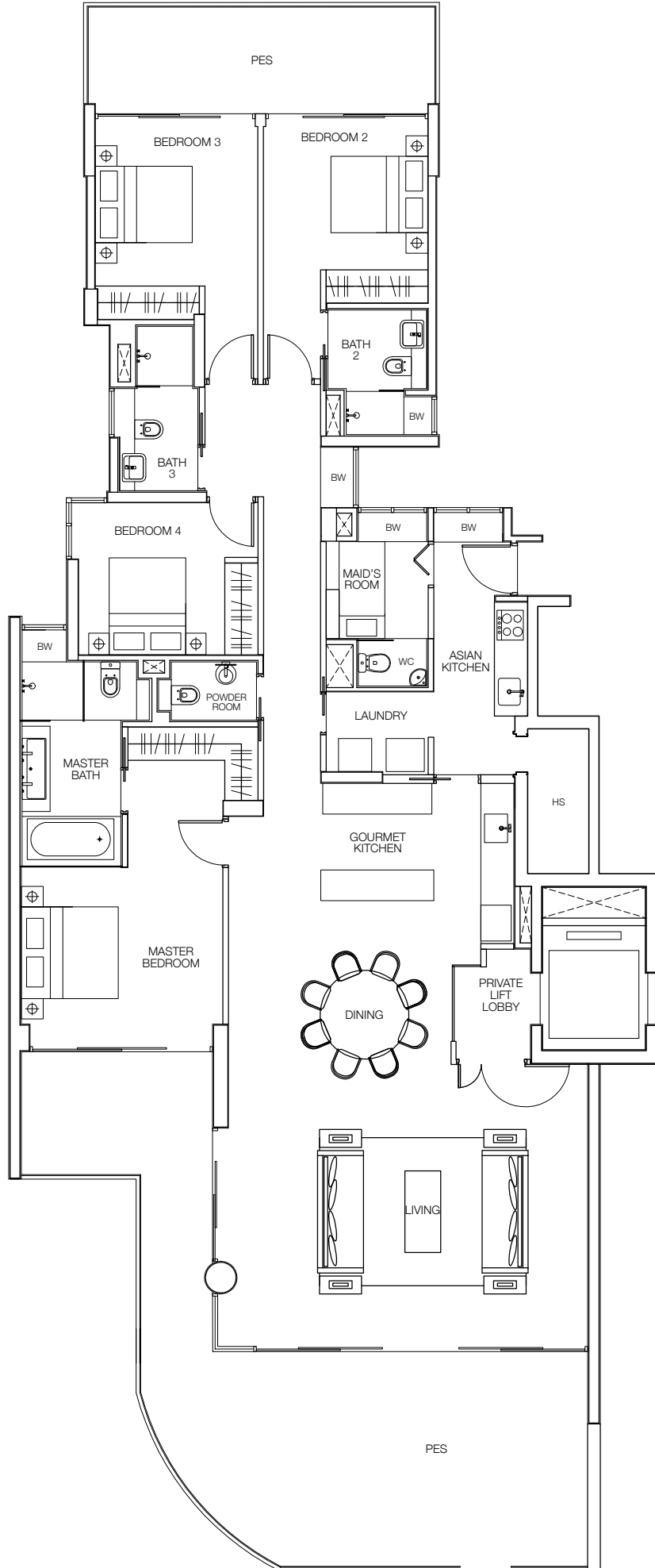
265 sq.m.
2,852 sq.ft.

Including PES of 65 sq.m.

59 Cove Way #01-10



Plans are not to scale and are subject to any amendment as may be approved by the relevant authorities. All floor areas are approximate and are subject to final survey.

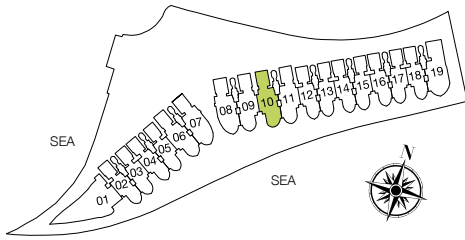


FOUR BEDROOM

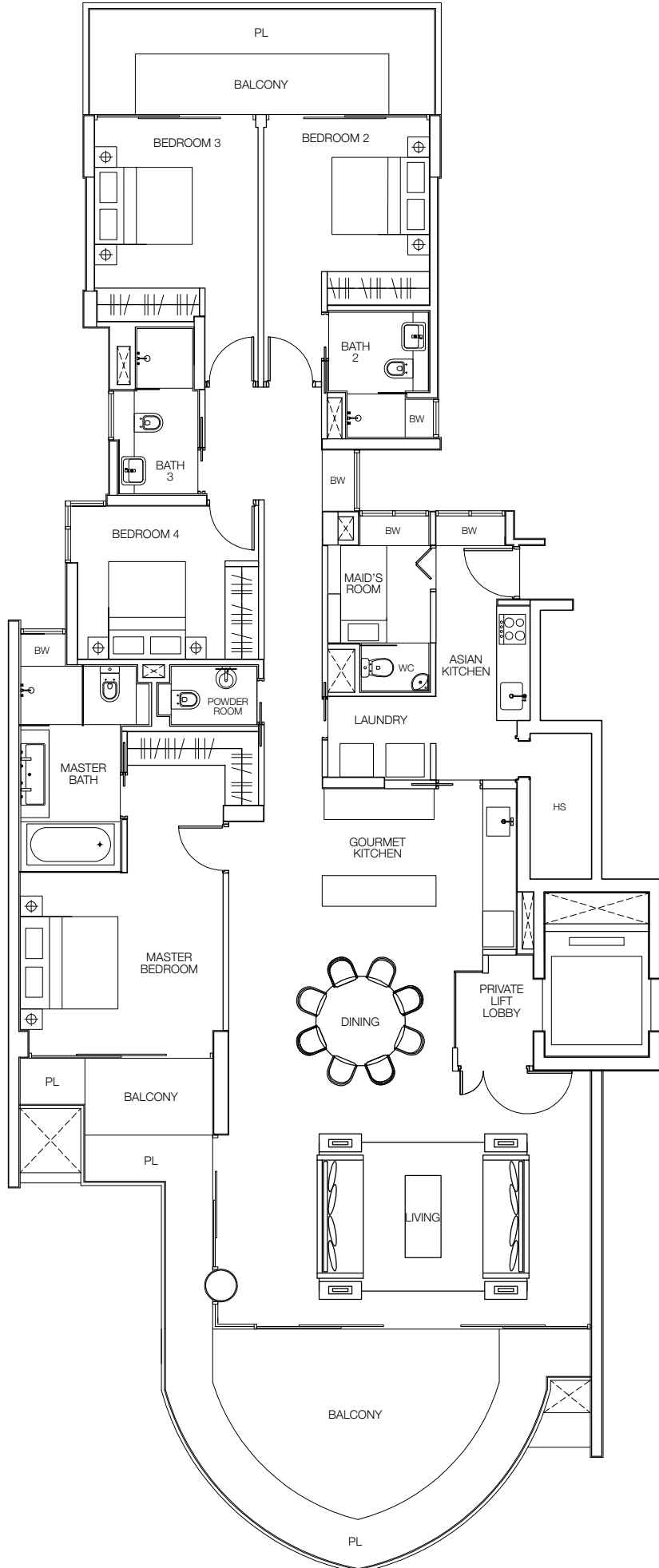
B2

248 sq.m.
2,669 sq.ft.

59 Cove Way #02-10 to #07-10



Plans are not to scale and are subject to any amendment as may be approved by the relevant authorities. All floor areas are approximate and are subject to final survey.



FOUR BEDROOM

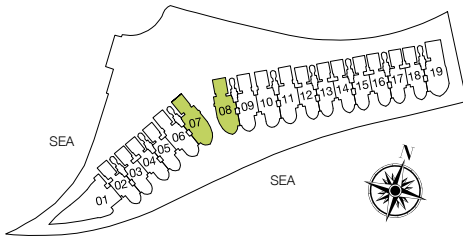
B3g

277 sq.m.
2,982 sq.ft.

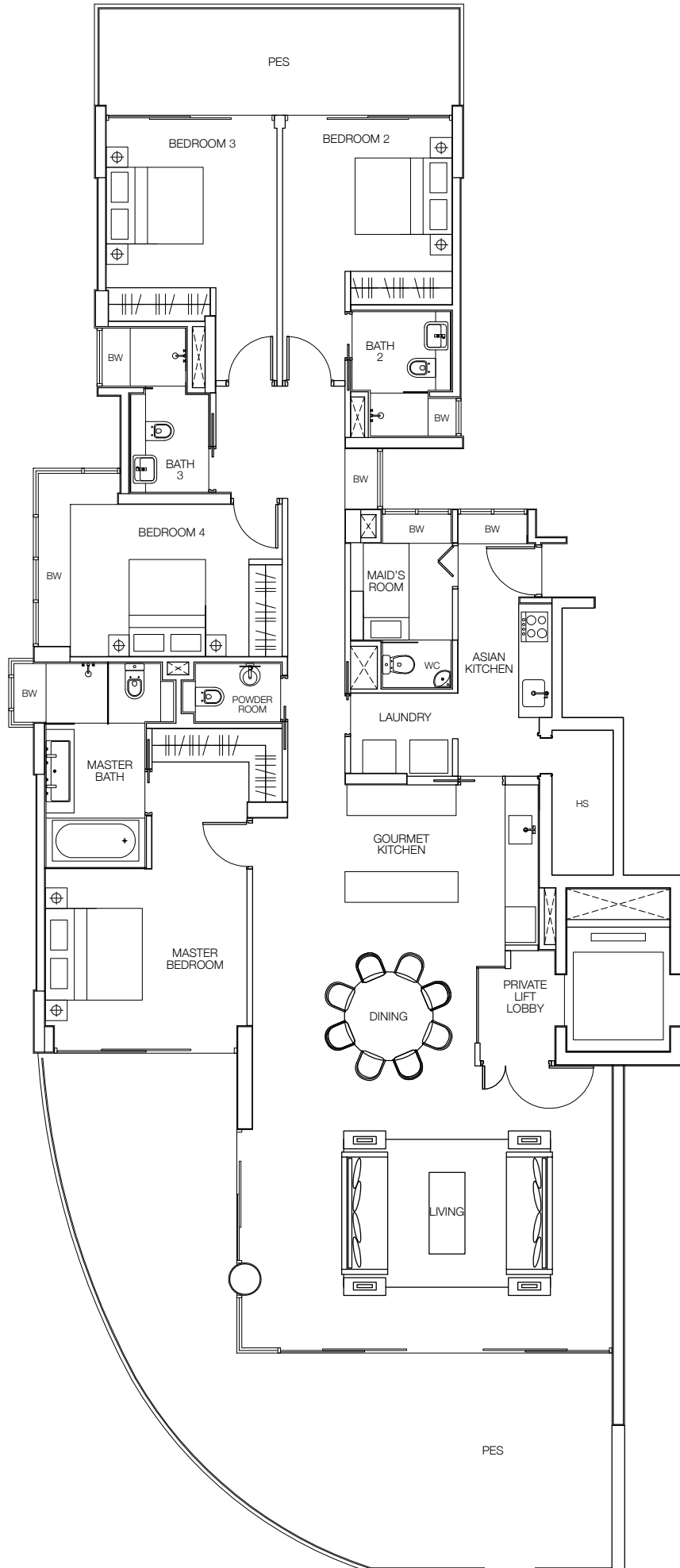
Including PES of 70 sq.m.

57 Cove Way #01-07

59 Cove Way #01-08



Plans are not to scale and are subject to any amendment as may be approved by the relevant authorities. All floor areas are approximate and are subject to final survey.



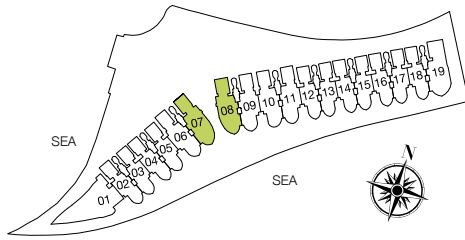
FOUR BEDROOM

B3

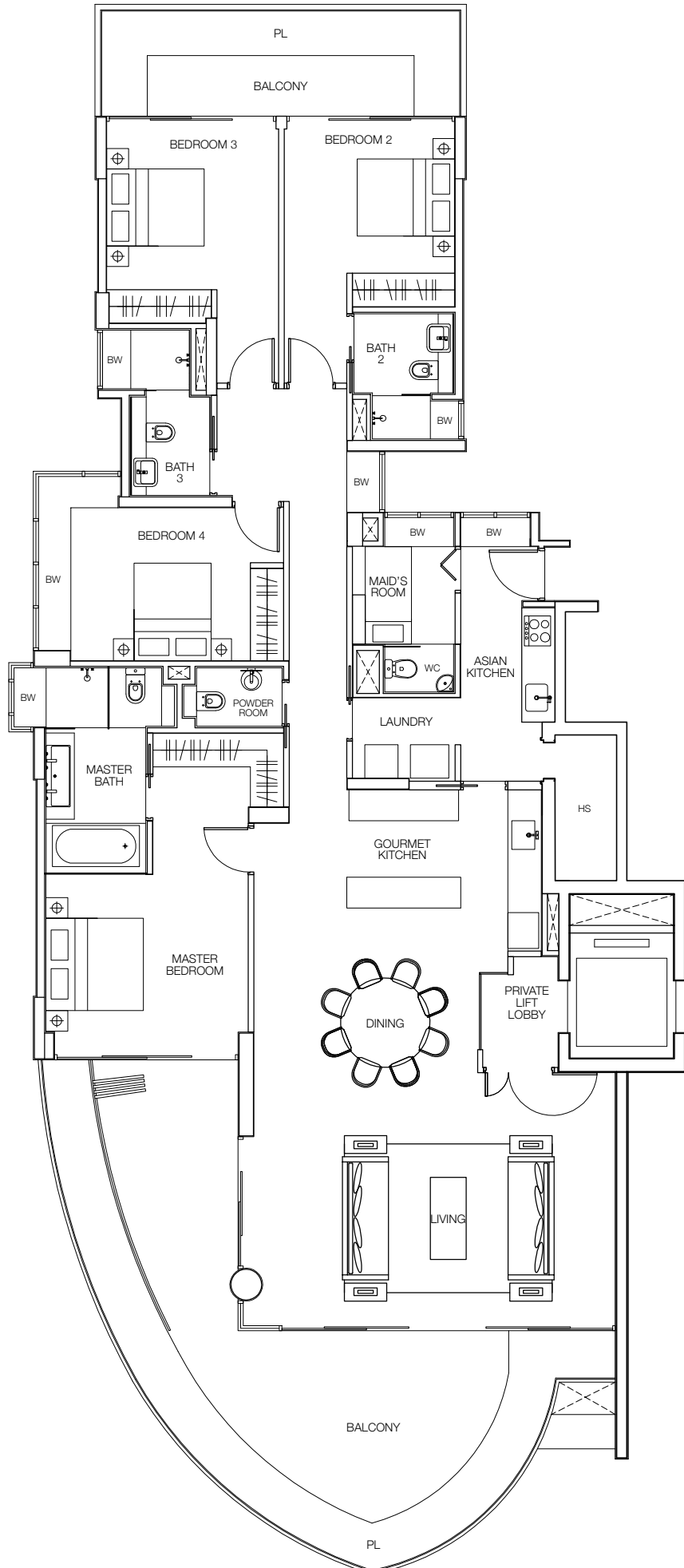
265 sq.m.
2,852 sq.ft.

57 Cove Way #02-07 to #07-07

59 Cove Way #02-08 to #07-08



Plans are not to scale and are subject to any amendment as may be approved by the relevant authorities. All floor areas are approximate and are subject to final survey.



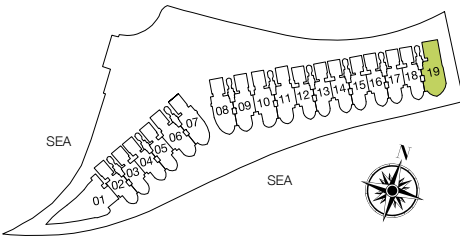
FOUR BEDROOM

Cg

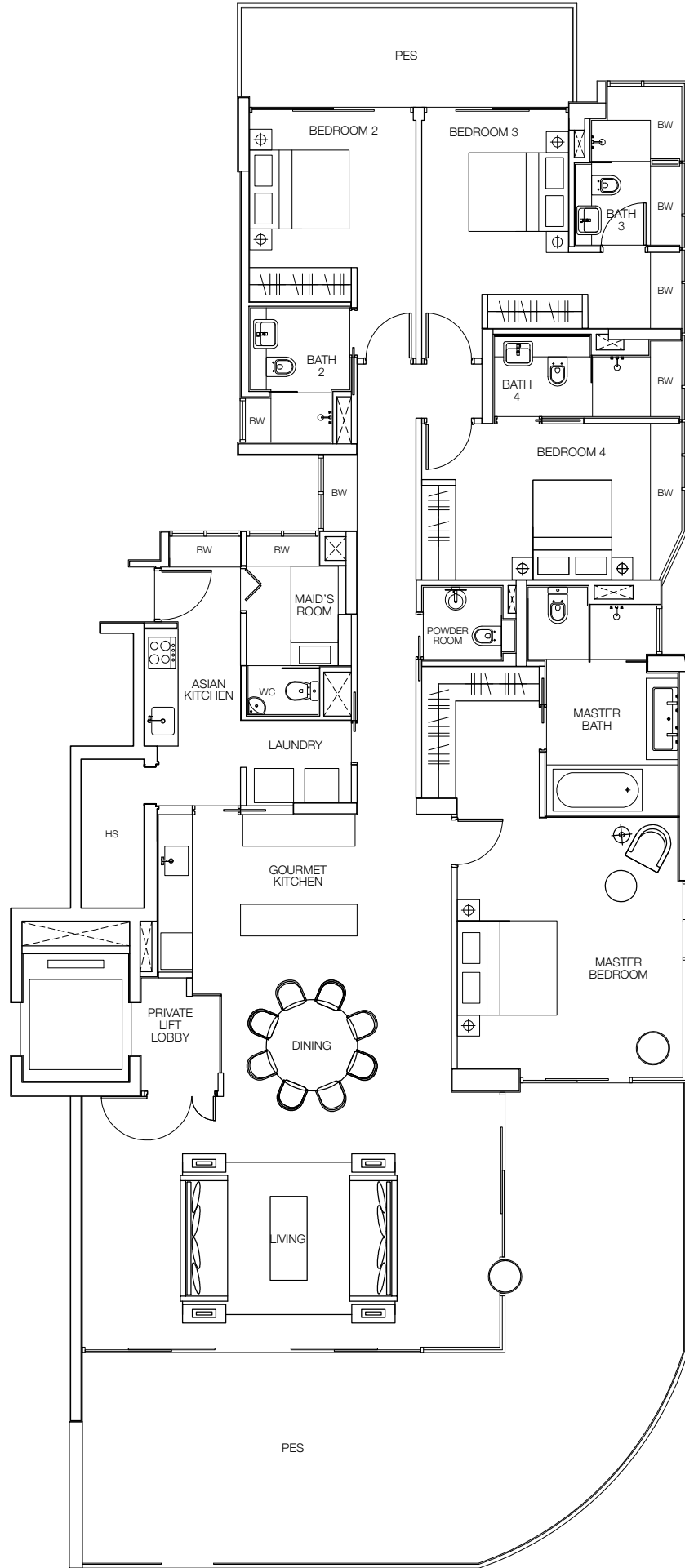
291 sq.m.
3,132 sq.ft.

Including PES of 72 sq.m.

59 Cove Way #01-19



Plans are not to scale and are subject to any amendment as may be approved by the relevant authorities. All floor areas are approximate and are subject to final survey.

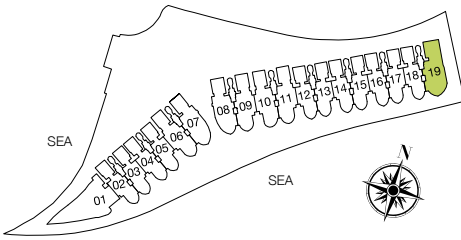


FOUR BEDROOM

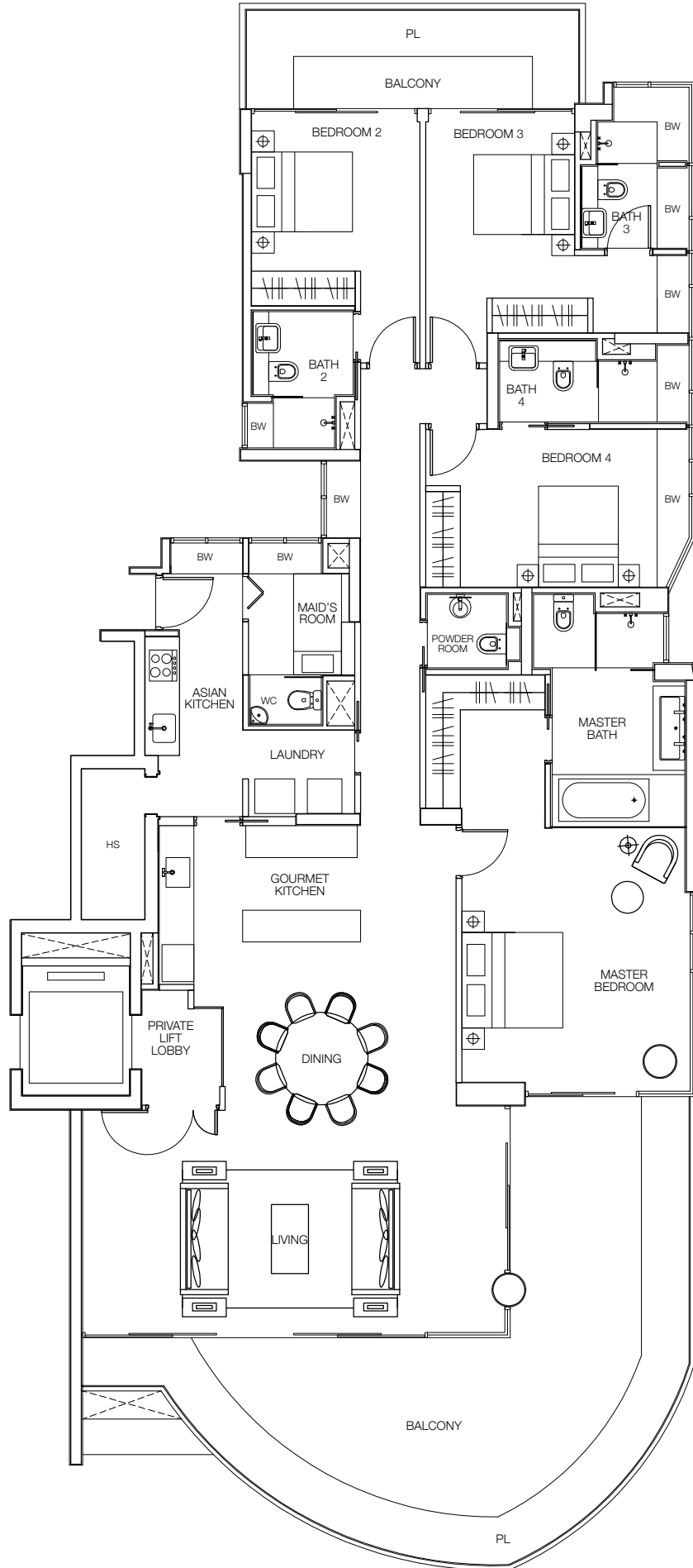
C

276 sq.m.
2,971 sq.ft.

59 Cove Way #02-19 to #07-19



Plans are not to scale and are subject to any amendment as may be approved by the relevant authorities. All floor areas are approximate and are subject to final survey.

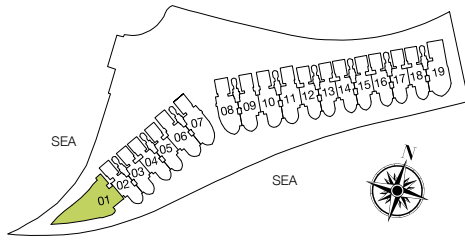


FOUR BEDROOM

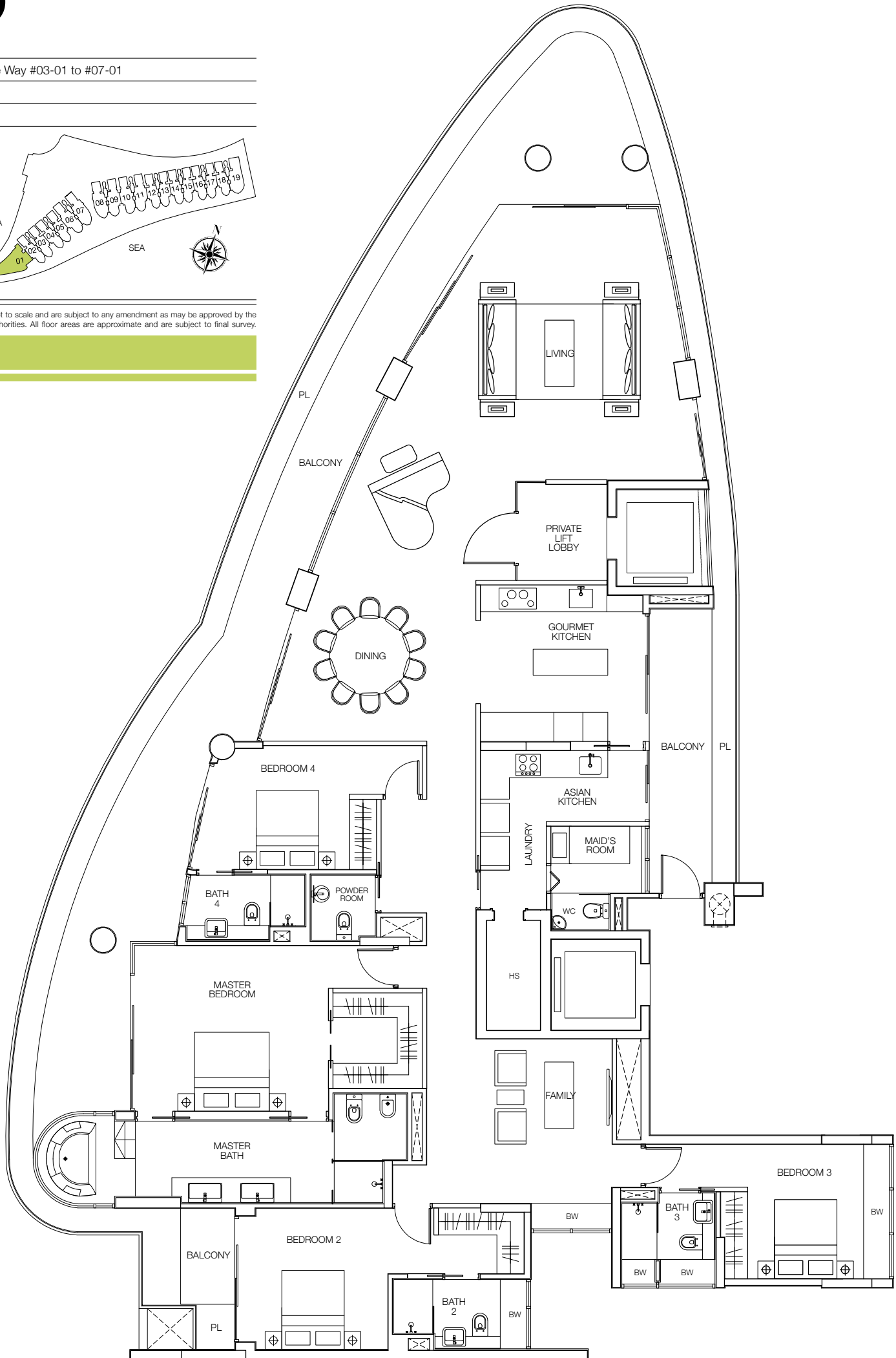
D

378 sq.m.
4,069 sq.ft.

57 Cove Way #03-01 to #07-01



Plans are not to scale and are subject to any amendment as may be approved by the relevant authorities. All floor areas are approximate and are subject to final survey.



PENTHOUSE

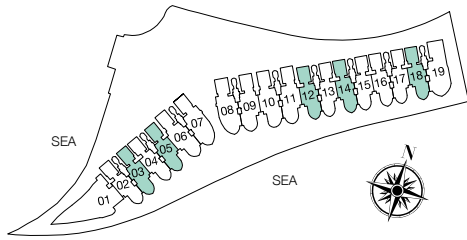
P1a

314 sq.m.
3,380 sq.ft.

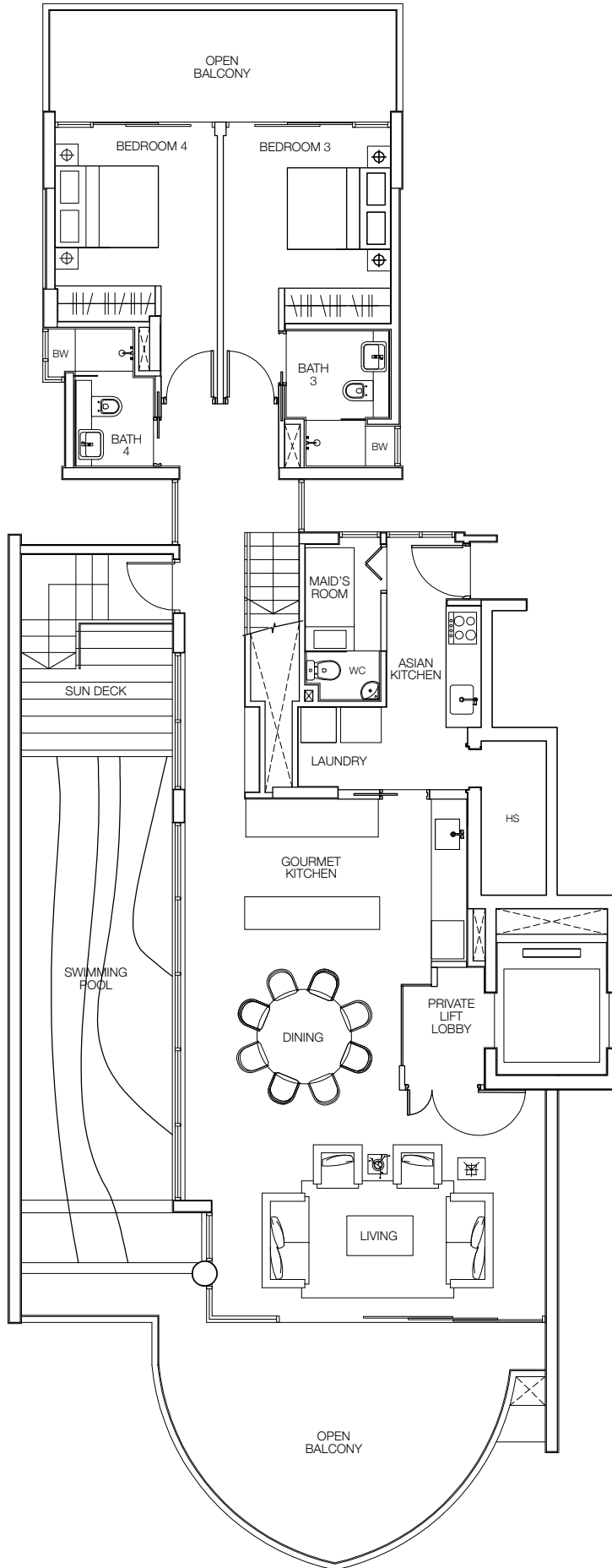
Including open balcony/pool/
outdoor landscape of 113 sq.m.

57 Cove Way #08-03, #08-05

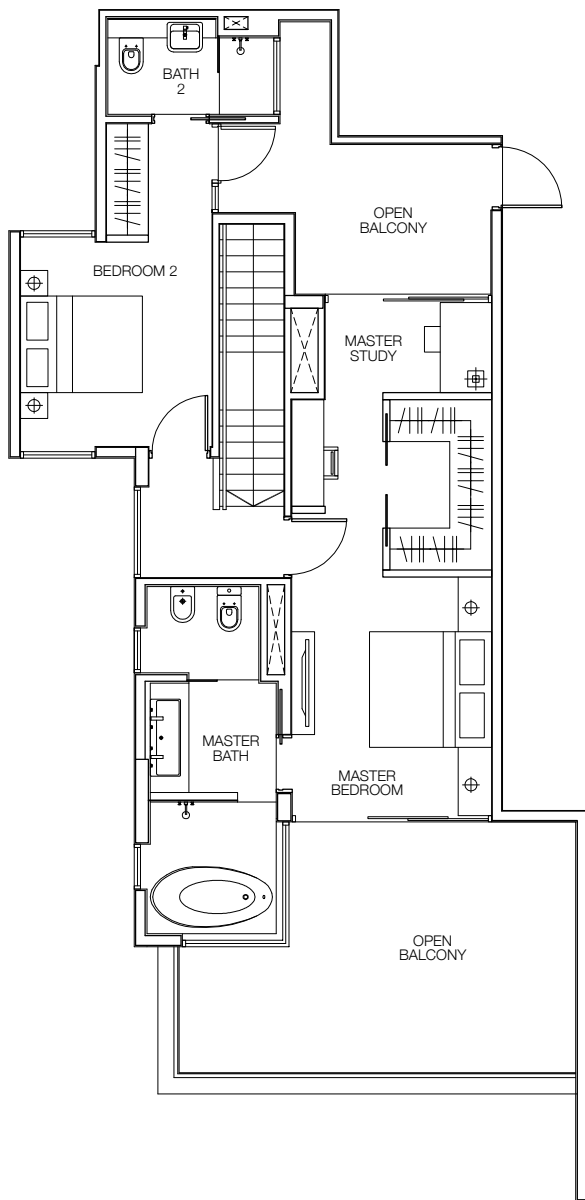
59 Cove Way #08-12, #08-14, #08-18



Plans are not to scale and are subject to any amendment as may be approved by the relevant authorities. All floor areas are approximate and are subject to final survey.



LOWER
PENTHOUSE



UPPER
PENTHOUSE

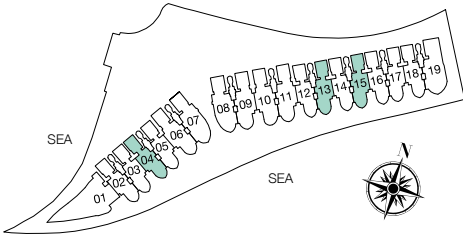
PENTHOUSE

P1b

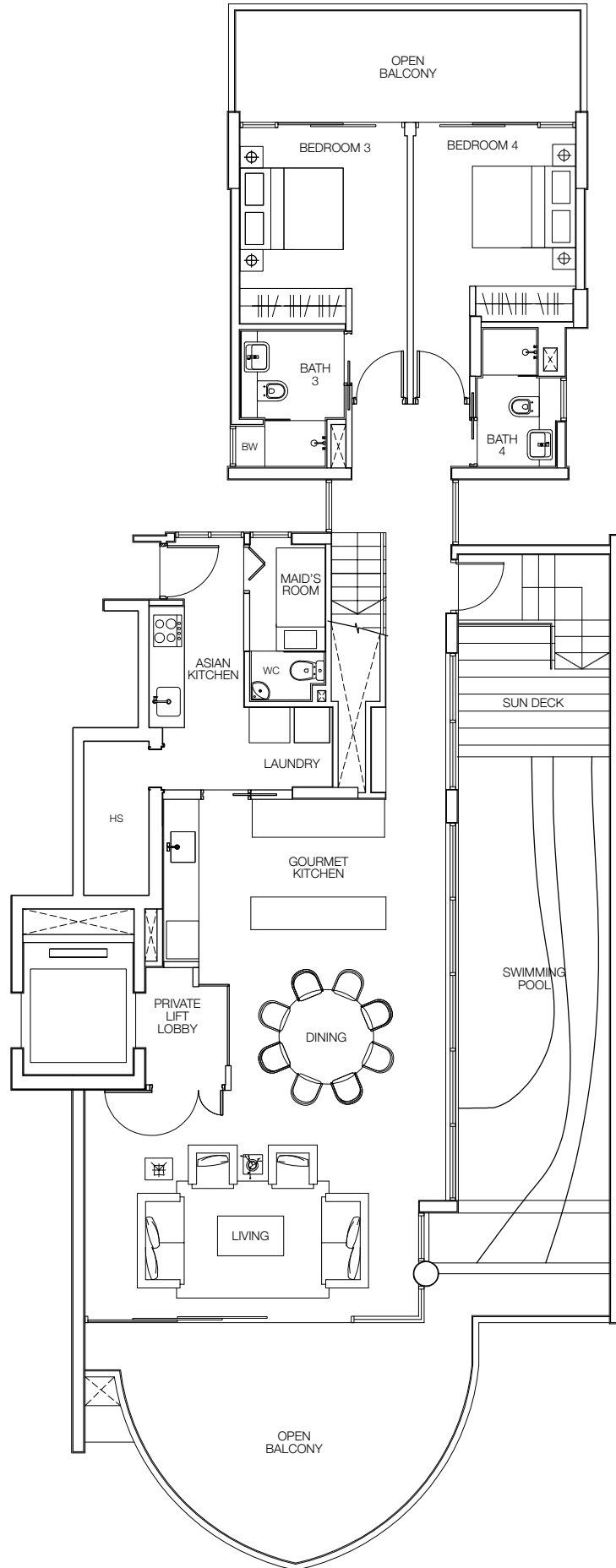
314 sq.m.
3,380 sq.ft.
Including open balcony/pool/
outdoor landscape of 113 sq.m.

57 Cove Way #08-04

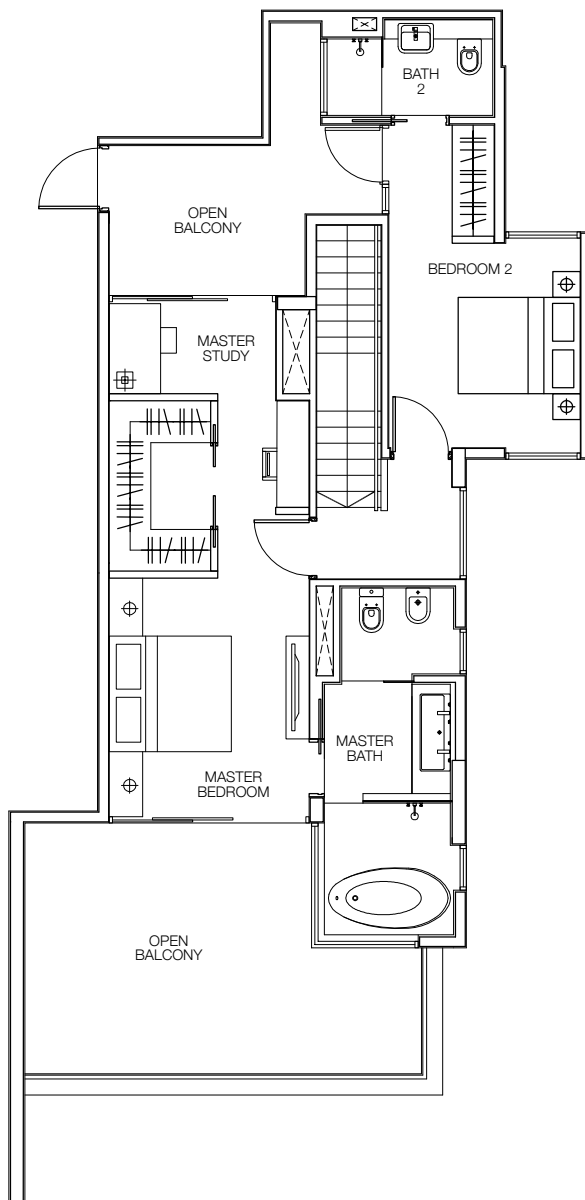
59 Cove Way #08-13, #08-15



Plans are not to scale and are subject to any amendment as may be approved by the relevant authorities. All floor areas are approximate and are subject to final survey.



LOWER
PENTHOUSE



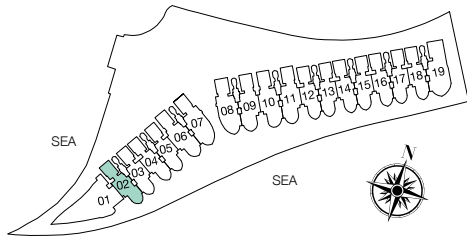
UPPER
PENTHOUSE

PENTHOUSE

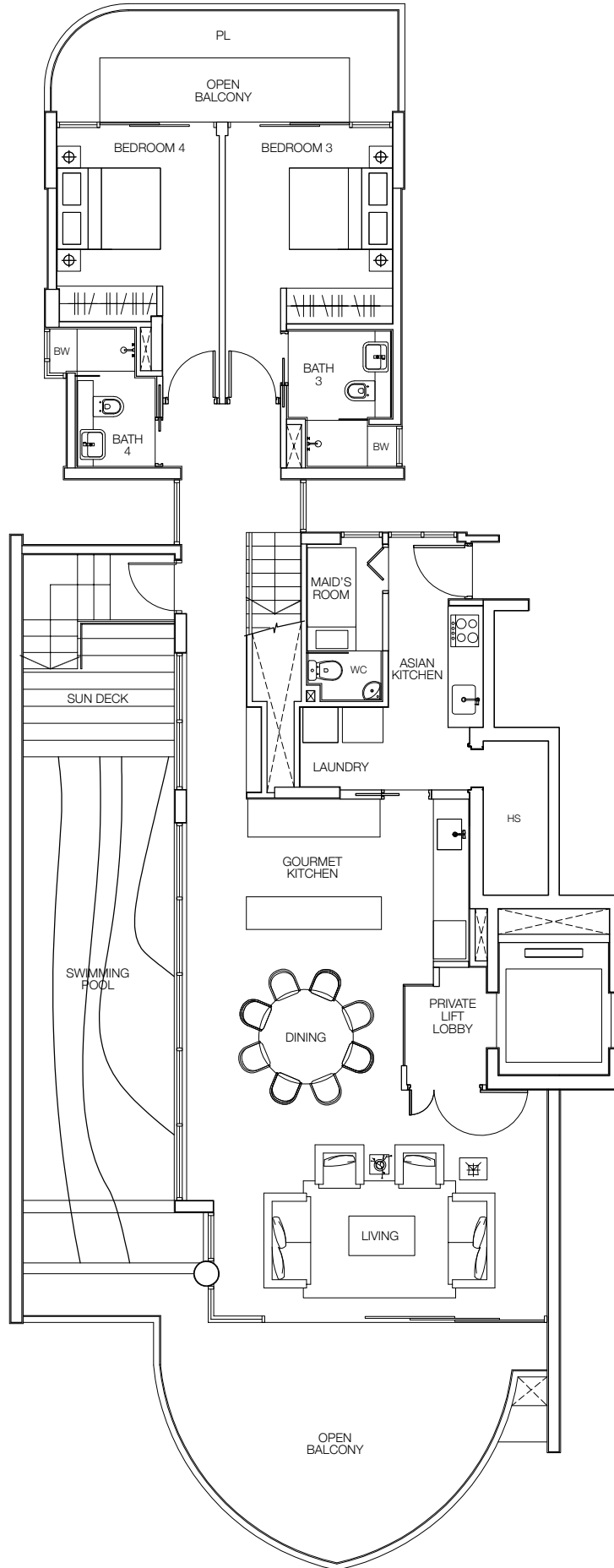
P1c

314 sq.m.
3,380 sq.ft.
Including open balcony/pool/
outdoor landscape of 105 sq.m.

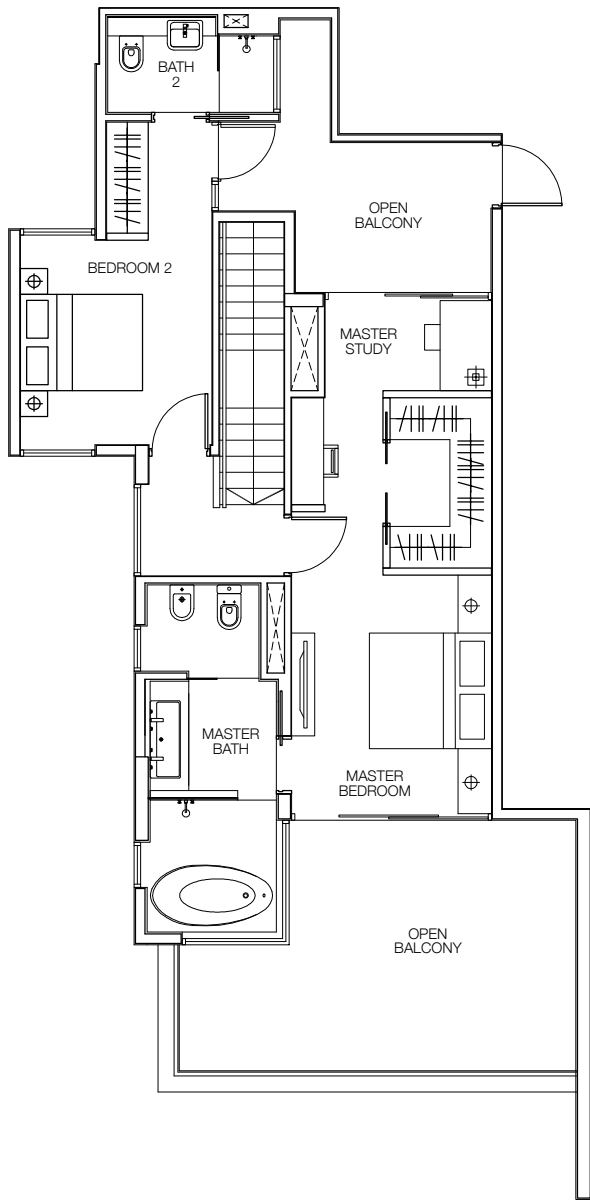
57 Cove Way #08-02



Plans are not to scale and are subject to any amendment as may be approved by the relevant authorities. All floor areas are approximate and are subject to final survey.



LOWER
PENTHOUSE



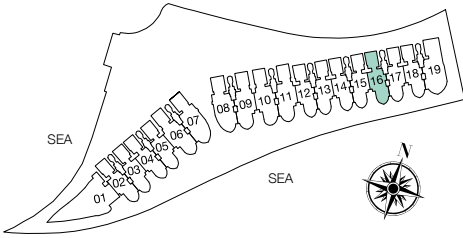
UPPER
PENTHOUSE

PENTHOUSE

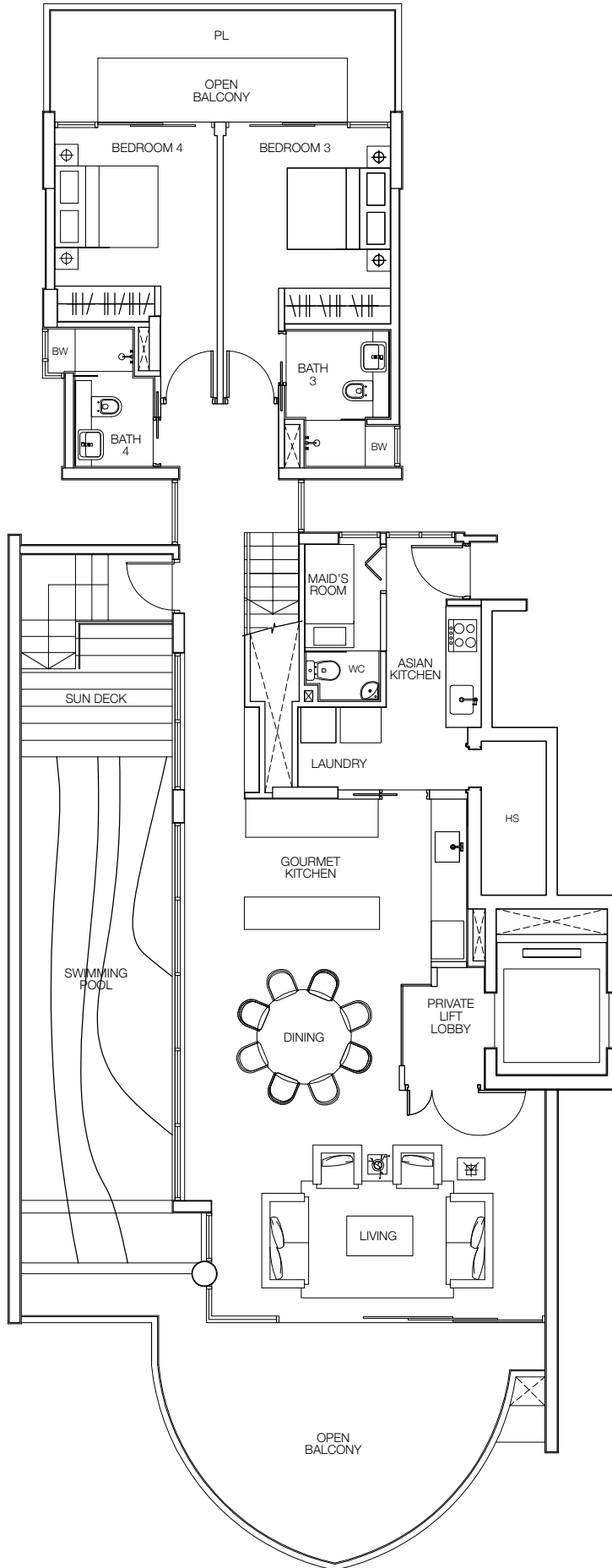
P1d

314 sq.m.
3,380 sq.ft.
Including open balcony/pool/
outdoor landscape of 105 sq.m.

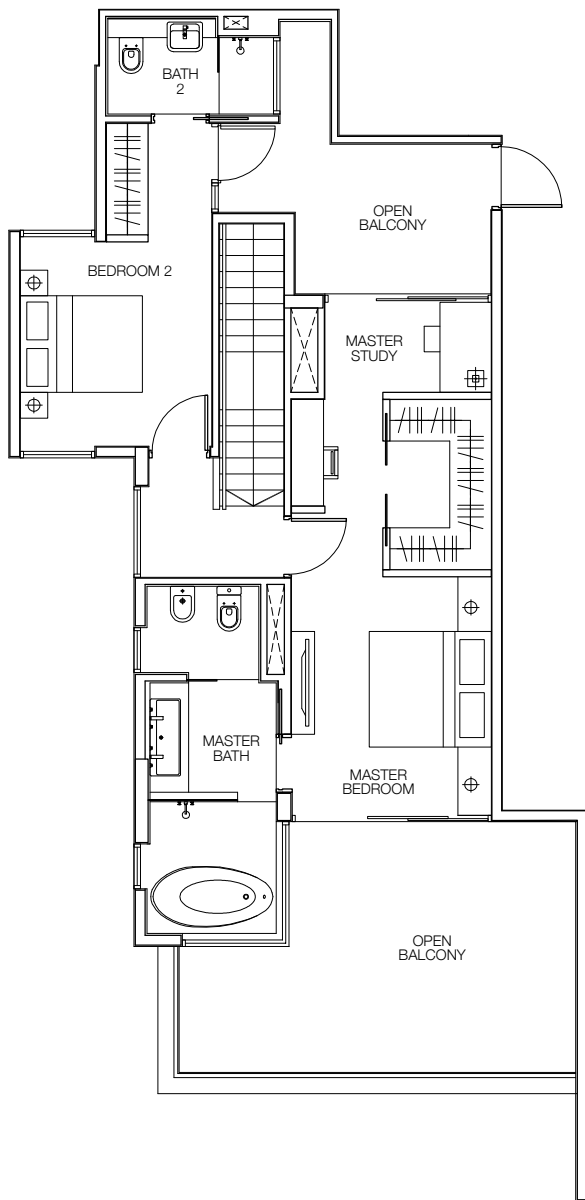
59 Cove Way #08-16



Plans are not to scale and are subject to any amendment as may be approved by the relevant authorities. All floor areas are approximate and are subject to final survey.



LOWER
PENTHOUSE



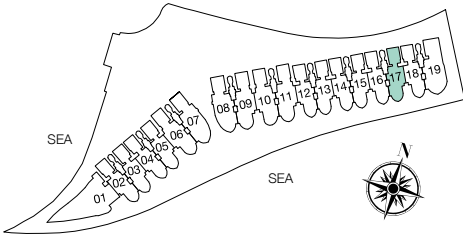
UPPER
PENTHOUSE

PENTHOUSE

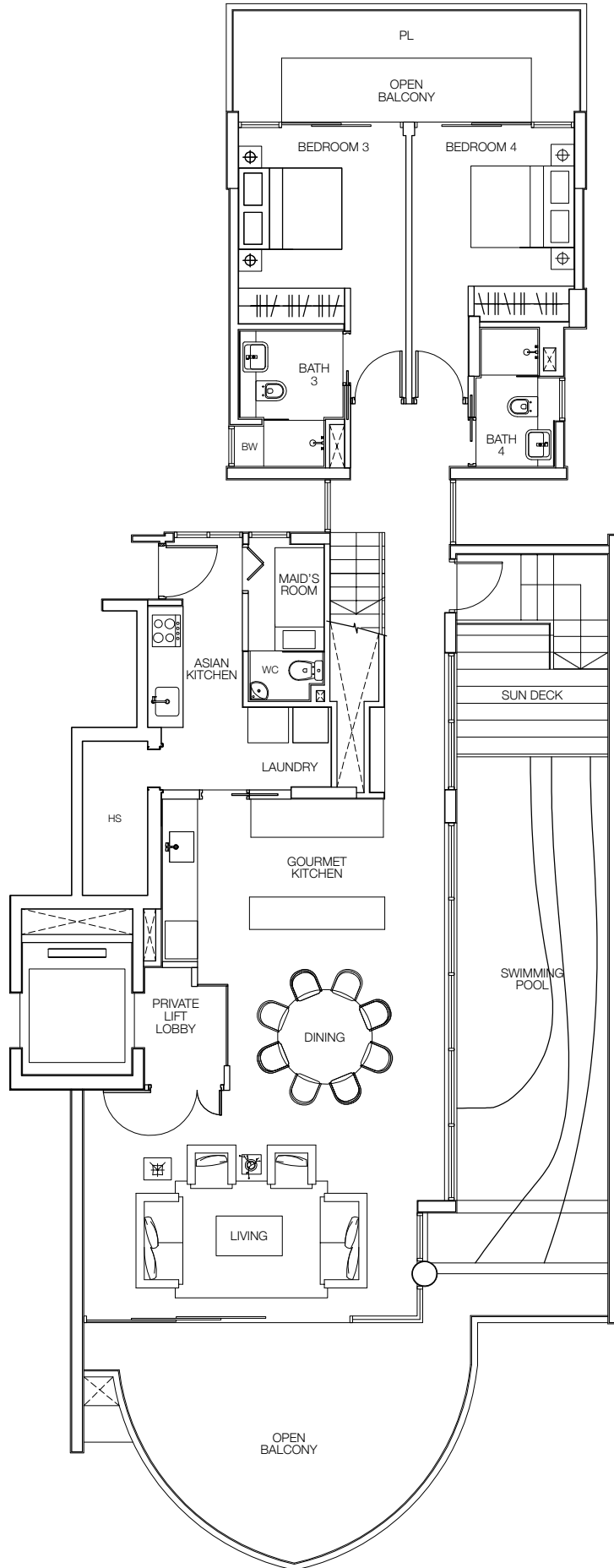
P1e

314 sq.m.
3,380 sq.ft.
Including open balcony/pool/
outdoor landscape of 105 sq.m.

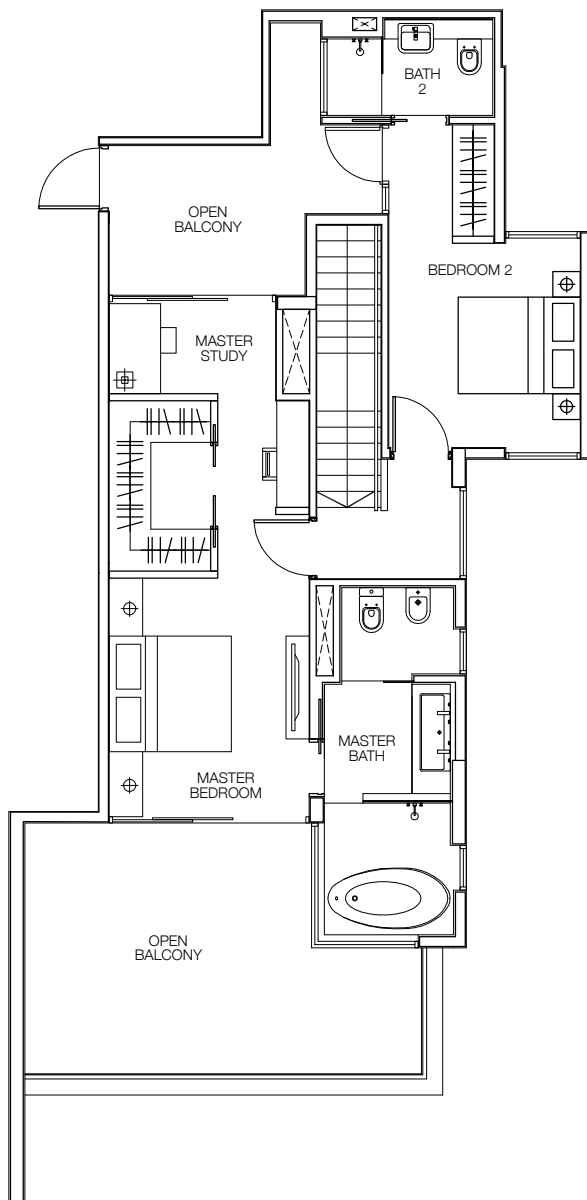
59 Cove Way #08-17



Plans are not to scale and are subject to any amendment as may be approved by the relevant authorities. All floor areas are approximate and are subject to final survey.



LOWER
PENTHOUSE



UPPER
PENTHOUSE

PENTHOUSE

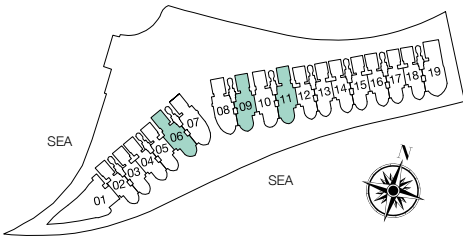
P2a

384 sq.m.
4,133 sq.ft.

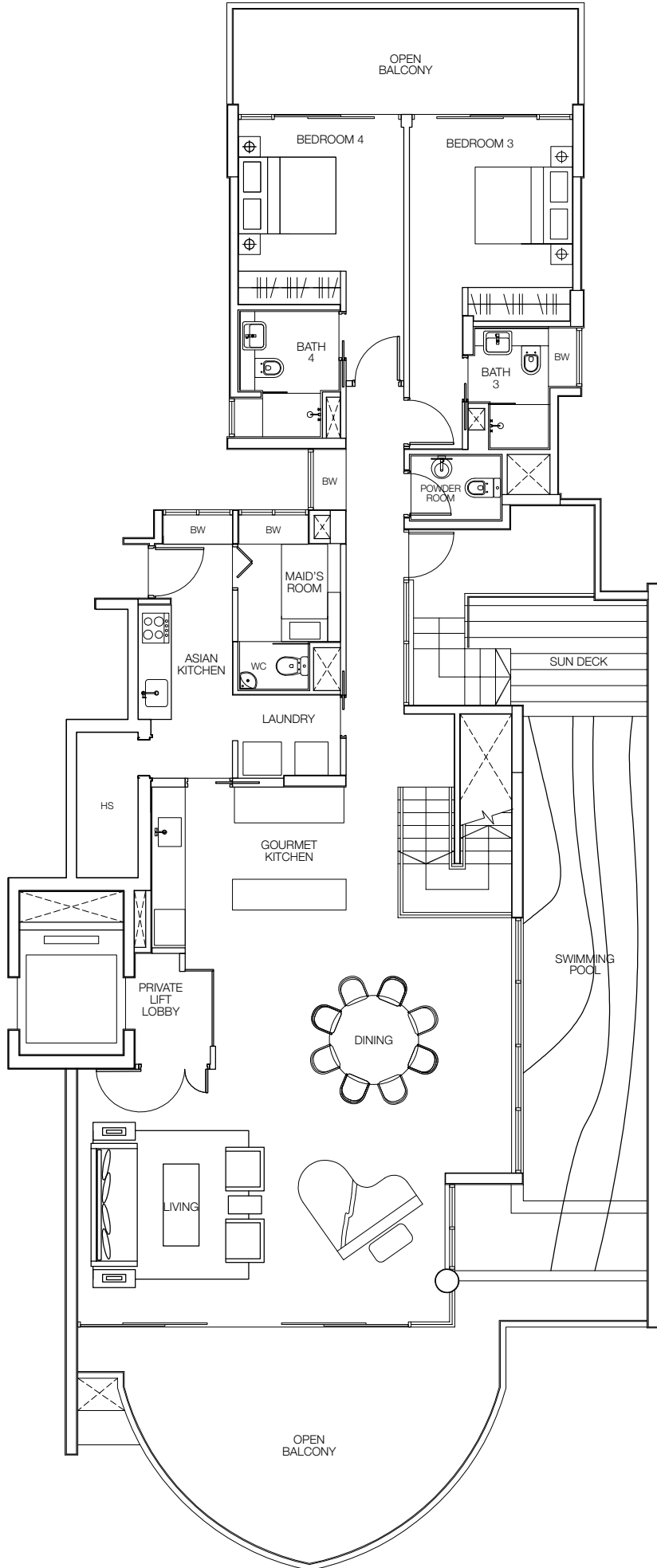
Including open balcony/pool/
outdoor landscape of 131 sq.m.
and strata void of 4 sq.m.

57 Cove Way #08-06

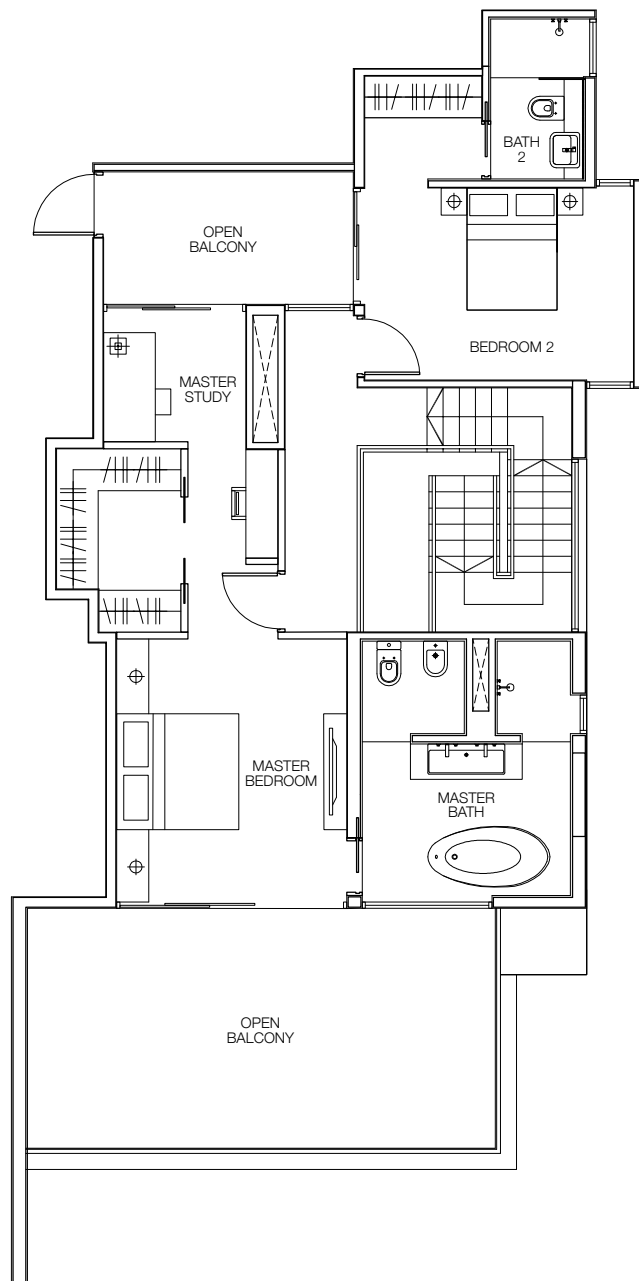
59 Cove Way #08-09, #08-11



Plans are not to scale and are subject to any amendment as may be approved by the relevant authorities. All floor areas are approximate and are subject to final survey.



LOWER
PENTHOUSE



UPPER
PENTHOUSE

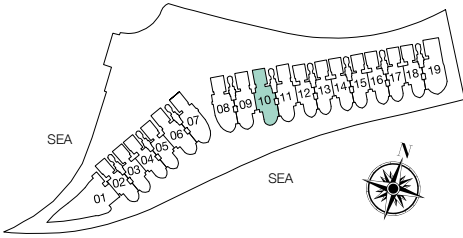
PENTHOUSE

P2b

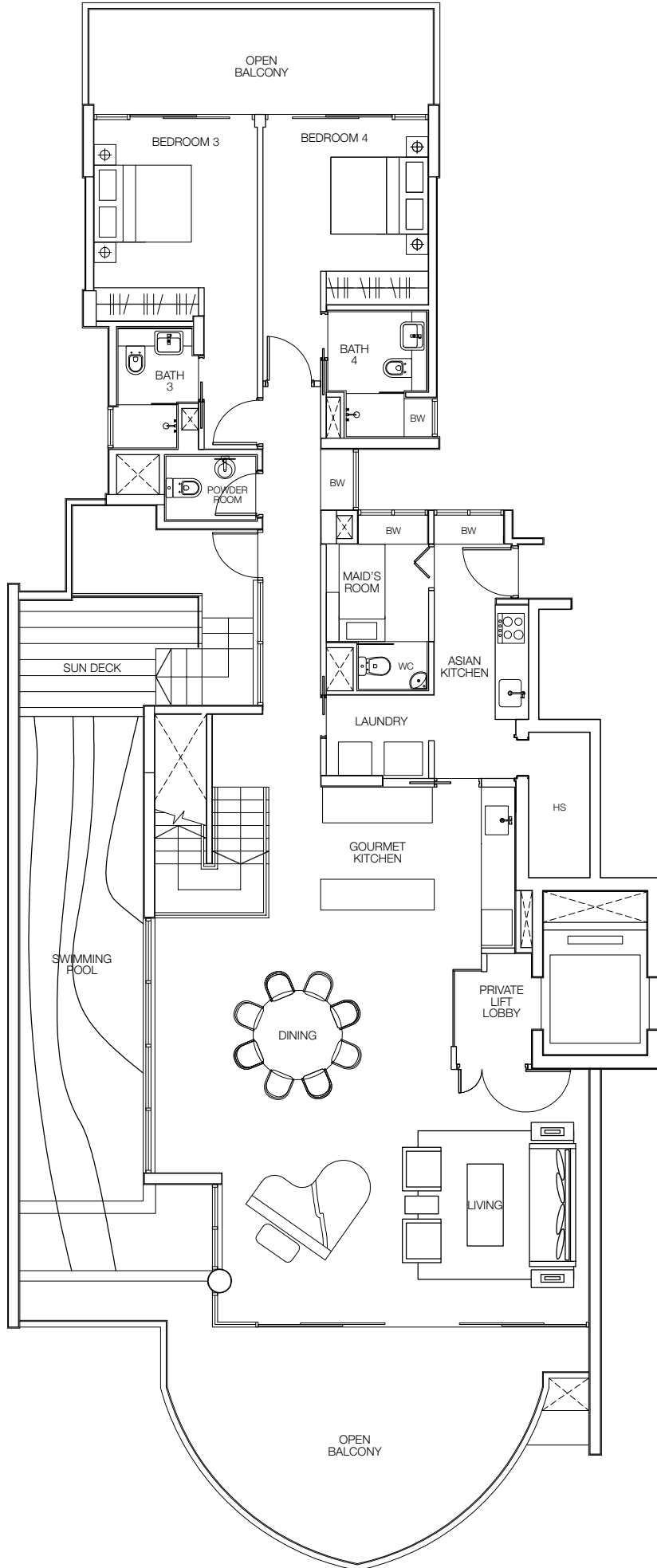
383 sq.m.
4,123 sq.ft.

Including open balcony/pool/
outdoor landscape of 130 sq.m.
and strata void of 4 sq.m.

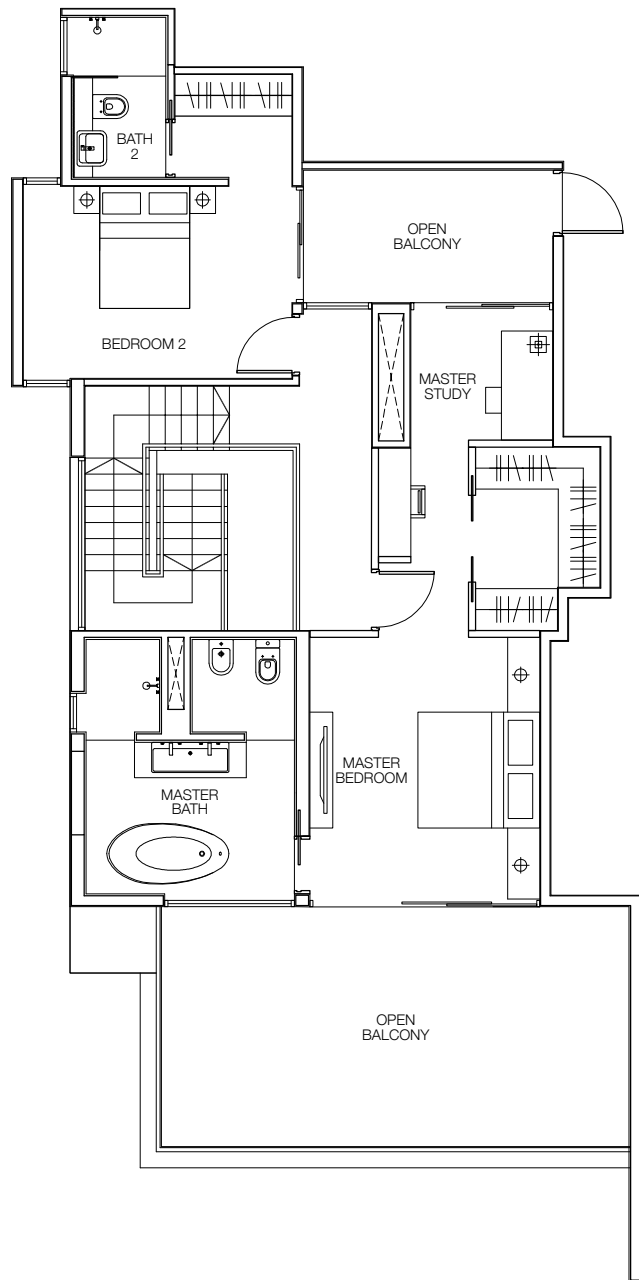
59 Cove Way #08-10



Plans are not to scale and are subject to any amendment as may be approved by the relevant authorities. All floor areas are approximate and are subject to final survey.



LOWER
PENTHOUSE



UPPER
PENTHOUSE

PENTHOUSE

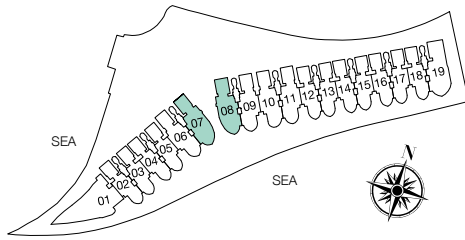
P2c

394 sq.m.
4,241 sq.ft.

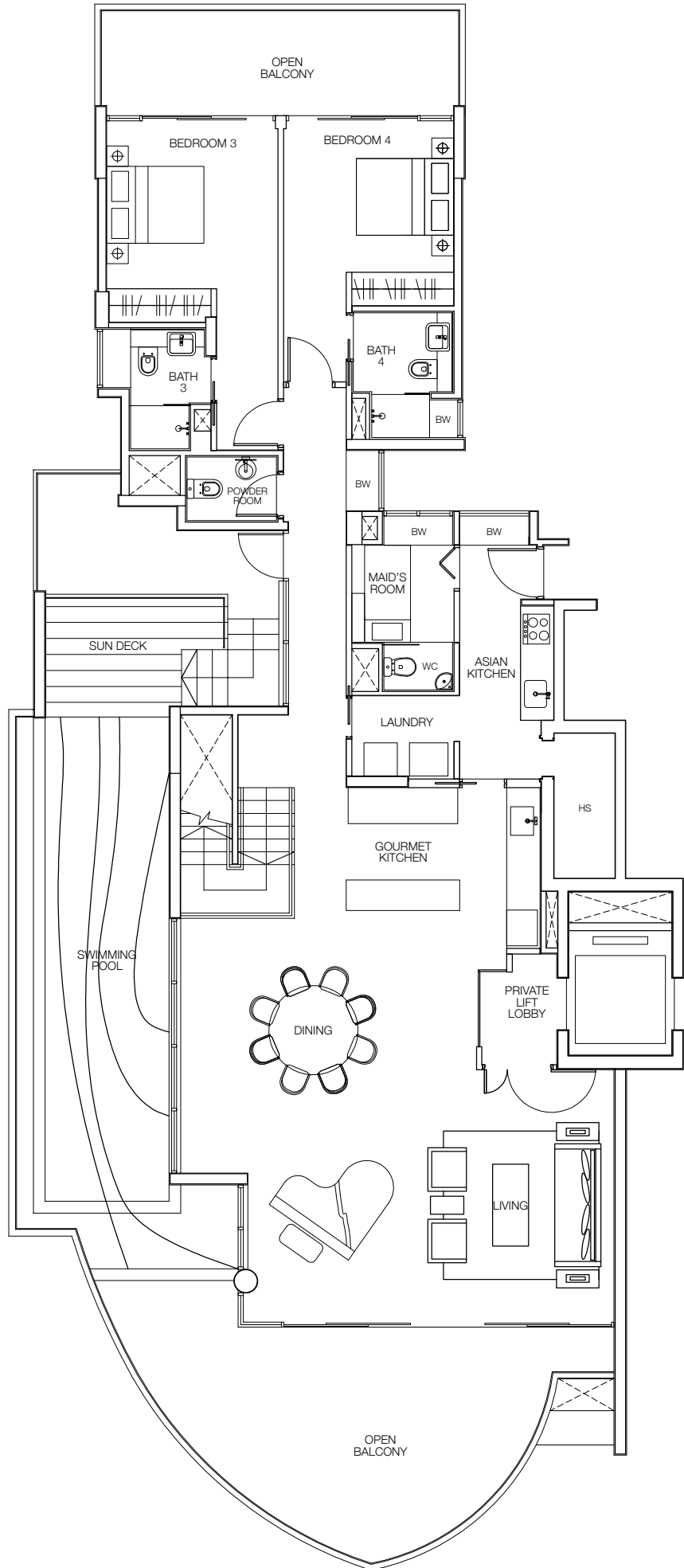
Including open balcony/pool/
outdoor landscape of 140 sq.m.
and strata void of 4 sq.m.

57 Cove Way #08-07

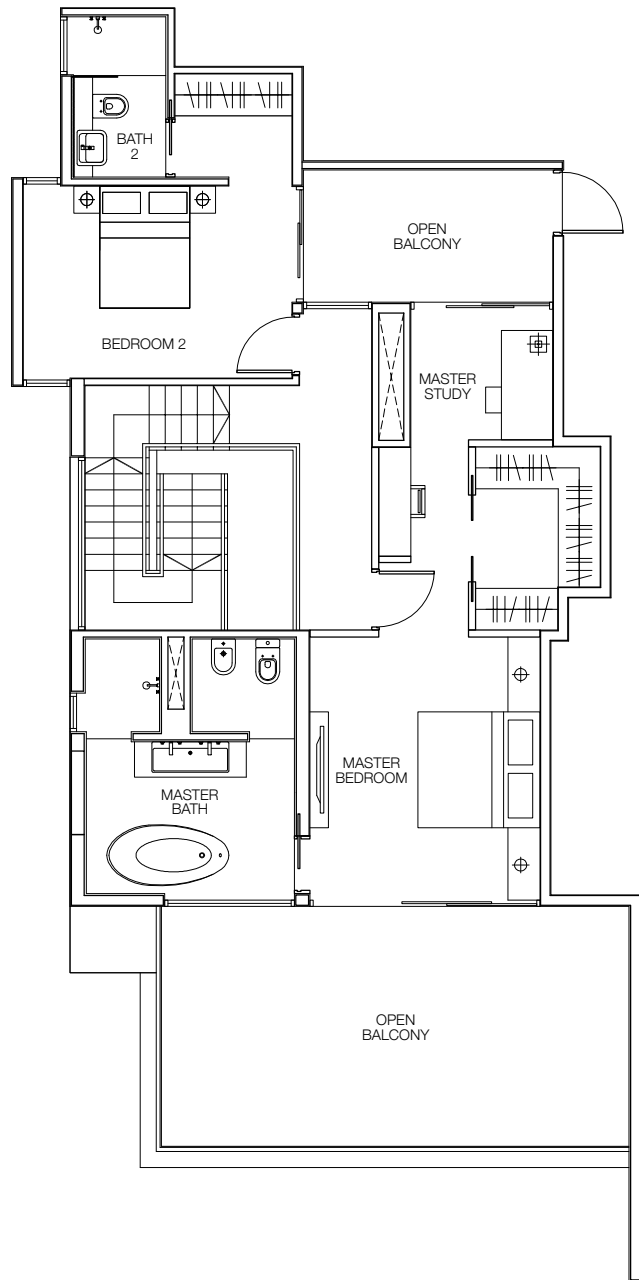
59 Cove Way #08-08



Plans are not to scale and are subject to any amendment as may be approved by the relevant authorities. All floor areas are approximate and are subject to final survey.



LOWER
PENTHOUSE



UPPER
PENTHOUSE

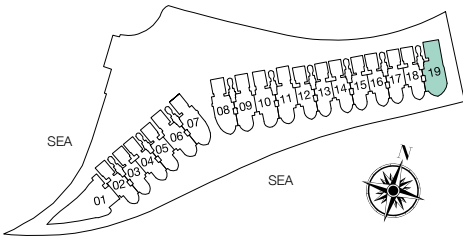
PENTHOUSE

P3

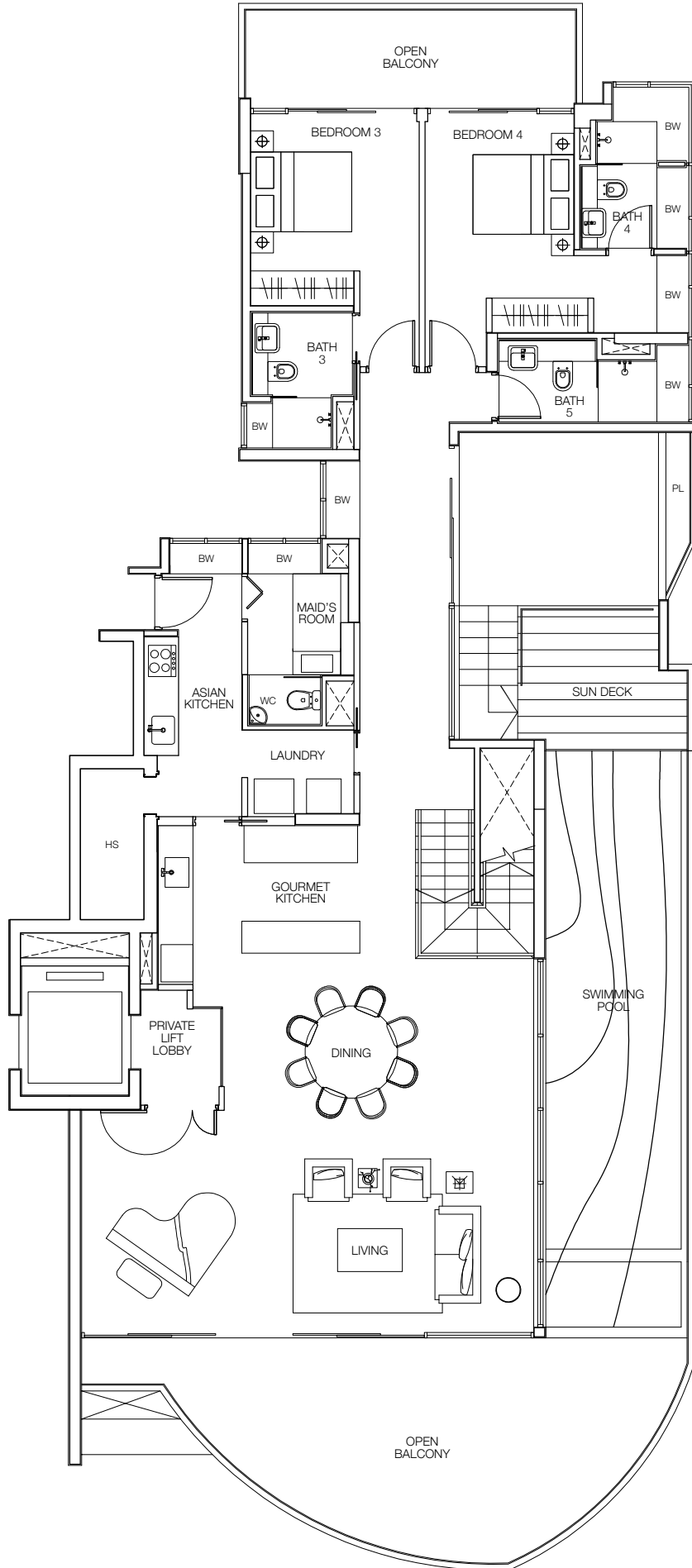
395 sq.m.
4,252 sq.ft.

Including open balcony/pool/
outdoor landscape of 134 sq.m.
and strata void of 4 sq.m.

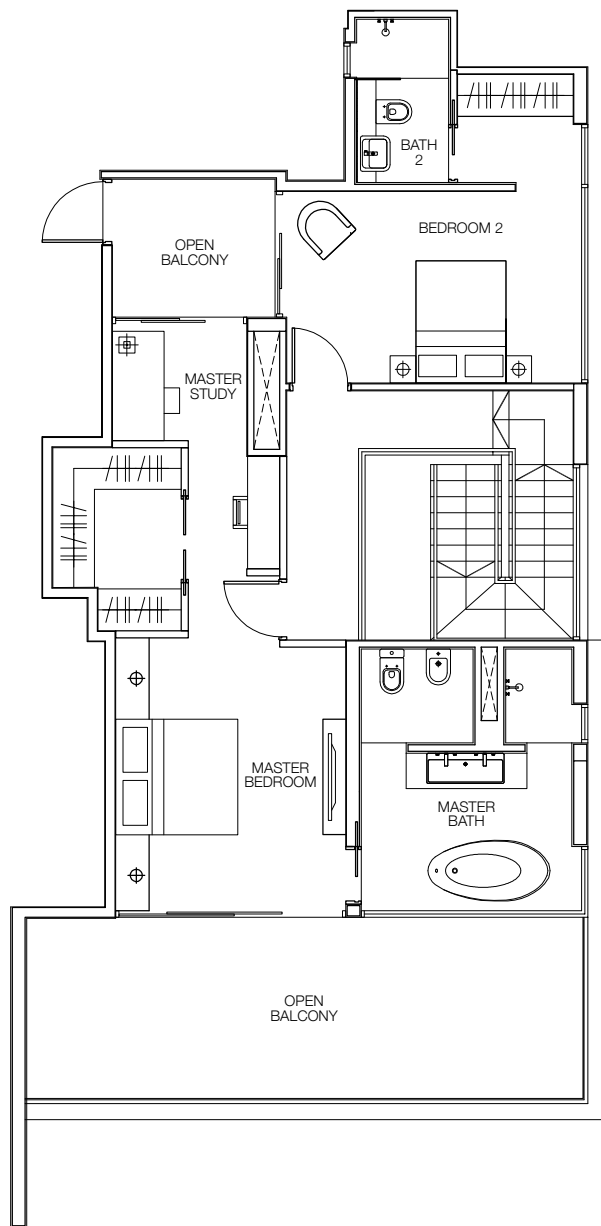
59 Cove Way #08-19



Plans are not to scale and are subject to any amendment as may be approved by the relevant authorities. All floor areas are approximate and are subject to final survey.



LOWER
PENTHOUSE



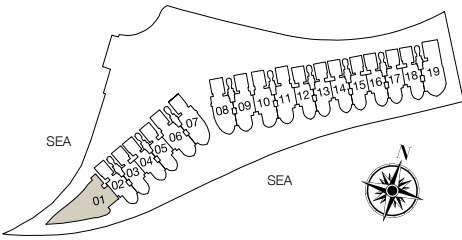
UPPER
PENTHOUSE

SV1

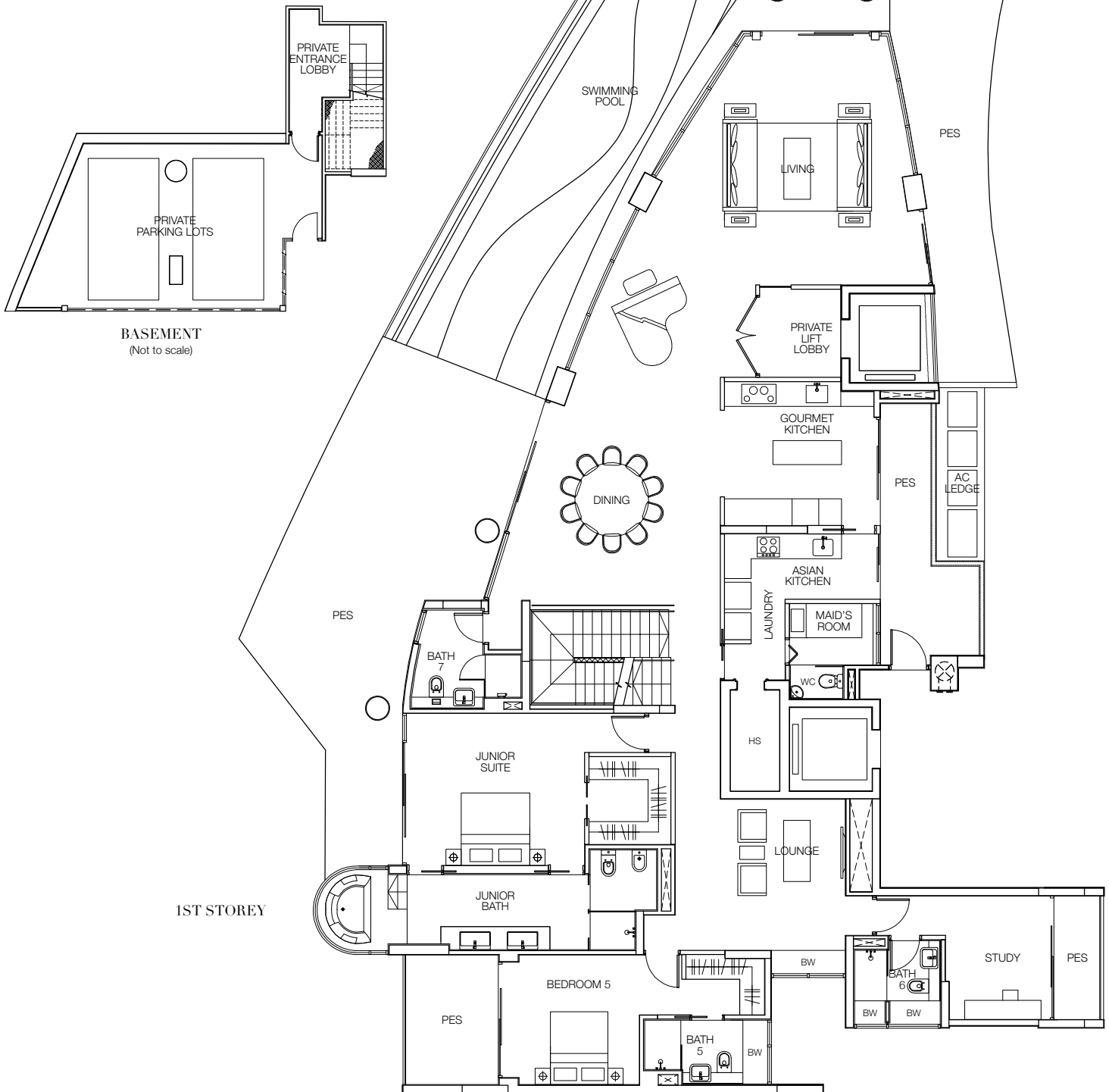
897 sq.m.
9,655 sq.ft.

Including private carpark of 57 sq.m., pool/pool deck of 215 sq.m., PES of 25 sq.m. and strata void of 81 sq.m.

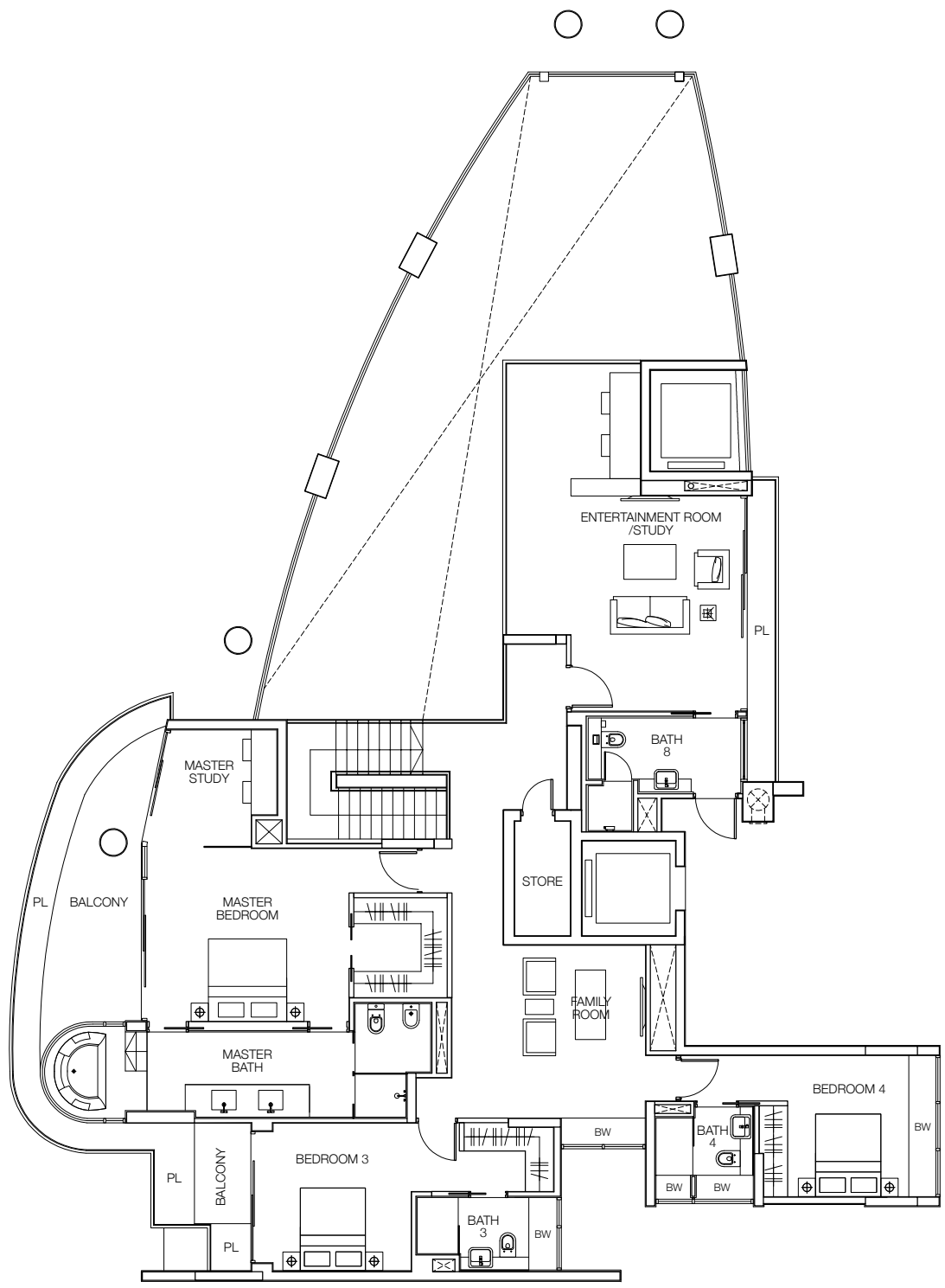
57 Cove Way #01-01



Plans are not to scale and are subject to any amendment as may be approved by the relevant authorities. All floor areas are approximate and are subject to final survey.



2ND STOREY

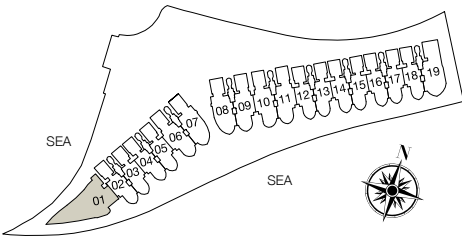


SV2

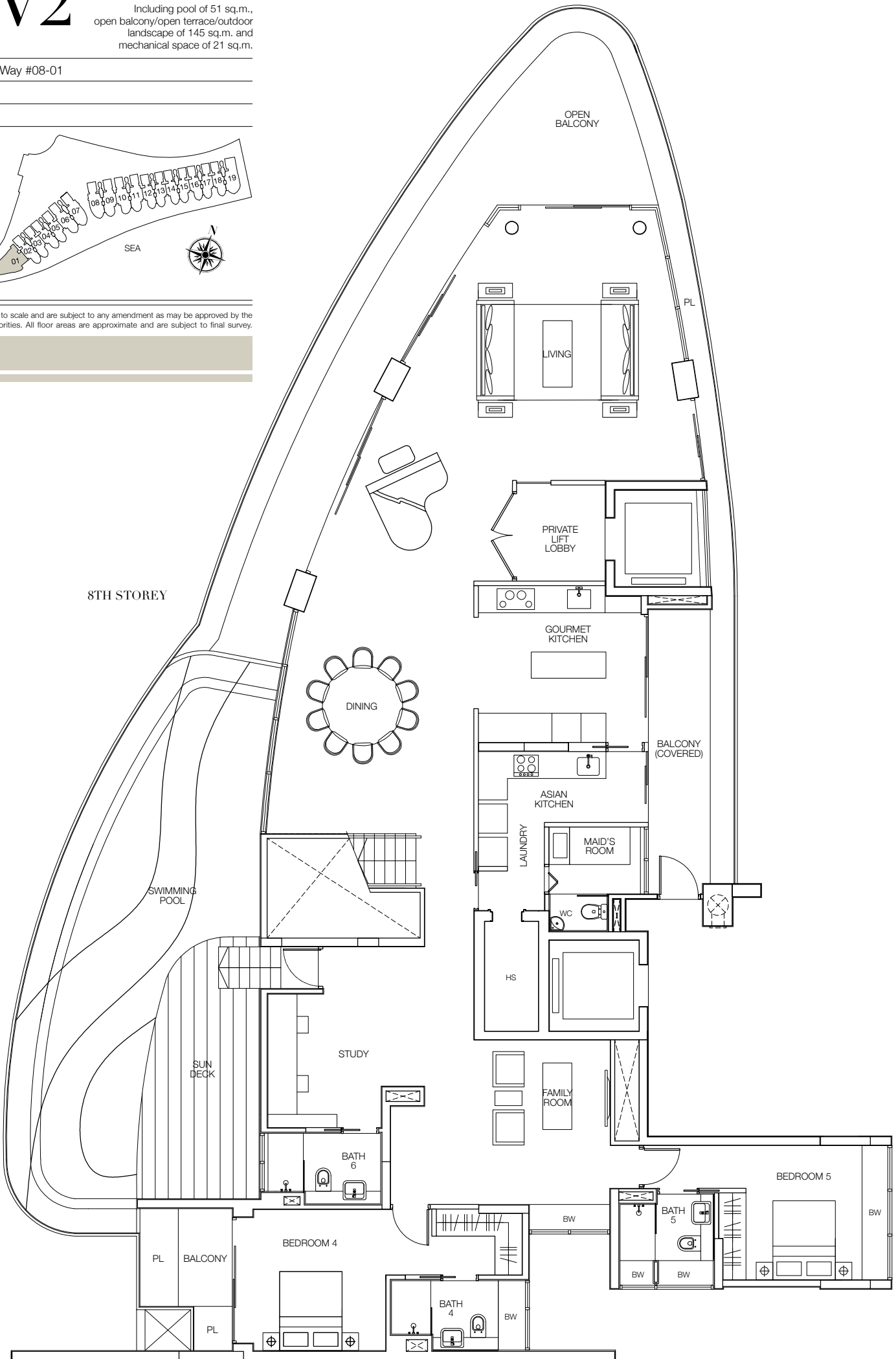
616 sq.m.
6,631 sq.ft.

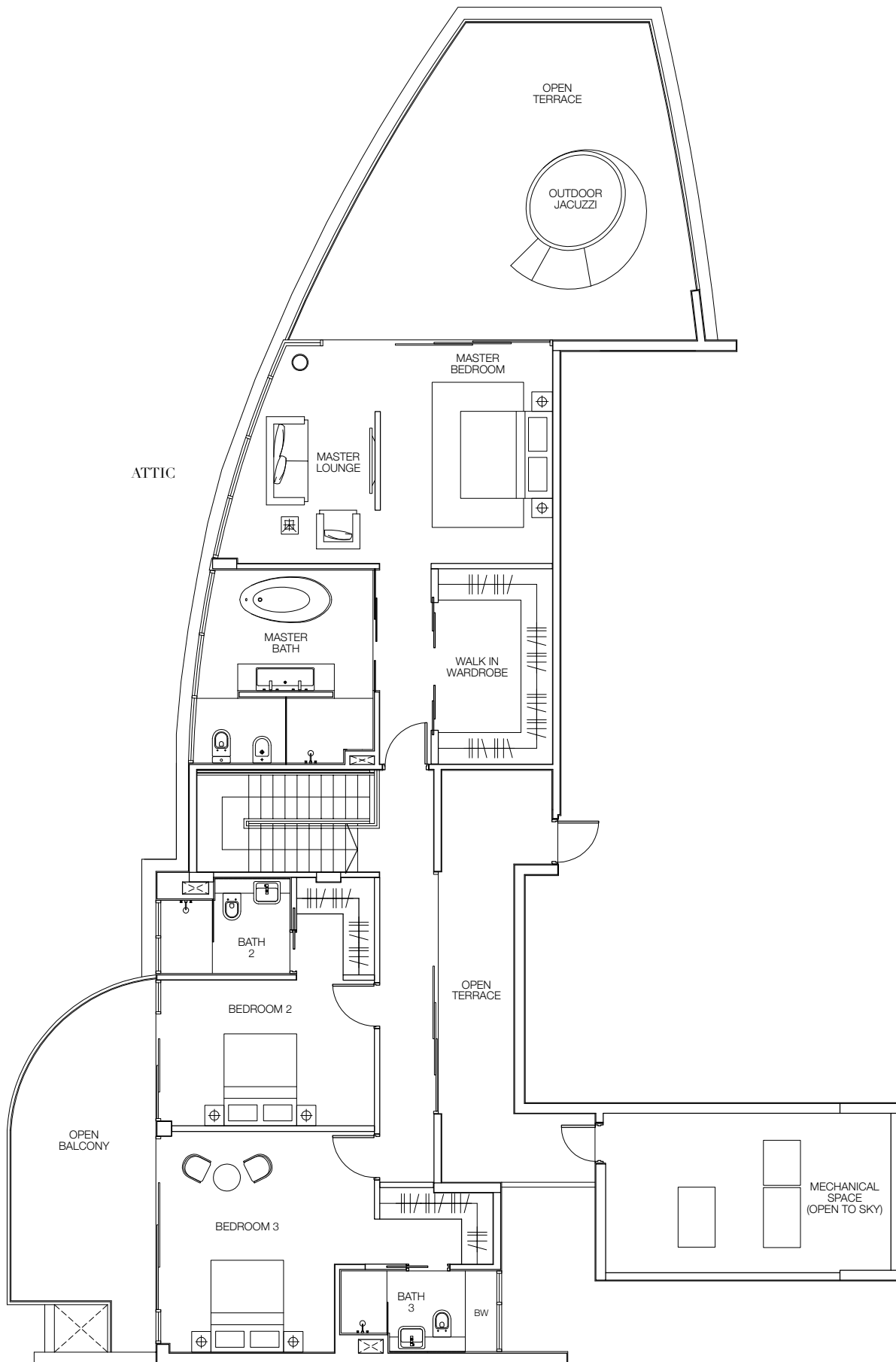
Including pool of 51 sq.m.,
open balcony/open terrace/outdoor
landscape of 145 sq.m. and
mechanical space of 21 sq.m.

57 Cove Way #08-01



Plans are not to scale and are subject to any amendment as may be approved by the relevant authorities. All floor areas are approximate and are subject to final survey.





SPECIFICATIONS

INTERIOR FEATURES AND PROVISIONS*

Living & Dining

- Natural marble tiles with marble skirting
- Ducted air-conditioning system

Master Bedroom

- Timber strip flooring with timber skirting
- Ducted air-conditioning system
- Built-in wardrobe

Master Bathroom

- Marble and/or granite wall and floor tiles
- Marble and/or granite vanity top with wash basin and mixer
- Long bath with bath mixer and hand shower
- Pedestal water closet
- Glass shower screen complete with shower mixer, rain shower and hand shower set
- Mirror
- Towel rail and paper holder

Other Bedrooms

- Timber strip flooring with timber skirting
- Wall-mounted air-conditioning system
- Built-in wardrobe

Bathroom 2, 3, 4, 5, & 6

- Marble and/or granite wall and floor tiles
- Marble and/or granite vanity top with wash basin and mixer
- Wall-hung water closet
- Glass shower screen with mixer and hand shower set
- Mirror
- Towel rail and paper holder

Gourmet Kitchen

- Natural marble floor tiles
- Ducted air-conditioning system
- High and low kitchen cabinets with solid surface worktops complete with built-in oven, built-in steam oven, coffee maker and single bowl sink
- Integrated refrigerator
- Wine Cellar

Wet Kitchen

- Homogeneous and/or ceramic floor tiles
- High and low kitchen cabinets with solid surface worktops complete with cooker hood, gas hob, single bowl sink
- Dishwasher
- Standalone Refrigerator
- Laundry washer and tumble dryer

Additional Features

- Dimming switches for Living, Dining, Junior Suite and Master Bedroom
- Audio/Video Intercom System
- Security access control to basement lift lobbies

Additional Features For Sky Villa, Sea Villa, Penthouses and Type D apartments

- Ducted air-conditioning to all bedrooms
- Jacuzzi bath tub in Master Bath and Junior Bath for Sea Villa and Type D apartments
- Outdoor Jacuzzi tub for Sky Villa only
- Bidet with mixer in Master Bathroom
- Lap pool with spa jets for Sky Villa, Sea Villa and Penthouses

*Only main provisions are highlighted here

A JOINT DEVELOPMENT BY:



SALES ENQUIRIES (65) 6276 8998
EMAIL enquiries@seascape.com.sg
WEBSITE www.seascape.com.sg

Developer: Seaview (Sentosa) Pte Ltd · Tenure of Land: 99 years leasehold from 9 June 2007 · Location: Lot 2143P Mk 34 Cove Way · BP Approval Date: 7 January 2008
Building Plan No.: A1252-00427-2007-BP01, BP Approval Date: 12 September 2008 Building Plan No.: A1252-00427-2007-BP02, BP Approval Date: 25 November 2009
Building Plan No.: A1252-00427-2007-BP03 · Developer's License: C0353 · Expected Date of TOP: 31 Dec 2012 · Expected Date of Legal Completion: 31 Dec 2015

All art renderings contained in this brochure are artist's impression only. The Developer reserves the right to modify any part or parts of the building, development and/or any unit prior to completion as directed or approved by the architects and/or the relevant authorities. While every reasonable care has been taken in preparing this brochure, the Developer cannot be held responsible for any inaccuracy in its contents. All plans, internal layouts, interior furniture layouts, information and specifications are subject to changes and cannot form part of an offer or a representation. All areas are approximate and subject to final survey.



BCA GREEN MARK

