

enchanté



At Victory Land, we develop well-designed 'homes'
(not just mere houses) for our discerning clientele through
our relentless pursuit of elegance and simplicity.

“Elegance is not being noticed,
it’s about being remembered.”

- Giorgio Armani

“Simplicity is the
ultimate sophistication.”

- Lenoardo da Vinci



Welcome

enchanté


your key to access the bliss of
enchanting life.

An abode where exuberance and zest for life are
ignited. At **enchanté**, elegance comes as a way of
life, and never as an afterthought.



An oasis
of serenity.

Your place of peace - a refuge from the lights and sounds of life. Tucked within the quiet confines of coveted District 11, **enchanté**, on Evelyn Road is your exclusive 25-unit, 16 storey dream abode come to life.



Realise the
enchanting
possibilities at
enchanté

An intimate escape nestled
in the heart of the city.

Retreat and unwind.
Your private haven - an escape from the world.
Isolate from the lights and sound, and
rejuvenate in the warm embrace of your home.

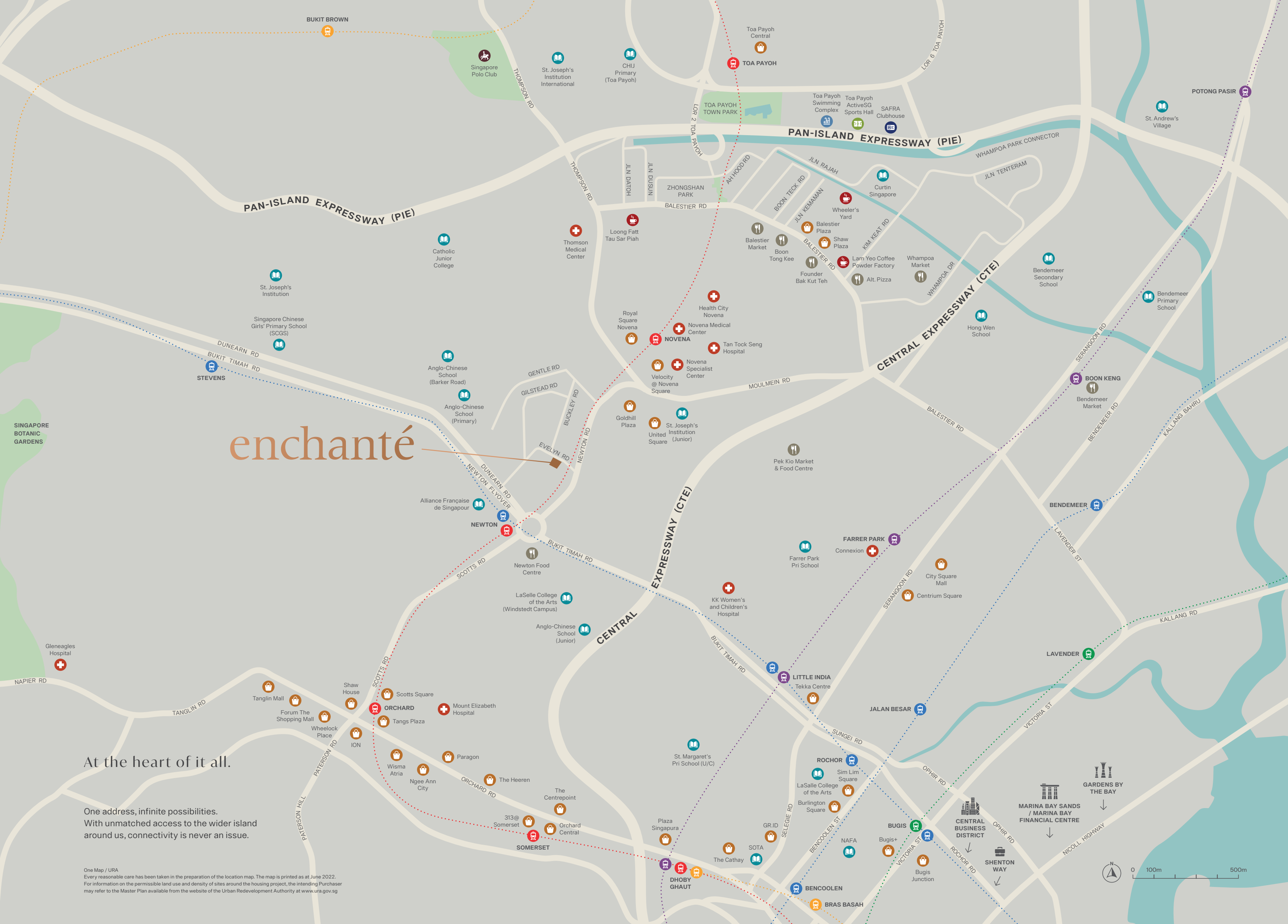
Artist's Impression

enchanté

At the heart of it all.

One address, infinite possibilities.
With unmatched access to the wider island
around us, connectivity is never an issue.

One Map / URA
Every reasonable care has been taken in the preparation of the location map. The map is printed as at June 2022.
For information on the permissible land use and density of sites around the housing project, the intending Purchaser
may refer to the Master Plan available from the website of the Urban Redevelopment Authority at www.ura.gov.sg



The heart of Singapore within your grasp.

“location, location, location”
- Harold Samuel





Health City Novena

- Mount Elizabeth Novena Hospital
- Tan Tock Seng Hospital
- Novena Medical Centre
- Lee Kong Chian School Of Medicine (Novena Campus)
- Ng Teng Fong Centre For Healthcare Innovation



- Gleneagles Hospital
- Farrer Park Hospital
- Raffles Hospital
- KK Women's and Children's Hospital

The pinnacle of medical care.

A rising medical hub, Novena sits at the cusp of Singapore's premier medical services. Achieve peace of mind with the knowledge that your medical needs will always be in safe hands.





Immerse in the tranquility of nature.



Pristine natural beauty,
a footstep away.

Revel in the beauty of nature - with Singapore's first
UNESCO World Heritage site, the Singapore Botanic
Gardens, mere moments away.

A wide-angle photograph of the Singapore skyline at sunset. The sky is a mix of blue and orange, with wispy clouds. The water in the foreground is calm, reflecting the buildings and the sky. A bridge is visible in the middle ground, crossing the water. The buildings are of various heights and colors, including blue, green, and gold.

enchanté

places you in Singapore's Central Business District in no time.

Toing and froing between your home and business shall never be a hassle.



Clubs

- Tanglin Club
- The American Club
- Raffles Town Club
- Singapore Polo Club

“Education is the most powerful weapon which you can use to change the world”

- Nelson Mandela



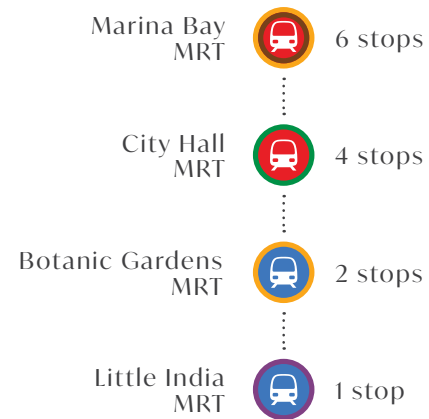
Schools

Within 1km

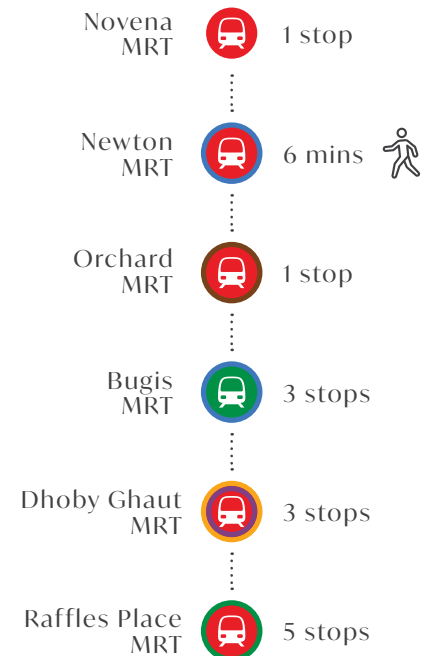
- Anglo-Chinese School (Primary)
- Anglo-Chinese School (Junior)
- Anglo-Chinese School (Barker Road)
- St. Joseph's Institution (Junior & Secondary)

Between 1 - 2km

- CHIJ Primary (Toa Payoh)
- Farrer Park Primary School
- Hong Wen School
- Singapore Chinese Girls' Primary School
- St. Margaret's School (Primary)



enchanté



A hub of excellence.

Excellence awaits you at **enchanté**, on Evelyn Road. With renowned educational facilities and exclusive members clubs - a spectacular life lies in anticipation.

‘We come into the world with an inherent awareness of the magical and an understanding of the enchanted life. We want life to be more than just the daily grind; we want it to have meaning and purpose. We want it to have enchantment.’

- Lynn Williams





Artist's Impression

LEVEL 2

A paradise of tranquility.

A renewal for your body and mind.
Take refuge in the healing waves.



A landscape of refined living.

Bask in the glow of natural beauty - with six allocated green spaces, a lush, verdant atmosphere surrounds your every step.

LEVEL 2

The Interchange / 相見歡

Elegance and function come together at The Interchange - where you can host cosy gatherings, boisterous celebrations or focused work sessions moments away from your abode. Productivity and pleasures have never felt more at home.



Alfresco Dining & Multi-purpose Room

Artist's Impression



Furry Friends' Garden

Artist's Impression

LEVEL 4

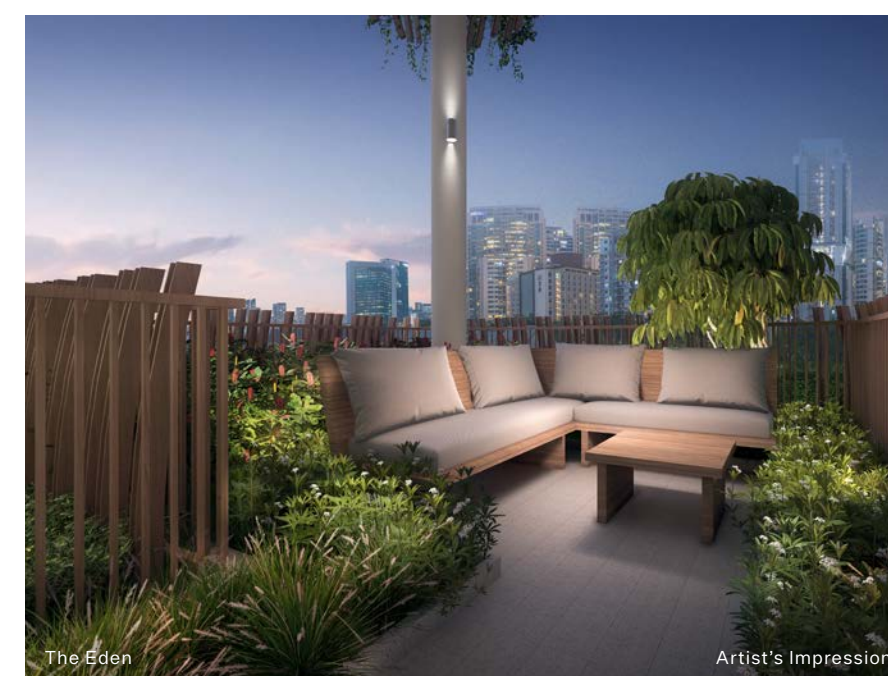
Furry Friends' Garden / 萌寵園

A place of gathering and warmth for the entire family, the Furry Friends' Garden provides a natural and comforting place for you and your loved ones to take a break. With a dedicated play space for the furry friends - it shall be the ideal space for the family (including our furry friends) to unwind and relax.

LEVEL 6

The Eden / 桃花源

A garden of discovery, the Eden plays home to our friends from nature. Flowers, sunlight and foliage provide an environment for natural growth to thrive - while dedicated walking paths and seats allow you and your loved ones to be embraced by this oasis of tranquillity.



The Eden

Artist's Impression

LEVEL 8

The Herbetum / 紫苑

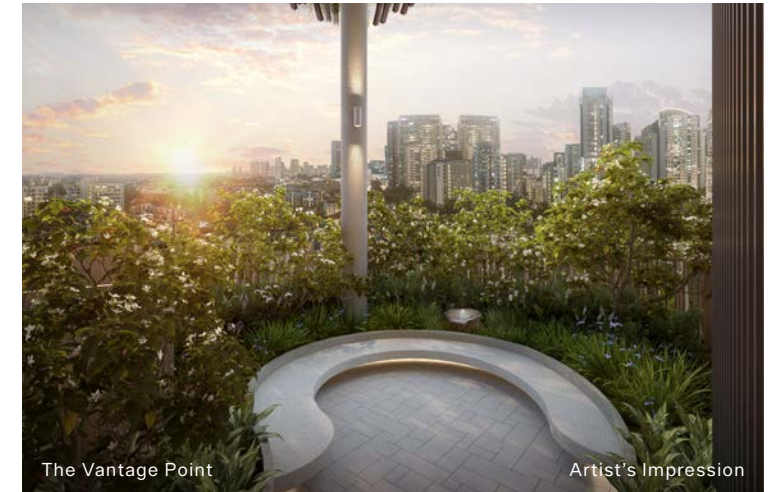
The Herbetum plays host to a range of herbs and spices, each adding the preferred flavour and aroma to the display of your culinary skills when you prepare the next home-cooked meal for your loved ones.



LEVEL 12

The Vantage Point / 靜遠間

The Vantage Point, with the breath-taking view of the city and the soothing effect of the water features, shall lure you away from the vicissitudes of daily life and provide you with a space for your daily retreat.



LEVEL 10

The Serenity / 養心閣

A paradise of sights and scents, the Serenity is a designated space for productivity – with a stunning sight to behold and the delightful scents of nature, the Serenity shall be the ideal place for your next WFH, helping you to remain agile and competitive while away from the office.



Unmatched beauty and elegance.

Each space, carefully designed to soothe and comfort. A sanctuary of space and time. This is a home beyond the ordinary - luxury in the heart of the city.

LEVEL 14

The Utopia / 天人合一

Relaxing your body and refocusing your mind? The Utopia has been designed precisely to attain these two objectives in mind. Surrounded by its complete peace and tranquillity and away from the turmoil of modern life, the Utopia shall be the ideal place to relax, and become refreshed. Whether you are doing your meditation on your yoga mat or taking an unhurried barefoot stroll across the pebbles, the Utopia shall welcome your arrival.

Living Room



Artist's Impression

A paragon of
design and function.

Designed with the family in mind - each home in **enchanté**,
on Evelyn Road is a home for multiple generations, where
form and function come together in perfect harmony.

Master Bedroom



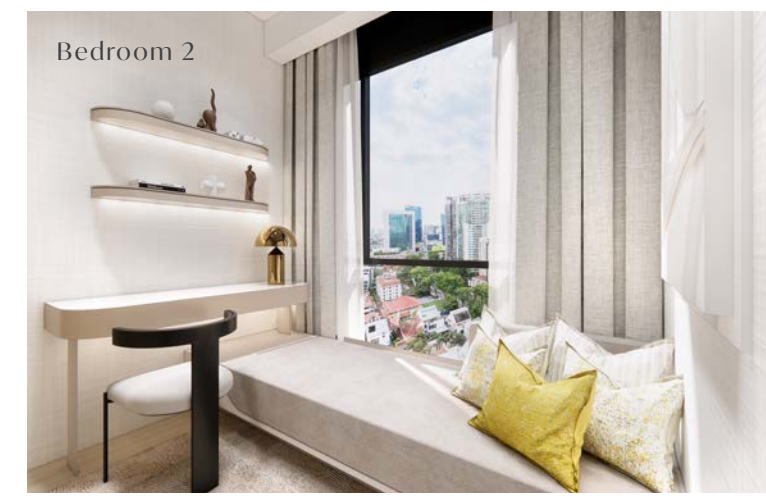
Artist's Impression

Studio



Artist's Impression

Bedroom 2



Immerse in premier comfort.

An exhibition of designer refinement - each unit comes fitted with progressive fittings, and lavish colour schemes - the pinnacle of functionality and elegance.

A home to
be cherished.

Come back to the home of the future. Integrated smart
home technologies ensure that you will have peace of
mind no matter where you are.

snaldero
CUCINE PER LA VITA

Miele

DURAVIT

hansgrohe

FODI



Smart Gateway

Your hub for all smart home services - the
Smart Gateway grants you connectivity and
compatibility with an array of smart devices.

Smart Air-Con Control

Enjoy the atmosphere you want - with the
Smart Air-Con control, you'll never have to
wait for that ideal room temperature anymore.

Digital Lock

Leave those keys behind - the Digital Lock
ensures that you'll never be locked out again.



A smart home that
takes care of you.

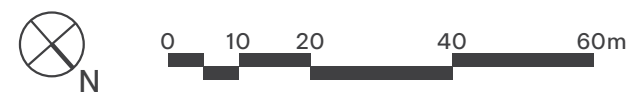
More than a house - a smart home. Future-proof
your home with smart technologies that bring you
security and convenience.

Site Plan



Legend

- | | | |
|-----------------------------------|------------------------------------|---|
| 1 Driveway to 1st Storey Car Park | 12 Sky Gardens | Ancillary |
| 2 Fitness Gymnasium | Furry Friends' Garden @ 4th Storey | A Sprinkler Tank @ 3rd Storey |
| 3 BBQ Pit | The Eden @ 6th Storey | B Genset @ 16th Storey |
| 4 Alfresco Dining | The Herbetum @ 8th Storey | C Water Tank @ 16th Storey |
| 5 Multi-purpose Room | The Serenity @ 10th Storey | D Side Pedestrian Entrance @ 1st Storey |
| 6 Lap Pool | The Vantage Point @ 12th Storey | E Exit Staircase |
| 7 Jacuzzi | The Utopia @ 14th Storey | F Bin Point @ 1st Storey |
| 8 Outdoor Shower | | G Bicycle Parking Lots @ 1st Storey |
| 9 Relaxation Sunken Deck | | II EV - Charging Point @ 1st Storey |
| 10 Landscape Lawn | | |
| 11 Changing Room | | |



Schematic Diagram

LEVEL / No.	Unit Type		
16	Type PH - 5Br + Family Area		
15	Type C - 4Br + Home Office	Type D - 3Br (Duplex)	Sky Garden
14	Type C - 4Br + Home Office		
13	Type C - 4Br + Home Office	Type D - 3Br (Duplex)	Sky Garden
12	Type C - 4Br + Home Office		
11	Type A1 - 3Br + Home Office	Type B - 3Br + Home Office	
10	Type A1 - 3Br + Home Office	Type B - 3Br + Home Office	Sky Garden
9	Type A - 3Br DK	Type B - 3Br + Home Office	
8	Type A - 3Br DK	Type B - 3Br + Home Office	Sky Garden
7	Type A - 3Br DK	Type B - 3Br + Home Office	
6	Type A - 3Br DK	Type B - 3Br + Home Office	Sky Garden
5	Type A - 3Br DK	Type B - 3Br + Home Office	
4	Type A - 3Br DK	Type B - 3Br + Home Office	Sky Garden
3	Type A - 3Br DK	Type B - 3Br + Home Office	
2	Communal Facilities		
1	Surface Carpark		

- | | |
|-----------------------------------|-----------------------------------|
| Type A - 3-Bedroom Dual-Key | Type C - 4-Bedroom + Home Office |
| Type A1 - 3-Bedroom + Home Office | Type D - 3-Bedroom (Duplex) |
| Type B - 3-Bedroom + Home Office | Type PH - 5-Bedroom + Family Area |

TYPE A

3 BEDROOM DUAL-KEY
TOTAL 7 UNITS - 3RD & 9TH STOREY

#03-01/ #04-01/ #05-01/ #06-01/
#07-01/ #08-01/ #09-01

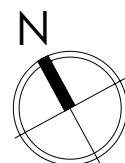
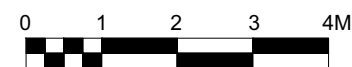
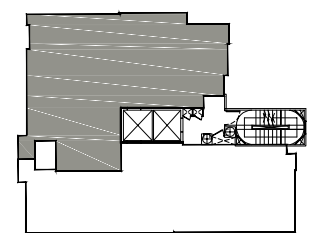
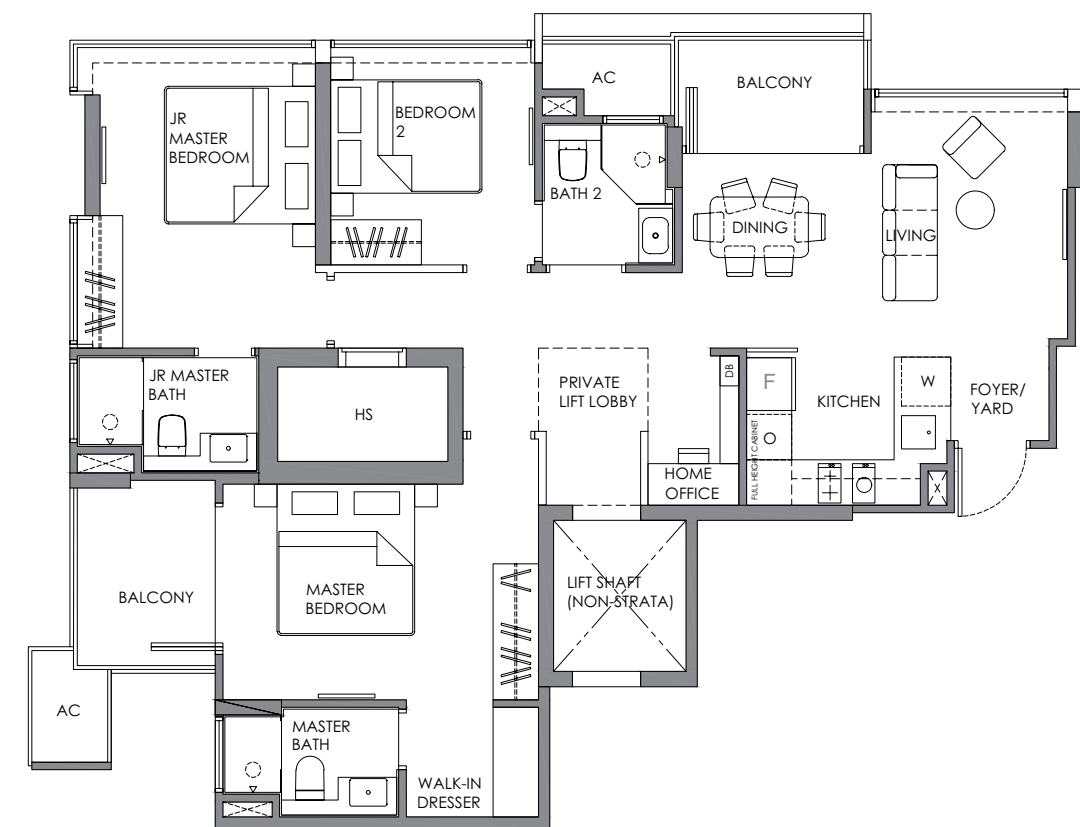
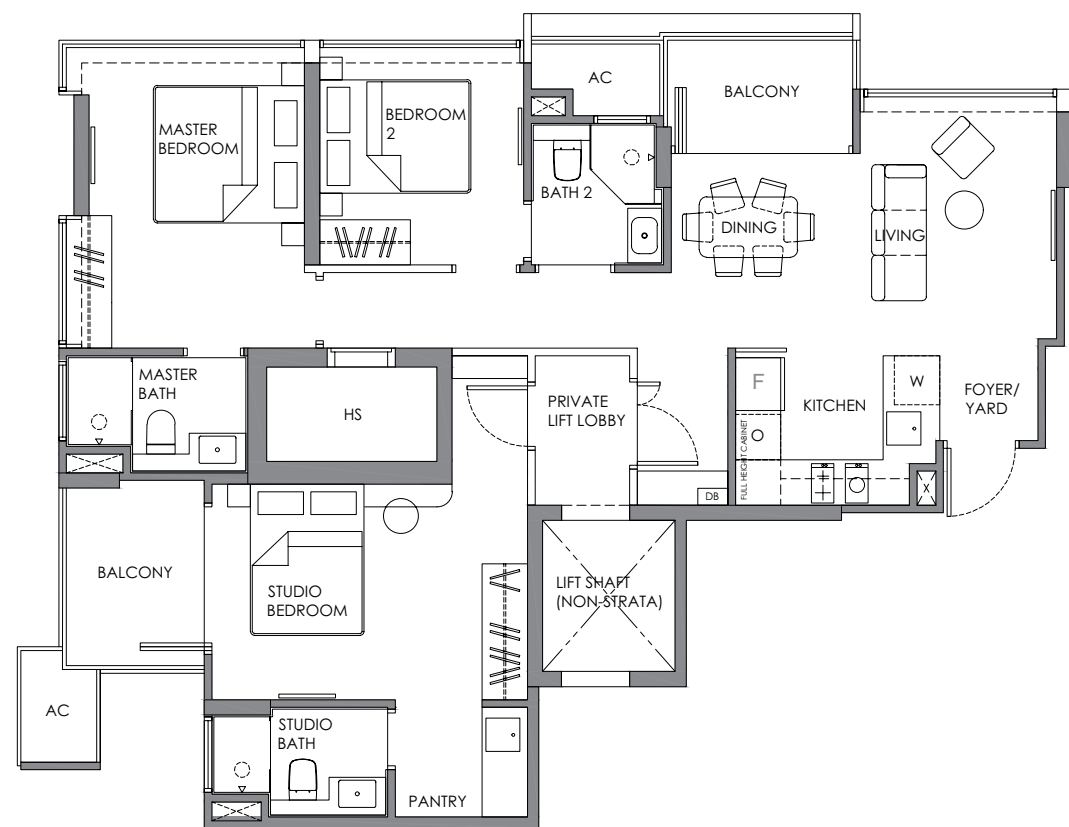
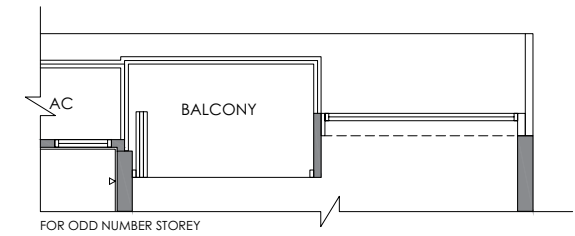
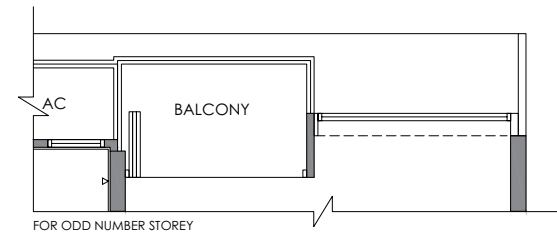
Strata area : 101 sqm / 1,087 sqft

TYPE A1

3 BEDROOM + HOME OFFICE
TOTAL 2 UNITS - 10TH & 11TH STOREY

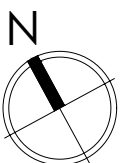
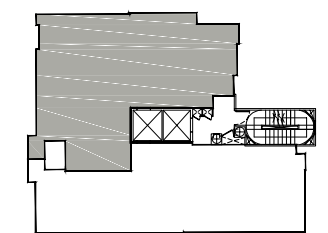
#10-01 / #11-01

Strata area : 101 sqm / 1,087 sqft



Plans are not to scale and subject to any amendment as may be approved by relevant authorities. All areas are approximate and are subject to final survey.

HS = Household Shelter; DB = Distribution Board; AC = Air Con Ledge;
X = Void; Master Bath = Master Bathroom; Jr Master Bath = Junior Master Bathroom; Bath = Bathroom; Pwdr = Powder Room; F = Fridge; O = Oven;
W = Washing Machine Cum Dryer



Plans are not to scale and subject to any amendment as may be approved by relevant authorities. All areas are approximate and are subject to final survey.

HS = Household Shelter; DB = Distribution Board; AC = Air Con Ledge;
X = Void; Master Bath = Master Bathroom; Jr Master Bath = Junior Master Bathroom; Bath = Bathroom; Pwdr = Powder Room; F = Fridge; O = Oven;
W = Washing Machine Cum Dryer

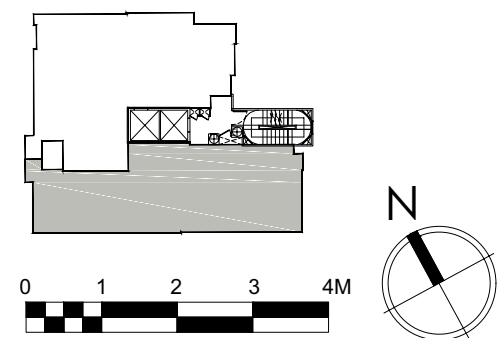
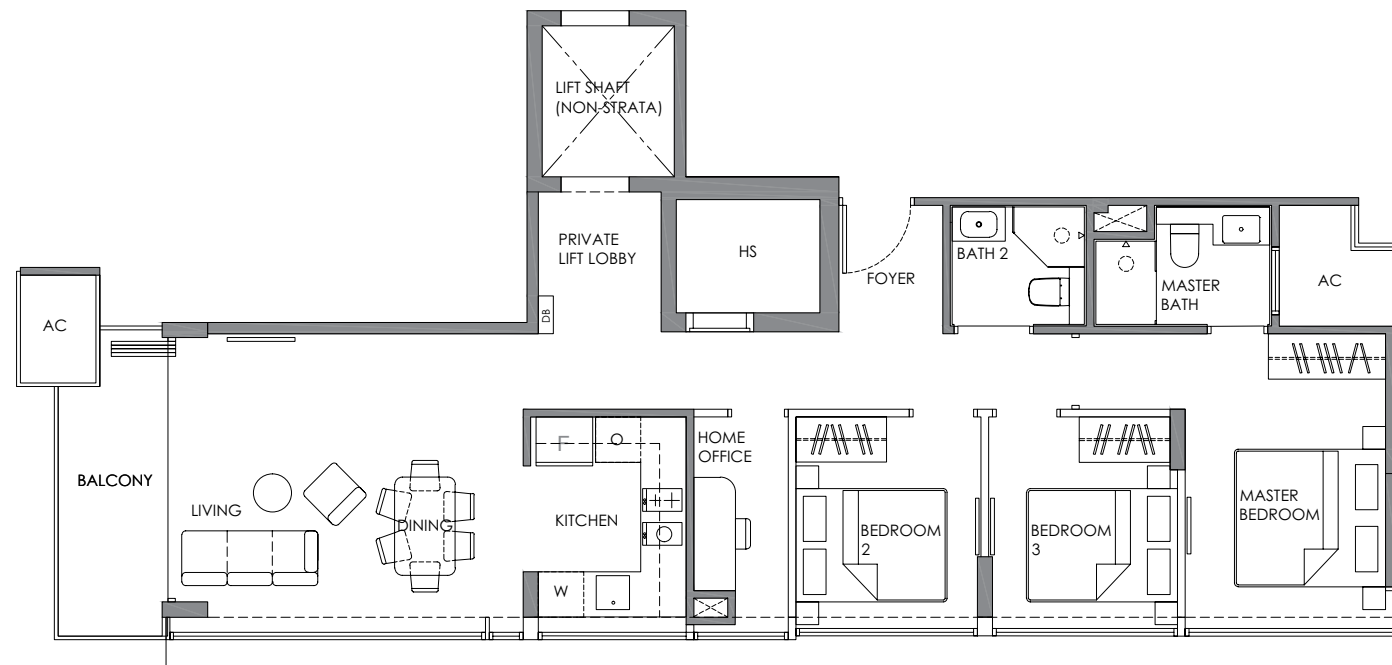
TYPE B

3 BEDROOM + HOME OFFICE

TOTAL 9 UNITS - 3RD & 11TH STOREY

#03-02/ #04-02/ #05-02/ #06-02/ #07-02/
#08-02/ #09-02/ #10-02/ #11-02

Strata area : 93 sqm / 1,001 sqft



Plans are not to scale and subject to any amendment as may be approved by relevant authorities. All areas are approximate and are subject to final survey.

HS = Household Shelter; DB = Distribution Board; AC = Air Con Ledge;
X = Void; Master Bath = Master Bathroom; Jr Master Bath = Junior Master Bathroom; Bath = Bathroom; Pwdr = Powder Room; F = Fridge; O = Oven;
W = Washing Machine Cum Dryer

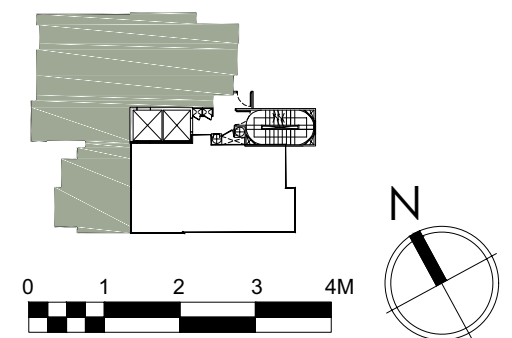
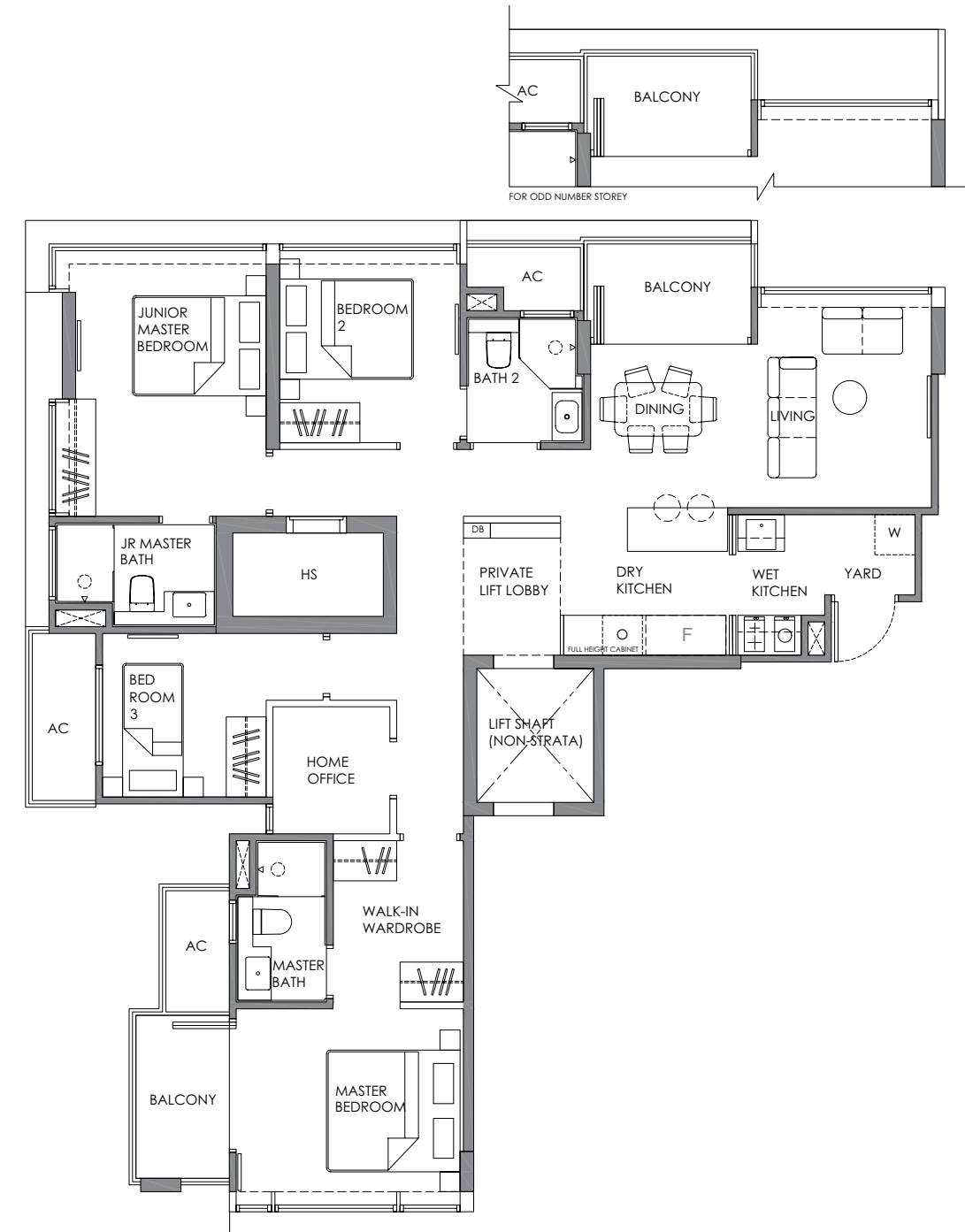
TYPE C

4 BEDROOM + HOME OFFICE

TOTAL 4 UNITS - 12TH TO 15TH STOREY

#12-01/ #13-01/ #14-01/ #15-01

Strata area : 119 sqm / 1,281 sqft



Plans are not to scale and subject to any amendment as may be approved by relevant authorities. All areas are approximate and are subject to final survey.

HS = Household Shelter; DB = Distribution Board; AC = Air Con Ledge;
X = Void; Master Bath = Master Bathroom; Jr Master Bath = Junior Master Bathroom; Bath = Bathroom; Pwdr = Powder Room; F = Fridge; O = Oven;
W = Washing Machine Cum Dryer

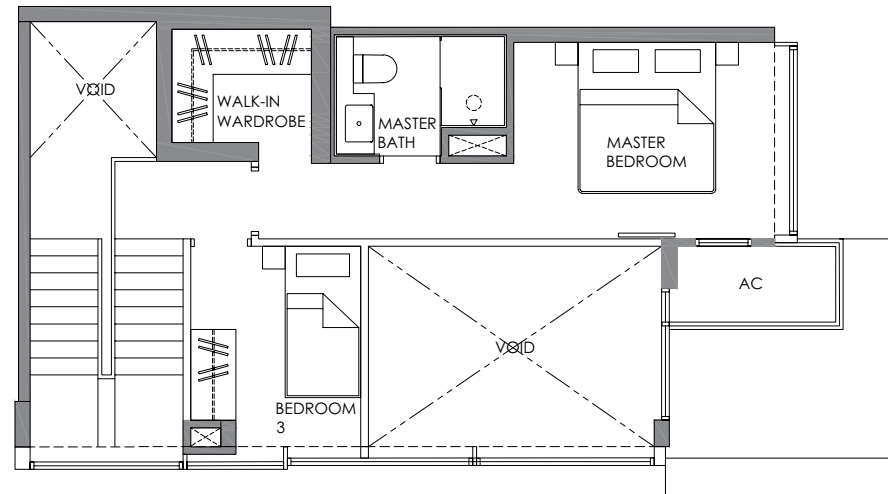
TYPE D

3 BEDROOM (DUPLEX)

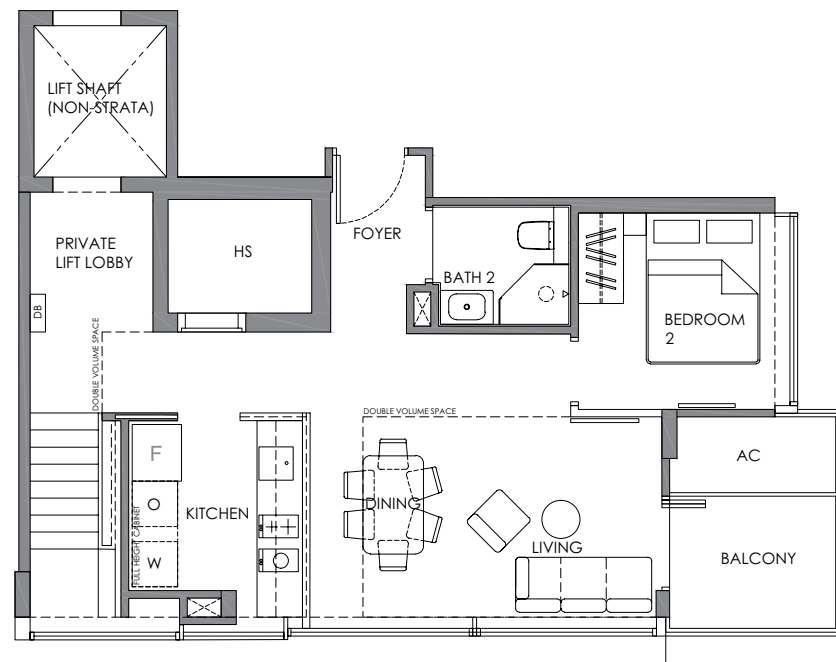
TOTAL 2 UNITS AT 12TH / 13TH / 14 & 15TH STOREY

#12-02/ #14-02

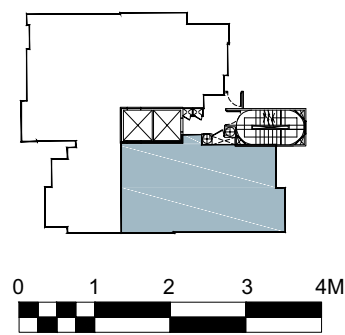
Strata area : 118 sqm / 1,270 sqft



UPPER STOREY



LOWER STOREY



Plans are not to scale and subject to any amendment as may be approved by relevant authorities. All areas are approximate and are subject to final survey.

HS = Household Shelter; DB = Distribution Board; AC = Air Con Ledge;
X = Void; Master Bath = Master Bathroom; Jr Master Bath = Junior Master Bathroom; Bath = Bathroom; Pwdr = Powder Room; F = Fridge; O = Oven;
W = Washing Machine Cum Dryer

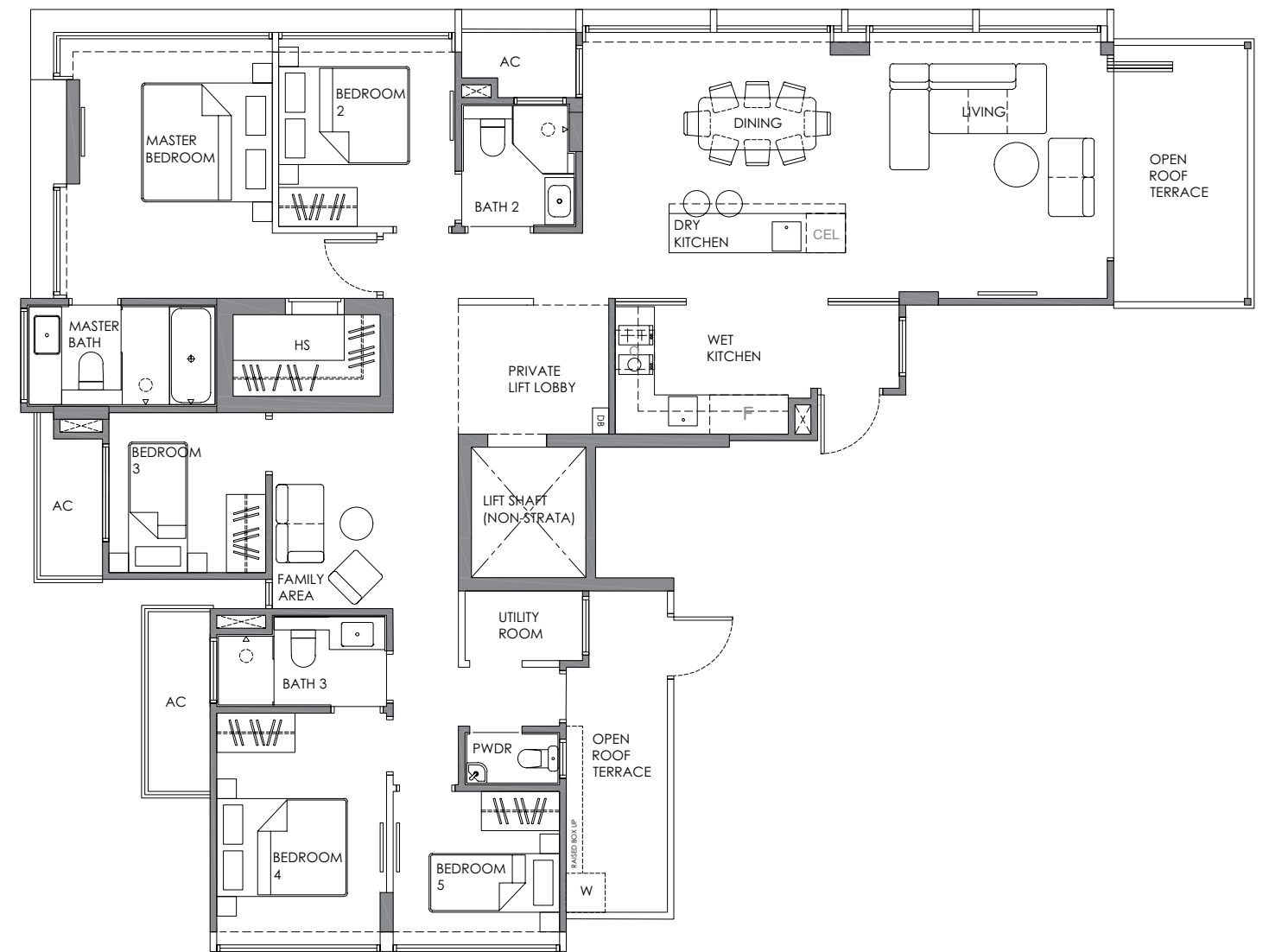
TYPE PH

5 BEDROOM

TOTAL 1 UNIT AT 16TH STOREY

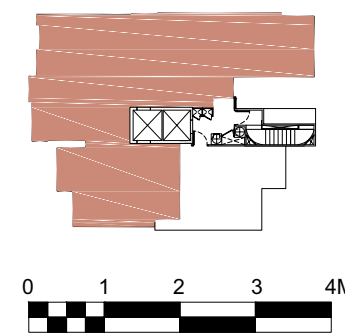
#16-01

Strata area : 158 sqm / 1,701 sqft



Plans are not to scale and subject to any amendment as may be approved by relevant authorities. All areas are approximate and are subject to final survey.

HS = Household Shelter; DB = Distribution Board; AC = Air Con Ledge;
X = Void; Master Bath = Master Bathroom; Jr Master Bath = Junior Master Bathroom; Bath = Bathroom; Pwdr = Powder Room; F = Fridge; O = Oven;
W = Washing Machine Cum Dryer





Artist's Impression



VICTORYLAND

Victory Land Group (凱旋置地集團) ("VLG") is a real estate group which focuses on the development of quality and elegantly-designed homes for its discerning clientele. VLG shall continue with its relentless pursuit of originality, excellence and perfection in all its future projects.



enchanted

FREEHOLD

Show Suites At 31 Evans Road

Developer Name: Evelyn Pte Ltd • Co. Reg. No.: 202108879G • Tenure: Freehold • Legal Description: Lot 99515L TS28 at No. 3 Evelyn Road • Developer's Licence: C1413 • Encumbrances: Mortgage registered in favour of Hong Leong Finance Limited • BP No.: A1525-00002-2021-BP01 Approved on 02 June 2022 • Expected TOP Date: 25 March 2026 • Expected Date of Legal Completion: 25 March 2029

While every reasonable care has been taken in preparing this brochure, leaflet, specifications, constructing the sales models and sales gallery/showflat (the "Materials"), the Developer and its agents and their respective servants and contractors do not warrant the accuracy of any of the Materials and shall in no way be held responsible for any inaccuracies in their contents or between the Materials and the actual unit when built. The Developer shall not be bound by any statement, representation or promise (written or oral) by its agents & contractors. All statements and depictions are believed to be correct but are not to be regarded as statements or representations of fact. The Sale and Purchase Agreement shall form the entire agreement between the Developer and the Purchaser and shall supersede all statements, representations or promises made prior to the signing of the Sale and Purchase Agreement. All information, specifications, layout plans, building plans, location of facilities, finishes and appliance selection and visuals are subject to any changes as may be required and approved by the Architect, Developer and/or by the relevant authority and may be changed without notice. The Materials are not intended to be contractual documents and shall not form part of any offer or contract. Visuals, renderings, illustrations, models, showflat displays and photography are artist's impressions only and none can be regarded as representation of fact. Floor areas are approximate measurements only and not to scale. It is subject to final survey. The property is subject to inspection by the relevant authorities to comply with current codes of practice.

enchanté

