

**FOR SALE  
NEWLY TOP**



**D'EDEN @ 17A EDEN GROVE (D19)  
INTERMEDIATE TERRACE**

**Property Description**

A 3 Storey Intermediate Terrace  
with a Lift and an Attic

**Orientation:** East Facing

**Land Area:** 1660 sqft

**Built up:** 4919 sqft

**Tenure:** Freehold

**District:** 19

**C.S.C :** April 2022

**Features:**

- Park 2 cars
- 5 Bedrooms Ensuite
- Bravat Sanitaryware
- Bosch Appliances

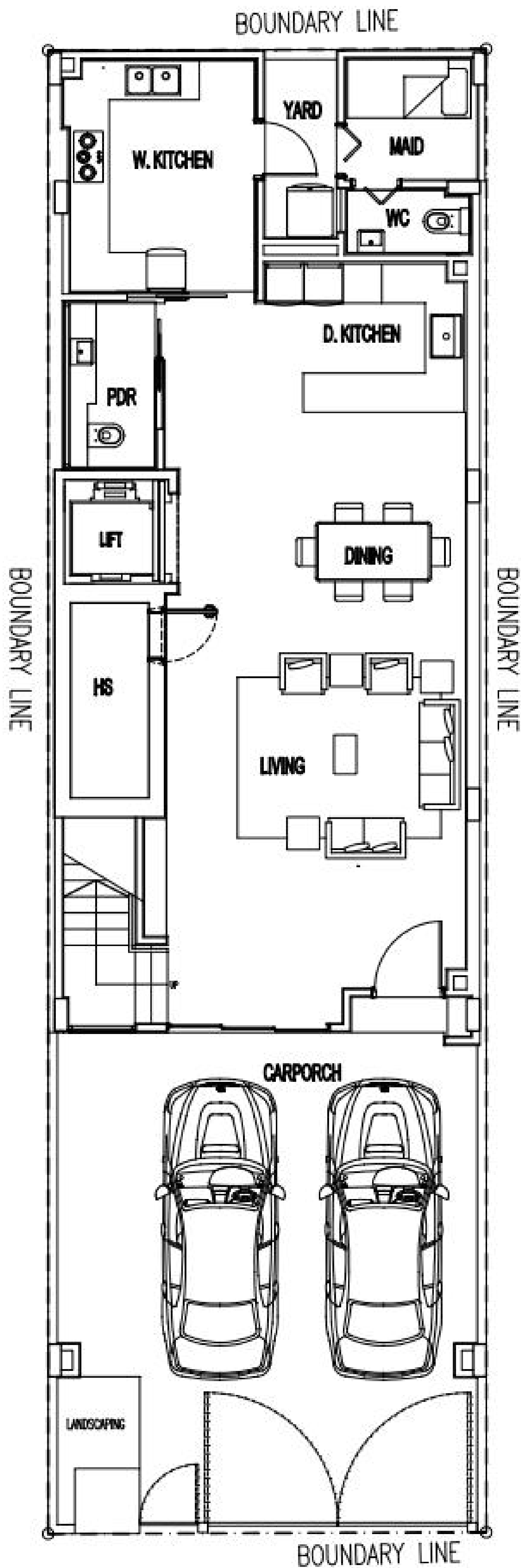
**Schools and Amenities**

- Cedar Primary School < 1km
- Maris Stella High School < 1km
- Woodleigh MRT est. 500m

**ASKING  
\$5.9MIL  
ONLY!**



# THE FLOOR PLANS (FIRST STOREY)

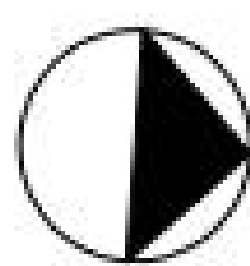
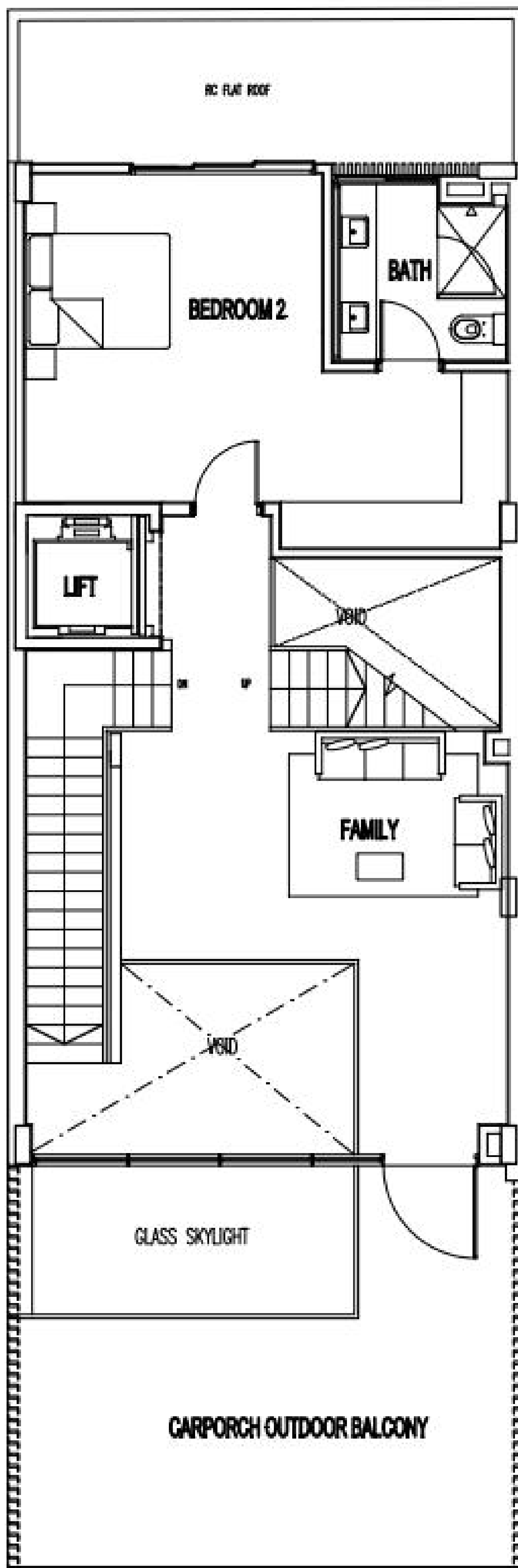


## 1st Storey Plan

0 2 4 6 8 10m

NSA = 152 SQM  
TOTAL NSA = 457 SQM

# THE FLOOR PLANS (SECOND STOREY)

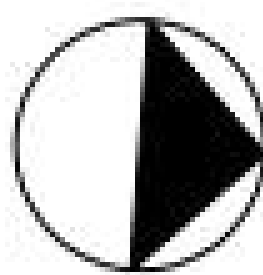
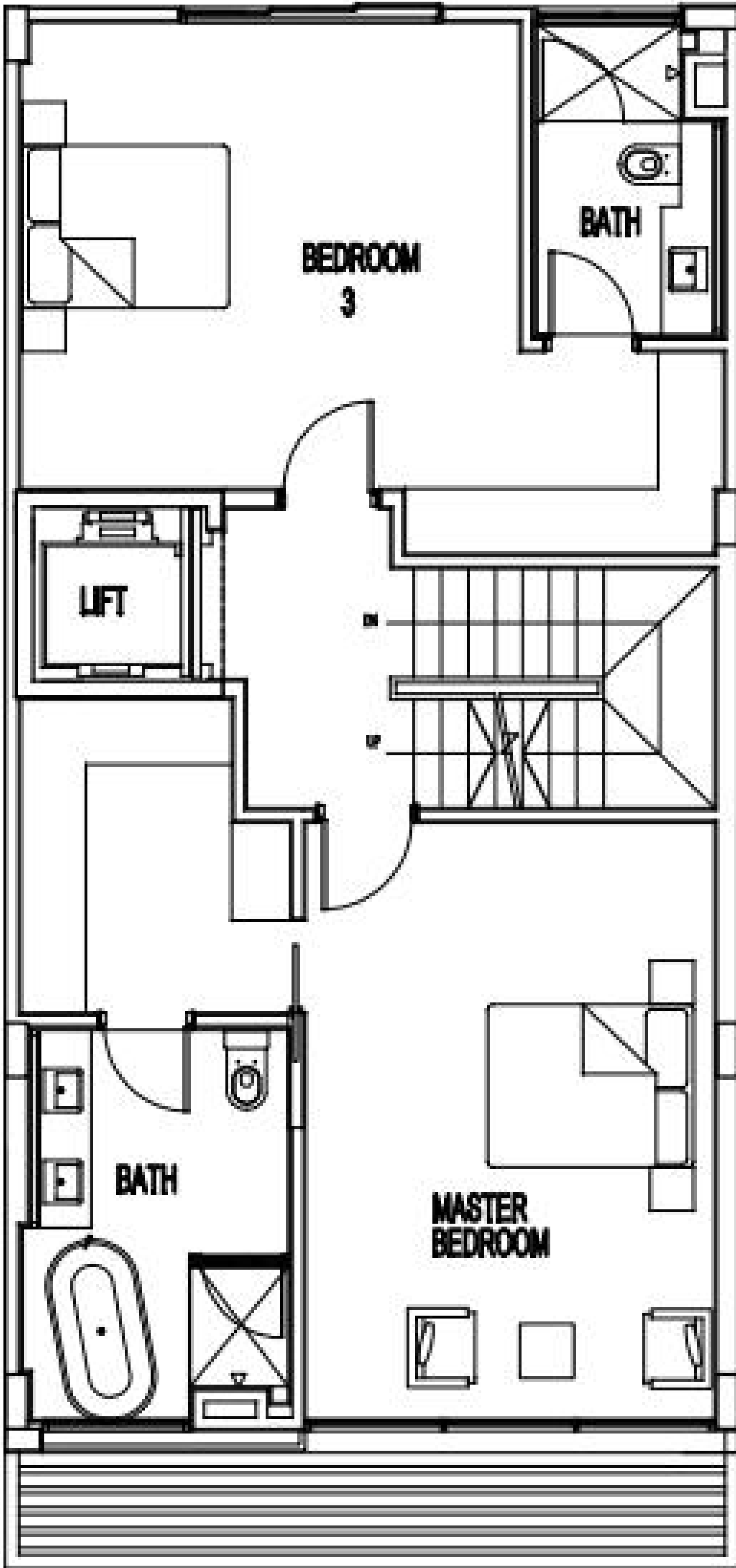


## N 2nd Storey Plan

0 2 4 6 8 10m

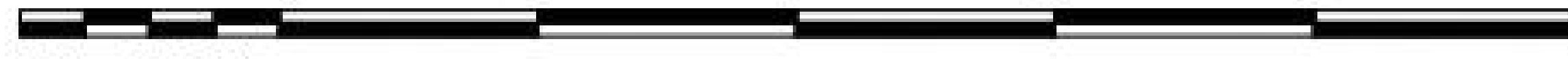
NSA = 129 SQM

THE FLOOR PLANS (THIRD STOREY)



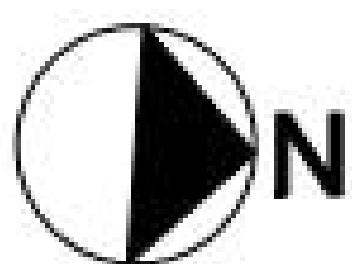
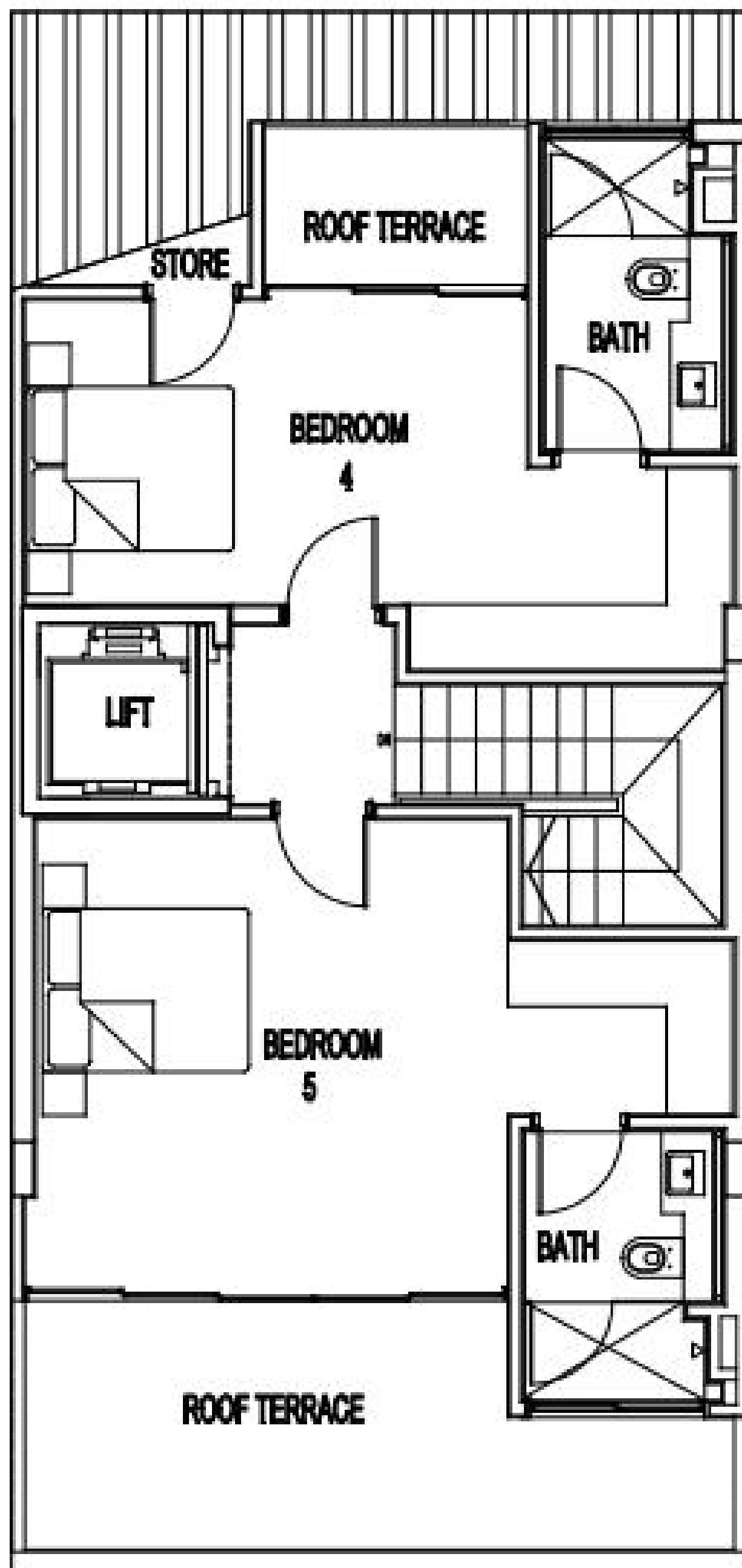
# N 3rd Storey Plan

0 2 4 6 8 10m



NSA = 88 SQM

# THE FLOOR PLANS (ATTIC LEVEL)



## Attic Plan

0 2 4 6 8 10m



NSA = 88 SQM