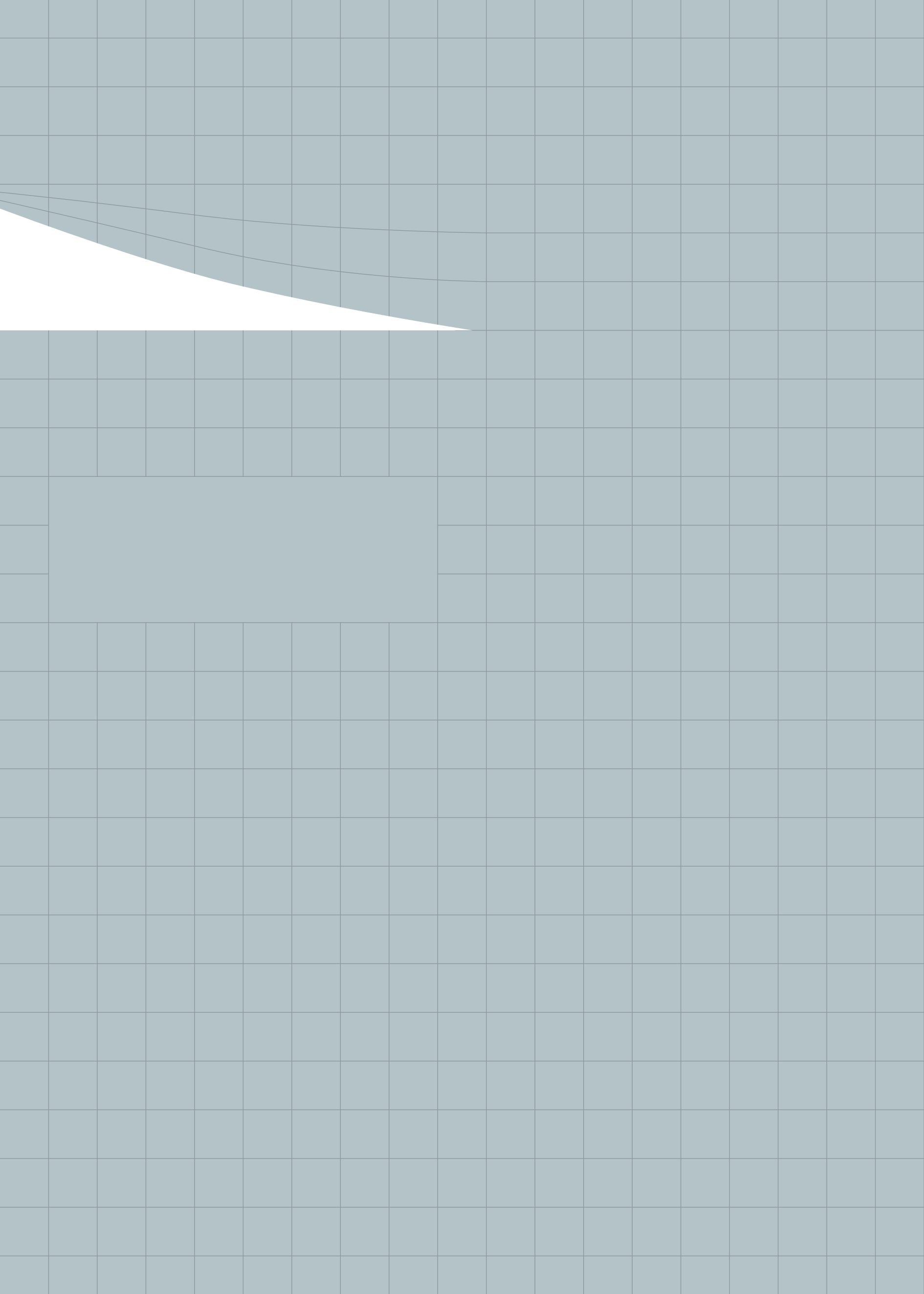
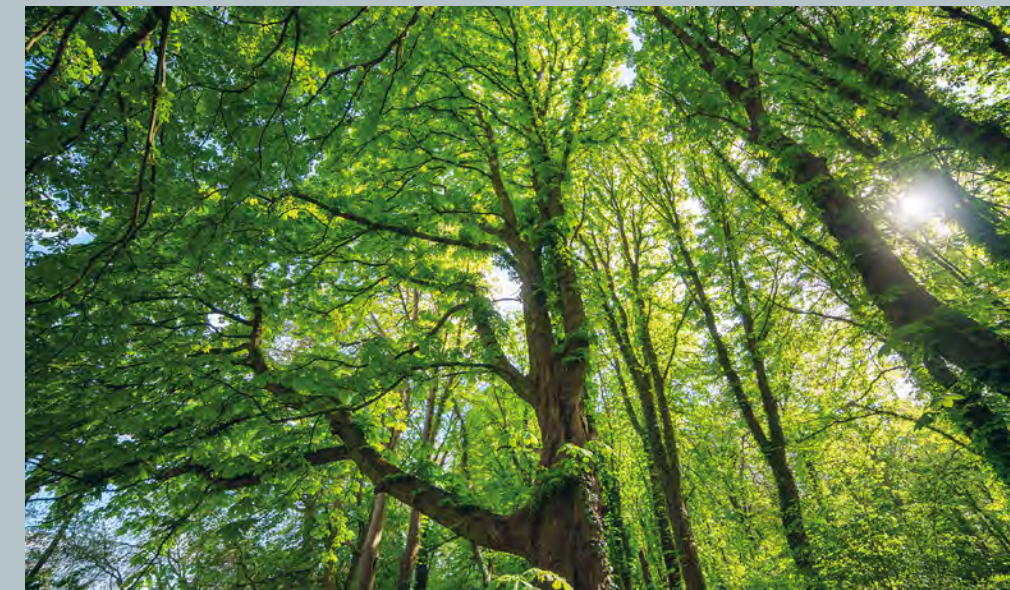




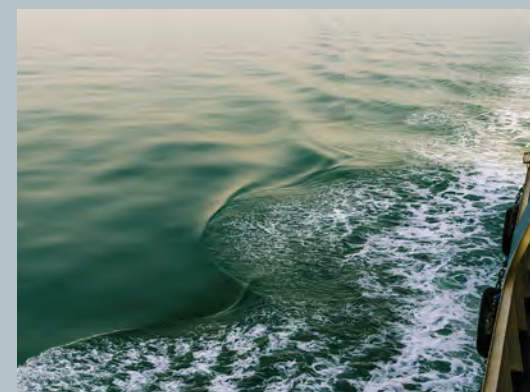
CANNINGHILL
PIERS



BY THE HILL



BY THE RIVER

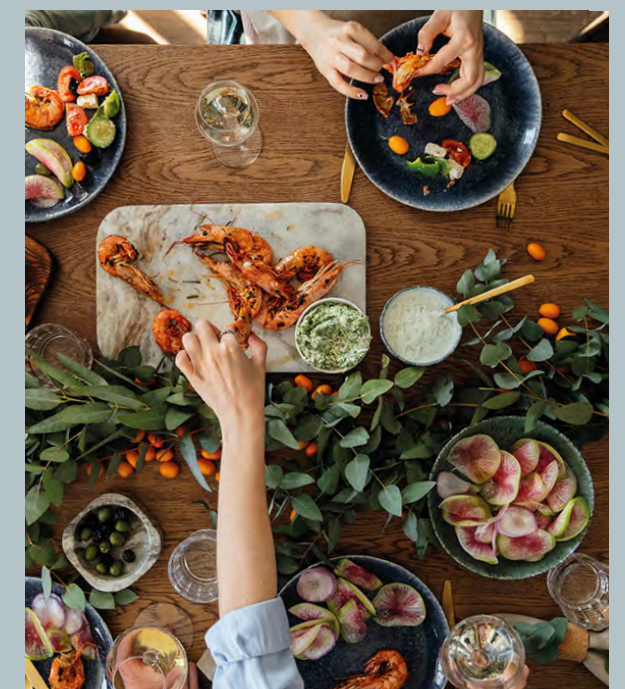


BY ITSELF



CANNINGHILL PIERS

BY THE CITY





Artist's impression

A HOME WITHOUT PEER FOR A LIFE WITHOUT COMPARE

Jointly developed by CapitaLand Development (CLD) and City Developments Limited (CDL), there is no place quite like CanningHill Piers. On one side lies glittering Singapore River and its vibrant cafes, bars and restaurants. On the other side, the verdant tranquility of Fort Canning Hill provides the perfect foil. Beyond its unmatched position overlooking two of Singapore's historic sites, this new luxury residence is set to be a landmark in its own right.

Bearing the bold signature of lauded architectural firm BIG—Bjarke Ingels Group, CanningHill Piers rises proudly above Clarke Quay. And as part of a transformative integrated precinct housing an inspired mix of F&B, retail, hotel and serviced residence too — truly, the very best of life is yours for the taking.

BIG

To bring their vision to life, CLD and CDL have brought BIG—Bjarke Ingels Group on board. Acclaimed for their revolutionary approach and placemaking projects all over the world, this collaboration with BIG has resulted in a new paradigm of city living.



Bjarke Ingels,
architect
extraordinaire

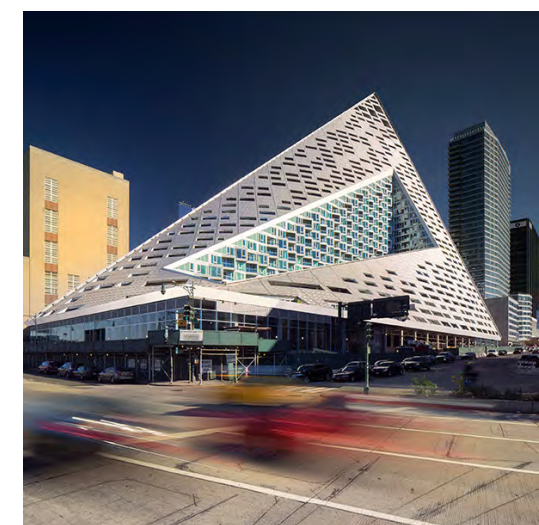
Artfully balancing the private and the public, the integrated precinct is designed for the enjoyment of the residents yet is just as welcoming to the community at large with diverse civic spaces and frontage that extends seamlessly onto the bustling river promenade.



CopenHill,
Denmark



Lego House,
Denmark



VIA 57 West,
USA

TRANSFORMING THE SKYLINE,
ENRICHING THE RIVERINE

TAKE YOUR PLACE IN
THE CITY'S MOST ANTICIPATED
RIVERSIDE INTEGRATED PRECINCT



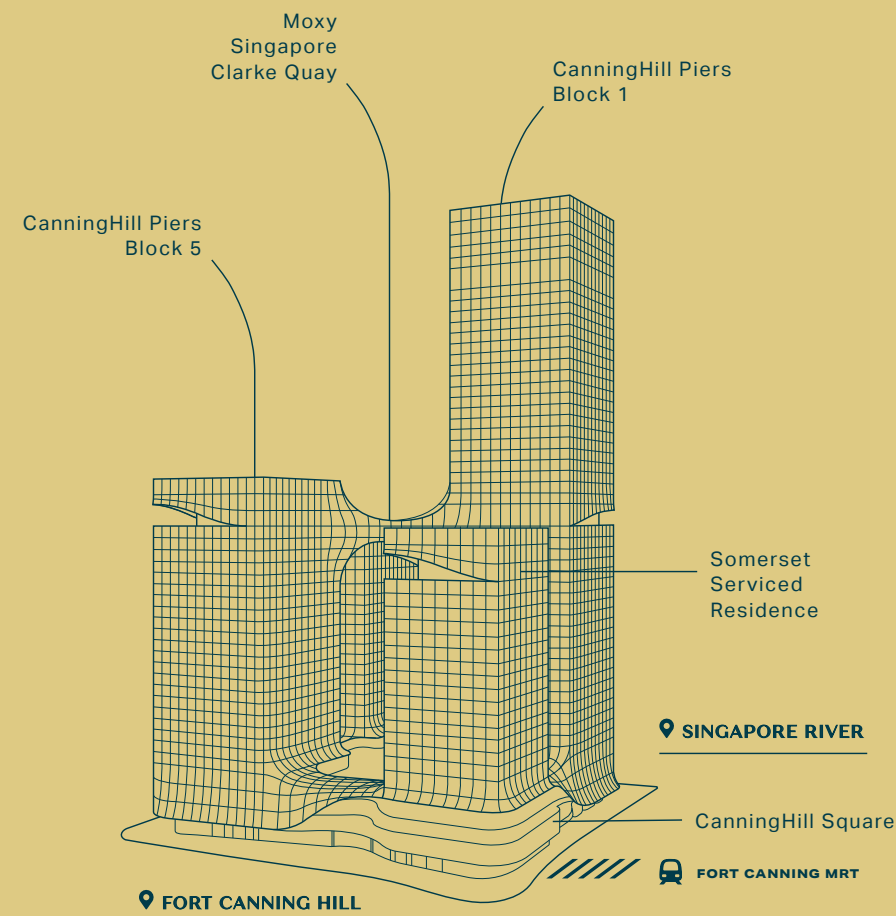
A NEW VISION OF INTEGRATED LIVING

With three levels of recreational facilities above, three levels of F&B and retail below, as well as direct access to Fort Canning MRT, residents can look forward to conveniences of every kind. Feeling peckish? Simply take the lift down and take your pick of eateries. In the mood for an impromptu party? The gourmet supermarket at the basement has all you need to whip up some canapés, paired with wine or champagne as you please.

In addition to the two residential towers of CanningHill Piers, Moxy Singapore Clarke Quay and Somerset Serviced Residence take up the other two towers, completing this new landmark and social hub of the Singapore River district.



Seamlessly connected to tranquil Fort Canning Hill and vibrant Singapore River

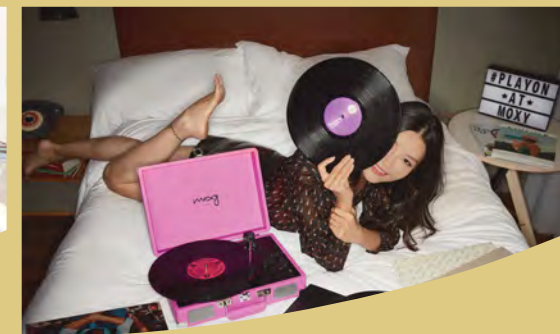


CanningHill Piers
(Luxury Residences)

CanningHill Square
(F&B/Retail)

Somerset Serviced Residence

Moxy Singapore Clarke Quay (Hotel)



Images are for illustration only



GO FAR WITH ALL THE RIGHT CONNECTIONS

EASY CONNECTIVITY

- Fort Canning MRT (Downtown Line)
- Clarke Quay MRT (North East Line)
- River Taxi

DINING & SHOPPING

- Clarke Quay
- Boat Quay
- Robertson Quay
- Orchard Road
- Marina Bay Sands

ARTS & CULTURE

- National Museum of Singapore
- National Gallery Singapore
- Victoria Theatre and Concert Hall
- Esplanade
- ArtScience Museum

PARKS & RECREATION

- Fort Canning Park
- Pearl's Hill City Park
- Gardens by the Bay

WORK & LEARN

- Central Business District
- Marina Bay Financial District
- River Valley Primary School
- School of the Arts (SOTA)
- Nanyang Academy of Fine Arts (NAFA)
- Singapore Management University (SMU)
- LASALLE College of the Arts

LEGEND

- EAST-WEST MRT LINE
- NORTH-SOUTH MRT LINE
- NORTH EAST MRT LINE
- CIRCLE MRT LINE
- DOWNTOWN MRT LINE
- THOMSON-EAST COAST MRT LINE

0 500M

Every reasonable care has been taken in the preparation of the location map. The map is printed as at October 2021. For information on the permissible land use and density of sites around the housing project, the intending Purchaser may refer to the Master Plan available from the website of the Urban Redevelopment Authority at www.ur.gov.sg.

THE RIVER GAVE US LIFE

WE'RE NOW RETURNING THE FAVOUR



For illustration only



For illustration only

Stretching far back in history, Singapore River has been the heart and soul in the development of Singapore as a nation and as an economic powerhouse. Legend has it that the river's mouth was where prince Sang Nila Utama spotted the lion and renamed our land Singapura, Sanskrit for Lion City. After the founding of modern Singapore in 1819, the river area was further developed, cementing the city's position as an important port. Goods from all over the world were brought up the river by flotillas of bumboats, hurriedly unloaded by coolies and stored in warehouses lining the banks.

Today, the river continues to bustle with life. The heritage warehouses and shophouses have been turned into all manner of cafes, bars and restaurants as well as arts spaces. These conserved buildings stand alongside impressive skyscrapers, and together they make up Singapore's cultural and financial districts. Yet more is to come, for the latest Urban Redevelopment Authority master plan calls for an exciting rejuvenation of the Singapore River. As a new landmark in its midst, CanningHill Piers is ready to lead the way.

WHY JUST TAKE A WALK WHEN YOU CAN TAKE A LEAF FROM HISTORY

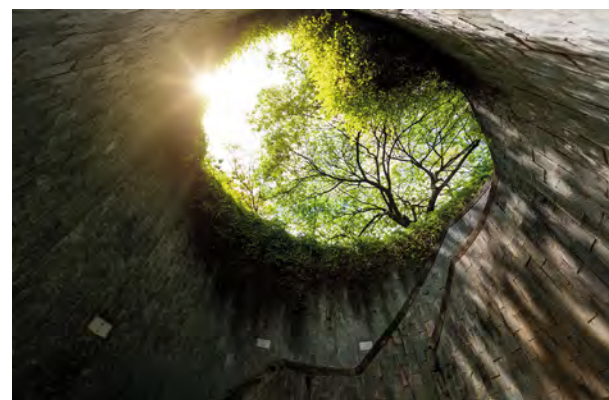


Artist's impression

Across the road from CanningHill Piers stands Fort Canning Hill. No mere park, it has witnessed many historical milestones, being the place from which 14th century royalty once ruled, the site of the original botanical garden set up by Sir Stamford Raffles himself, and also where the British commanded the defence of Singapore in World War II.

Ancient artefacts and historical gardens aside, you are just as likely to come upon lively festivals, concerts and performances. And whether nature lover or fitness buff, the 18 hectares of rolling greens offer you much to explore and conquer.

On top of recent enhancements, there are also plans afoot to turn Fort Canning Hill into a green corridor linking a revitalised Orchard Road to Singapore River, creating a seamless belt of recreation and leisure. Making it entirely possible to take a leisurely stroll starting from your home by the river and find yourself ending up at the Singapore Botanic Gardens, basking in lush greenery every step of the way.



Lovers of nature
will find much to
explore



Let the hillside
greens be Mother
Nature's fitness
circuit



Ancient artefacts
take you back in
time

WITH NEIGHBOURS LIKE THESE, YOU'RE MOST ASSUREDLY IN GOOD COMPANY

You know you have chosen well when all that's exciting in the city is also so close to home. Literally at your doorstep, slake your thirst for life at Clarke Quay, teeming with cafes, bars, clubs and restaurants; Boat Quay and Robertson Quay dazzle with even more choices.

For a dose of arts and culture, turn to the many museums, galleries and theatres of the Civic District. For sartorial inspiration, Orchard Road remains the grand dame of shopping streets on par with the best in the world. Marina Bay Sands and its sophisticated entertainment, luxury ateliers and celebrated restaurants is just minutes away too.

Easily accessible by boat, car or MRT, the Central Business District (CBD) and the Marina Bay Financial District will keep your finger on the pulse of Singapore's economic heart.

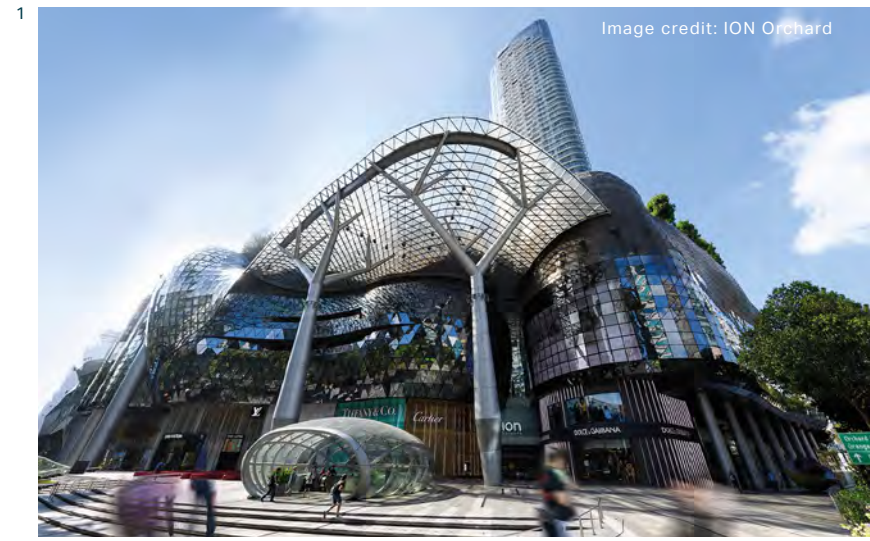


Image credit: ION Orchard

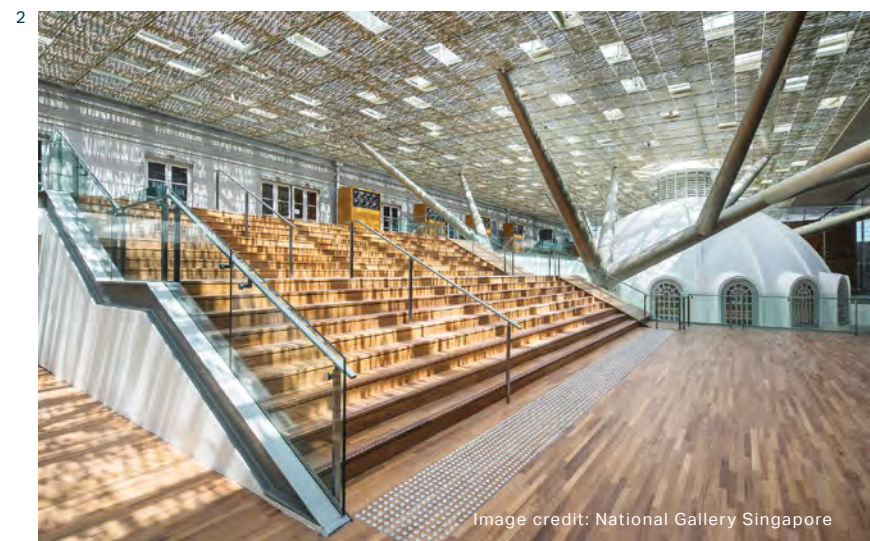
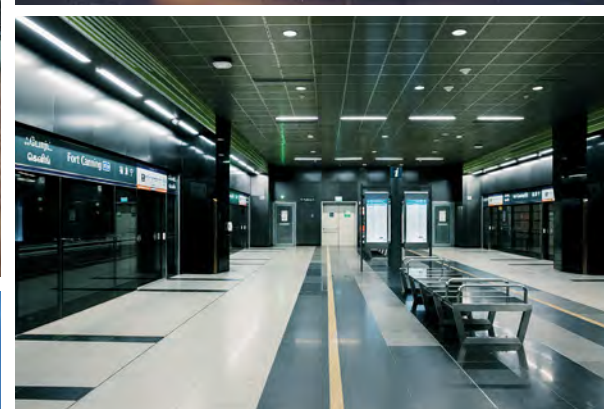
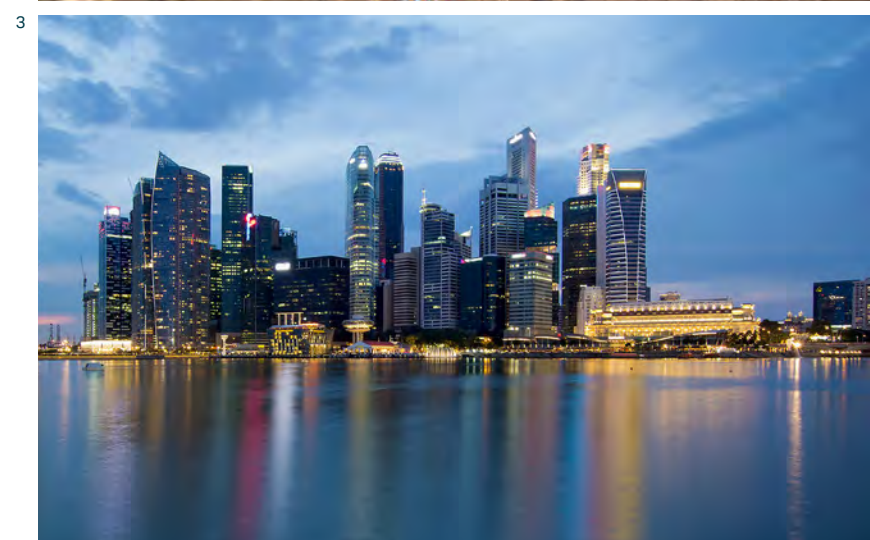


Image credit: National Gallery Singapore



1. Nearby Orchard Road never fails to provide sartorial inspiration
2. Make it a day museum-hopping, starting with the National Gallery just minutes on foot
3. Get down to business at the CBD and the Marina Bay Financial District
4. A year-round lineup of world-class performances at the Esplanade
5. Gourmands will rejoice in the numerous Michelin-starred choices within stone's throw
6. Direct access to Fort Canning MRT (Downtown Line), 8 minutes' walk to Clarke Quay MRT (North East Line)
7. Hail a river taxi right from your doorstep and skip the traffic on the roads



Explore what's around, scan to view Trail Map

WHERE DIFFERENT
POINTS OF VIEW
AGREE
FABULOUSLY



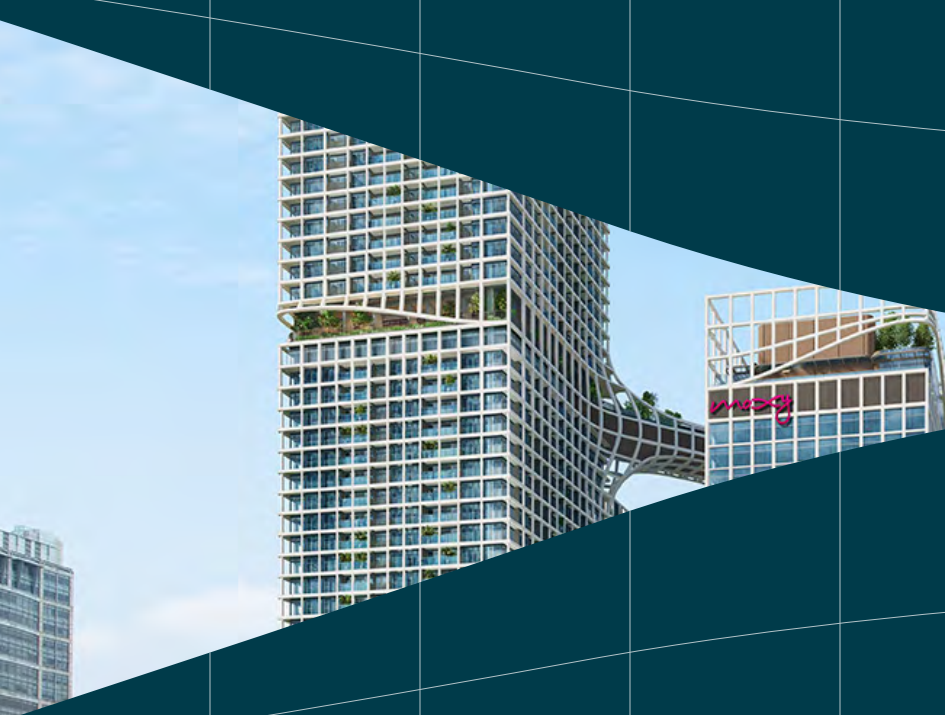
View from actual site,
approx. Level 24

Taking full advantage of its prime location, the views at CanningHill Piers are nothing short of breathtaking. Bask in multiple vistas, from the shimmering waterscapes of Singapore River to the soothing greenscapes of Fort Canning Hill. Looking towards Orchard Road or turning around to take in Marina Bay and the CBD, the cityscapes remind you once more that you are at the heart of it all.

FOR OTHERS,
A GLIMPSE



FOR YOU, A WORLD SET WIDE



For illustration only

Take in the views as you take a dip in the Infinity Lap Pool on Level 24

Artistically draped in an iconic geometric lattice, the towers of CanningHill Piers are unmissable amidst the low-rise shophouses of Clarke Quay. Like the lifting of a veil, the lattice is raised at the upper recreational levels, elevating your rest and relaxation with a dazzling backdrop of the city skyline.



Artist's Impression

THE MOST SCENIC BRIDGE BY THE RIVER MAY JUST BE THE ONE UP IN THE SKY

In a nod to Singapore River and its historical bridges, a spectacular sky bridge takes centre stage here. This veritable slice of heaven spans the two residential towers on Level 24. With a myriad of wellness and relaxation facilities like its multiple pools, yoga deck, meditation room and more, soak in the views as you soak in the sublimity of mid-air tranquillity. Those looking for a more vigorous workout will be pleased to find two gyms, one decked out for cardio exercises and the other for resistance training.



Artist's Impression



For illustration only

Bask in a spaciousness
rare for city homes

MORNING LARK OR NIGHT OWL, THERE'S ROOM FOR YOU AND A VIEW TO MATCH

Wake up to a cityscape gloriously painted by the morning sun. Or stay up with the mesmerising twinkling lights of the river as company. With the two residential towers offering a variety of views and apartment types, your perfect home is waiting for you at CanningHill Piers.

Choose from 1-bedroom to 5-bedroom premium units, expansive sky suites and a super penthouse that is the epitome of exclusivity. Designed for millennial modern living, every apartment is a study in understated elegance, where the smallest details help create a space that is unmistakably luxe and generously welcoming all at once.

Be the consummate host with the Italian-designed and made Ernestomeda kitchen system that rises to every occasion. Designer brand Miele provides the hood, hob and oven, while the integrated fridge and washer-dryer are from De Dietrich. The 1-bedroom, 1-bedroom+study and 3-bedroom premium units also feature a hidden surprise: a versatile pull-out counter that can serve as an extended food preparation area, dining table, or work-from-home station should the need arise.



For illustration only

Space to cook and
entertain in style



For illustration only

Work from home,
elevated

Designer wares
and fittings
create an elegant
oasis of rest



For illustration only

REST COMES EASY

Take it easy with a home that always has your needs in mind. On top of thoughtful layouts that amplify the sense of space, clever design touches give you even more room to play with. In the master bedroom wardrobe, a special compartment holds and organises your accessories so you can compose your outfit of the day with flair.

In that most private of sanctums, sophisticated wares and fittings from premium brands Gessi and Laufen elevate the bathroom from the merely functional to an elegant oasis of rest. Revel in details like the sleek wall-mounted taps and exquisite engineered stone vanities with integrated sink, while ample storage makes room for your luxury toiletries and more. Complete with a deluxe rain shower in the master bath, bath time is set to be your favourite time of the day.



For illustration only

Thoughtful layouts
make room for all that
you love

EVERY NEED ANTICIPATED, EVERY BROW SMOOTHED



Premier Residential Services

Completing your life of ease, our team of Residential Hosts are on hand to provide seamless assistance. From your day-to-day needs such as arranging for laundry and housekeeping, and transport bookings; to special occasions like catering for parties, restaurant reservations, and more* — it's all taken care of.

*Selected services are chargeable. Terms and conditions apply.



Your Future-Ready Home

Outfitted with the Smart HomeHub, your home is poised for the integration of new technologies that make life easier, along with greater peace of mind. Pre-installed with the Smart Home app, the provided Smart Tablet Console puts all your smart home devices at your fingertips. The app can be installed on your mobile device too.

SMART HOME



Smart Air Con

Hot day? Turn on the air conditioning remotely and have the home cooled in preparation for your return.



Smart Lighting

Schedule the lights to come on automatically or check if you have forgotten to turn them off.



Smart Lock

The convenience of locking or unlocking the door remotely. You can also use PIN, biometrics, key or access card.



Smart Video Doorbell

Get notified when someone is at the door, so you can see who is paying a visit or communicate with them.



Smart Surveillance

Select units enjoy the added security of remote surveillance with an IP camera at the private lift lobby.



Smart Siren Alarm

The Smart HomeHub device sounds the alarm in the event of any security breach to deter intruders. You will also receive an alert.



Smart Motion Sensor

Lights up the foyer automatically for a warm welcome home. The lights also come on when intruders are detected.



Smart Smoke Detector

Be promptly alerted so you can call for help if no one is at home to investigate.



Smart Voice Control/Speaker

Handsfree control of your smart home devices. Voice assistant also lets you ask about the news, weather, traffic; set reminders, play music, and more.



Smart Energy Monitoring

Easily keep track of your household electricity consumption to keep up sustainable habits.

SMART COMMUNITY



Smart Booking/Payment

Check on the availability and pay for the booking of facilities. Then check in easily with a QR code.



Smart Parcel

Parcel station sized to accept packages as well as letters, and sends you an alert to retrieve them.



Smart Biometric Access

Enjoy contactless access to lift lobbies and other communal areas with the facial recognition system.



Smart Invite

Pre-register your visitors and generate a QR invite to allow them easy entry to the development.



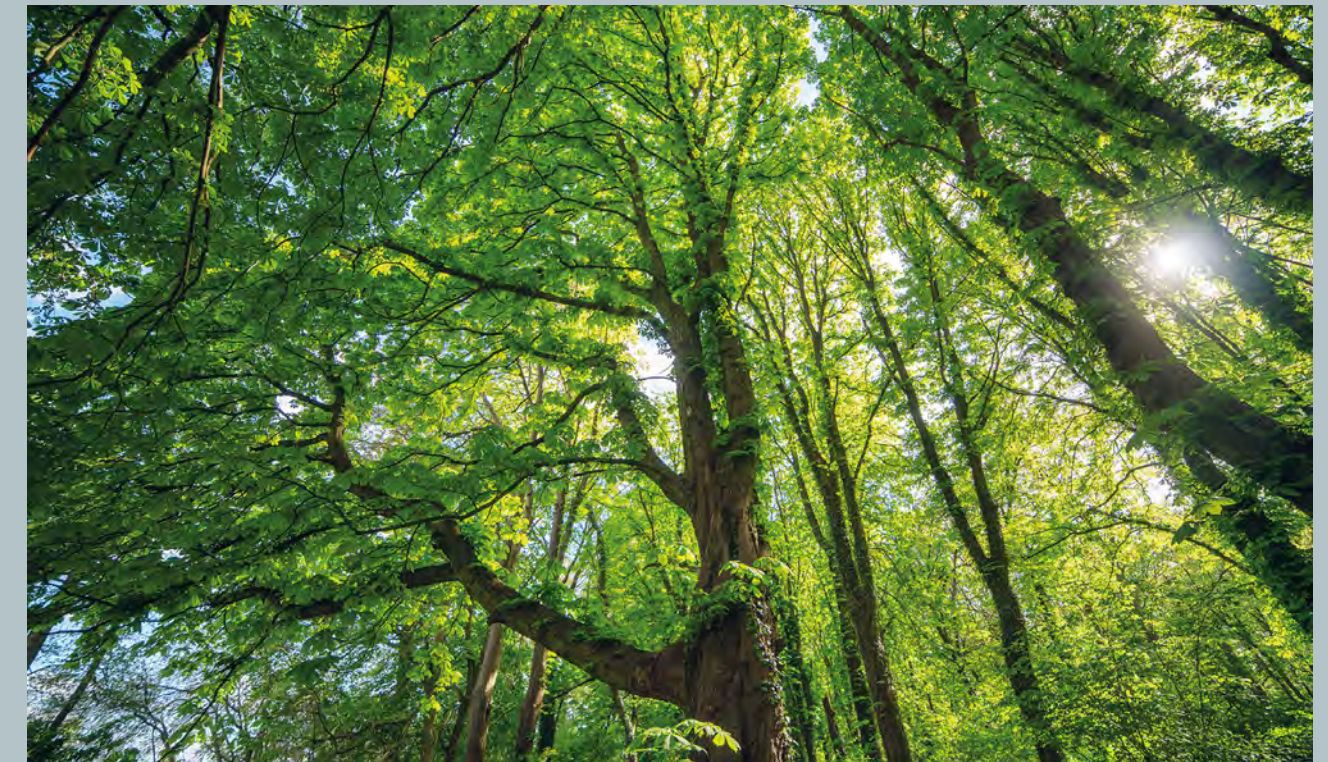
Smart Audio Video Intercom

Lets visitors announce their arrival at the lift lobby so you can let them in with a simple tap.



Smart Car Wash Bay Monitor

Check if the car wash bays are available and minimise time spent waiting for a spot.



GREEN IS THE WAY FORWARD

Awarded the BCA Green Mark Gold^{Plus}, take pleasure in a home that not only affords you all the modern comforts, but does so with your interest and that of the earth at heart.



Energy-Efficient Design

- Building oriented for good natural ventilation in the common areas and residential units
- Building facade designed to reduce solar heat gain
- Residential units have deep recessed balconies and/or deep horizontal ledges which provide shade for the interiors
- Central open air well provides good natural ventilation to the lift lobbies and residential corridors
- Porous building design allows comfortable air movement throughout the development



Energy-Efficient Features

- Energy-efficient air-conditioning system for all residential units
- Energy-efficient lighting design with use of LED lighting and motion sensors at common areas
- Energy-efficient lifts with regenerative drive, VVVF (variable voltage variable frequency) drive and sleep function mode



Water-Efficient Features

- Water-efficient sanitary fittings in all residential units
- Rainwater harvesting for landscape irrigation
- Water-efficient auto-irrigation system for major landscape areas



Environmental Quality And Protection

- Use of environmentally friendly and sustainable materials certified by approved local certification bodies
- Low Volatile Organic Compounds (VOC) paints for all internal walls to ensure healthy indoor air quality
- Landscape and water features at the podium reduce urban heat build-up at the public realm to create a cooler and comfortable environment



Other Green Features

- Smart home with smart community system for residents' comfort and convenience
- Carbon monoxide sensors to modulate car park ventilation
- Provision of bicycle parking lots to promote green transport and healthy lifestyle
- Pneumatic waste collection and disposal system
- Recycling bins for collection of recyclable waste
- Double refuse chutes for recyclable and non-recyclable waste

CHOOSE YOUR LEVEL OF PLEASURE

Variety is the spice of life, and there is so much lined up for your rest and recreation. However you choose to unwind, be it with a vigorous workout or a long soak in the pool, catching up with your friends over the grill or catching up on your reading at an alcove high above the world, there's just the right spot amidst the three levels of facilities. For your peace of mind, the communal areas also feature a host of touch-free amenities, such as auto-open doors and contactless lift call buttons.



L45 CanningHill Sky

L24 CanningHill Club

L3 CanningHill Garden



Two well-appointed
club lounges at your
disposal



An unforgettable
setting for gatherings
and parties

L45
CANNINGHILL
SKY

WELCOME TO YOUR PRIVATE CLUB IN THE SKY

- 01 Sky Deck
- 02 Sky Mist
- 03 Sky Hammocks
- 04 Sky Garden
- 05 Sky Arena
- 06 Sky Club
 - a) Club Lounge 1
 - b) Club Lounge 2
- 07 Sky Retreat



Entertain in style in an unforgettable setting high above the city. From intimate tête-à-têtes to soirées for dozens of guests, the myriad spaces here accommodate all with panache. Conceived as your private club in the sky, the clubhouse gives you the pick of two well-appointed lounges. With a kitchenette as well as an island counter that can be easily transformed into a bar, feel free to bring in your favourite mixologist.

L24
CANNINGHILL
CLUB

SOAK IN THE VIEWS AND THAT TOP OF THE WORLD FEELING

The tranquillity you seek is surprisingly easy to find at this stunning sky bridge. Spanning two towers and filled with wellness and relaxation facilities from end to end, each of its three zones has a distinct theme and distinctive views too.

Start your day with brisk laps in the Infinity Lap Pool, and wind down at the Infinity Lounge Pool come sunset, marvelling at the changing colours of the skies. The Spa Pool and Floating Lounge offer even more therapeutic respite. At the Yoga Deck or the Sky Gym and Power Gym, set your eyes on the horizon and push on to a new record.



Artist's impression

Find yourself lingering
at the Infinity Lounge Pool

Gym or pool, work out to captivating views all around



Gather your friends and family for a good time over good food. The Sky Gourmet dining room is fully equipped with an induction hob, oven, fridge and wine chiller, and ready for your culinary explorations. Or light up the fire over at the Gourmet Grill for a barbecue cookout complete with city views.

The spacious Sky Gourmet easily accommodates your large circle of friends



- SKY OASIS**
- 10 Aqua Terrace
 - 11 Spa Pool
 - 12 Horizon Vista
 - 13 Infinity Lounge Pool
 - 14 Floating Lounge
- HILL RESORT**
- 15 Aqua Lounge
 - 16 Hill Vista Lounge
 - 17 Gourmet Grill
 - 18 Infinity Lap Pool
 - 19 Kids' Pool
 - 20 Residential Services Reception
 - 21 Flexi Lounge
 - 22 Power Gym
 - 23 Sky Gym
 - 24 Sky Gourmet
 - 25 Male Steam Room (With Shower)
 - 26 Female Steam Room (With Shower)



- CITY SANCTUARY**
- 01 Yoga Deck
 - 02 City Vista Lounge
 - 03 Forest Swing
 - 04 Play Mounds
 - 05 Bay Vista Lounge
 - 06 Wellness Room
 - 07 Meditation Room
 - 08 Function Room
 - 09 Flexi Pods

If you need a quiet spot to think or to pen down your thoughts, there's always the Flexi Lounge or the Flexi Pods, both equipped with WiFi and charging points. Housing a co-working space, the Flexi Lounge is also where the Residential Services Reception is located so assistance is readily on hand. On occasions when you need some private time, simply check in to the Flexi Pods designed for privacy and comfort.



An airy co-working space to spark fresh ideas



Conduct your affairs in private at the cosy Flexi Pods



- 01 Hammock Play
- 02 Splash Play
- 03 Balance Walk
- 04 Nest Play
- 05 Rope Climb
- 06 Bouldering Wall
- 07 Ladder Play
- 08 Outdoor Jogging Track

- A Residential Guardhouse (L1)
- B Residential Bin Centre (B1)
- C Common Bin Centre (B1)
- D Residential Genset (B1)
- E Carpark Genset (B1)
- F Residential Carpark Entry/ Exit (L1)
- G Commercial/ Hotel Carpark Entry/ Exit (L1)
- H Main Development Drop-Off (L1)
- I Secondary Drop-Off (L1)

- Residential Water Tank (Roof)
- Residential Substation (B1)
- Carpark Ventilation (L1)
- Carpark Ventilation (L2)
- Serviced Residence Cooling Tower (Roof)
- Hotel Cooling Tower (Roof)

The renderings shown here are for illustrative purposes only. The shading and outline of the unit types only apply to typical units from Level 8 to 23. The boundary lines of the units set out here are not to be taken as a factual representation of the actual units. Kindly refer to the approved building plans for the actual unit outline/boundary lines.

YOUR PERFECT HOME AWAITS

1 CLARKE QUAY, SINGAPORE 179882

UNIT/ FLOOR	01	02	03	04	05	06	07	08	09	10	11
48		AS4(p)	AS3(p)	AS2(p)	BS2(p)	A1(p)	PH1 (#48-08)				
47	SS1(#47-01)	AS4	AS3	AS2	BS2	A1	SS2 (#47-08)				
46	SS1(#46-01)	AS4	AS3	AS2	BS2	A1	SS2 (#46-08)				
CANNINGHILL SKY											
45											
44	EP1	BS1	AS3	AS2	BS2	A1	C1	B1	A3	DP1	
43	EP1	BS1	AS3	AS2	BS2	A1	C1	B1	A3	DP1	
42	EP1	BS1	AS3	AS2	BS2	A1	C1	B1	A3	DP1	
41	EP1	BS1	AS3	AS2	BS2	A1	C1	B1	A3	DP1	
40	EP1	BS1	AS3	AS2	BS2	A1	C1	B1	A3	DP1	
39	EP1	BS1a	AS3a	AS2a	BS2a	A1	C1a	B1	A3	DP1	
38	EP1	BS1a	AS3a	AS2a	BS2a	A1	C1a	B1	A3	DP1	
37	EP1	BS1a	AS3a	AS2a	BS2a	A1	C1a	B1	A3	DP1	
36	EP1	BS1a	AS3a	AS2a	BS2a	A1	C1a	B1	A3	DP1	
35	EP1	BS1a	AS3a	AS2a	BS2a	A1	C1a	B1	A3	DP1	
34	EP1	BS1a	AS3a	AS2a	BS2a	A1	C1a	B1	A3	DP1	
33	EP1	BS1a	AS3a	AS2a	BS2a	A1	C1a	B1	A3	DP1	
32	EP1	BS1a	AS3a	AS2a	BS2a	A1	C1a	B1	A3	DP1	
31	EP1	BS1a	AS3a	AS2a	BS2a	A1	C1a	B1	A3	DP1	
30	EP1	BS1a	AS3a	AS2a	BS2a	A1	C1a	B1	A3	DP1	
29	EP1	BS1a	AS3a	AS2a	BS2a	A1	C1a	B1	A3	DP1	
28	EP1	BS1a	AS3a	AS2a	BS2a	A1	C1a	B1	A3	DP1	
27	EP1	BS1a	AS3a	AS2a	BS2a	A1	C1a	B1	A3	DP1	
26	EP1	BS1a	AS3a	AS2a	BS2a	A1	C1a	B1	A3	DP1	
25	EP1	BS1a	AS3a	AS2a	BS2a	A1	C1a	B1	A3	DP1	
CANNINGHILL CLUB											
24											
23	DP2(p)	BS1a(p)	AS3a(p)	AS2a(p)	BS2a(p)	A1(p)	B1(S)	AS5	A3	AS7	DP3(p)
22	DP2	BS1a	AS3a	AS2a	BS2a	A1	B1(S)	AS5	A3	AS7	DP3
21	DP2	BS1a	AS3a	AS2a	BS2a	A1	B1(S)	AS5	A3	AS7	DP3
20	DP2	BS1a	AS3a	AS2a	BS2a	A1	B1(S)	AS5	A3	AS7	DP3
19	DP2	BS1a	AS3a	AS2a	BS2a	A1	B1(S)	AS5	A3	AS7	DP3
18	DP2	BS1a	AS3a	AS2a	BS2a	A1	B1(S)	AS5	A3	AS7	DP3
17	DP2	BS1a	AS3a	AS2a	BS2a	A1	B1(S)	AS5	A3	AS7	DP3
16	DP2	BS1a	AS3a	AS2a	BS2a	A1	B1(S)	AS5	A3	AS7	DP3
15	DP2	BS1a	AS3a	AS2a	BS2a	A1	B1(S)	AS5	A3	AS7	DP3
14	DP2	BS1a	AS3a	AS2a	BS2a	A1	B1(S)	AS5	A3	AS7	DP3
13	DP2	BS1a	AS3a	AS2a	BS2a	A1	B1(S)	AS5	A3	AS7	DP3
12	DP2	BS1a	AS3a	AS2a	BS2a	A1	B1(S)	AS5	A3	AS7	DP3
11	DP2	BS1a	AS3a	AS2a	BS2a	A1	B1(S)	AS5	A3	AS7	DP3
10	DP2	BS1a	AS3a	AS2a	BS2a	A1	B1(S)	AS5	A3	AS7	DP3
09	DP2	BS1a	AS3a	AS2a	BS2a	A1	B1(S)	AS5	A3	AS7	DP3
08	DP2	BS1a	AS3a	AS2a	BS2a	A1	B1(S)	AS5	A3	AS7	DP3
07	DP2	BS1a	AS3a	AS2a	BS2a	A1	B1(S)	AS5	A3	AS7	DP3
06	DP2	BS1a	AS3a	AS2a	BS2a	A1	B1(S)	AS5	A3	AS7	DP3
05	DP2	BS1a	AS3a	AS2a	BS2a	A1	B1(S)	AS5	A3	AS7	DP3
04	DP2	BS1a	AS3a	AS2a	BS2a	A1	B1(S)	AS5	A3	AS7	DP3
CANNINGHILL GARDEN											
03											

L3
CANNINGHILL
GARDEN

ALL-WEATHER FUN FOR ALL IN THE FAMILY

With its rugged landscaping and open-air fitness facilities, catch some Vitamin D as you catch your breath in between exercises here. Test your limits at the Bouldering Wall or the Rope Climb, beat the clock at the Outdoor Jogging Track. Get the kids in on the action too and swap their e-games for some healthy fun, for which child could resist some Splash Play?

Run for leisure or get competitive at the 300-metre Outdoor Jogging Track



Myriad rugged facilities for those who relish a challenge

5 CLARKE QUAY, SINGAPORE 179884

UNIT/ FLOOR	15	16	17	18	19	20	21	22	23	24	25	26	27	UNIT/ FLOOR
CANNINGHILL CLUB														
24														24
23	AS1	AS6	AS8	AS2c	AS2b	C3	BS5	C2	CP1	BS3	BS4	BS6	A2	23
22	AS1	AS6	AS8	AS2c	AS2b	C3	BS5	C2	CP1	BS3	BS4	BS6	A2	22
21	AS1	AS6	AS8	AS2c	AS2b	C3	BS5	C2	CP1	BS3	BS4	BS6	A2	21
20	AS1	AS6	AS8	AS2c	AS2b	C3	BS5	C2	CP1	BS3	BS4	BS6	A2	20
19	AS1	AS6	AS8	AS2c	AS2b	C3	BS5	C2	CP1	BS3	BS4	BS6	A2	19
18	AS1	AS6	AS8	AS2c	AS2b	C3	BS5	C2	CP1	BS3	BS4	BS6	A2	18
17	AS1	AS6	AS8	AS2c	AS2b	C3	BS5	C2	CP1	BS3	BS4	BS6	A2	17
16	AS1	AS6	AS8	AS2c	AS2b	C3	BS5	C2	CP1	BS3	BS4	BS6	A2	16
15	AS1	AS6	AS8	AS2c	AS2b	C3	BS5	C2	CP1	BS3	BS4	BS6	A2	15
14	AS1	AS6	AS8	AS2c	AS2b	C3	BS5	C2	CP1	BS3	BS4	BS6	A2	14
13	AS1	AS6	AS8	AS2c	AS2b	C3	BS5	C2	CP1	BS3	BS4	BS6	A2	13
12	AS1	AS6	AS8	AS2c	AS2b	C3	BS5	C2	CP1	BS3	BS4	BS6	A2	12
11	AS1	AS6	AS8	AS2c	AS2b	C3	BS5	C2	CP1	BS3	BS4	BS6	A2	11
10	AS1	AS6	AS8	AS2c	AS2b	C3	BS5	C2	CP1	BS3	BS4	BS6	A2	10
09	AS1	AS6	AS8	AS2c	AS2b	C3	BS5	C2	CP1	BS3	BS4	BS6	A2	09
08	AS1	AS6	AS8	AS2c	AS2b	C3	BS5	C2	CP1	BS3	BS4	BS6	A2	08
07	AS1	AS6	AS8	AS2c	AS2b	C3	BS5	C2	CP1	BS3	BS4	BS6		07
06	AS1	AS6	AS8	AS2c	AS2b	C3	BS5	C2	CP1	BS3	BS4	BS6		06
05	AS1	AS6	AS8	AS2c	AS2b	C3	BS5	C2	CP1	BS3	BS4	BS6		05
04	AS1	AS6	AS8	AS2c	AS2b	C3	BS5	C2	CP1	BS3	BS4	BS6		04
CANNINGHILL GARDEN														

- 1-BEDROOM
- 2-BEDROOM
- 2-BEDROOM + STUDY
- 3-BEDROOM
- 4-BEDROOM PREMIUM
- SKY SUITE
- 1-BEDROOM + STUDY
- 2-BEDROOM + ENSUITE STUDY
- 3-BEDROOM PREMIUM
- 5-BEDROOM PREMIUM
- SUPER PENTHOUSE

For actual unit orientation and stacking, please refer to storey key plans.



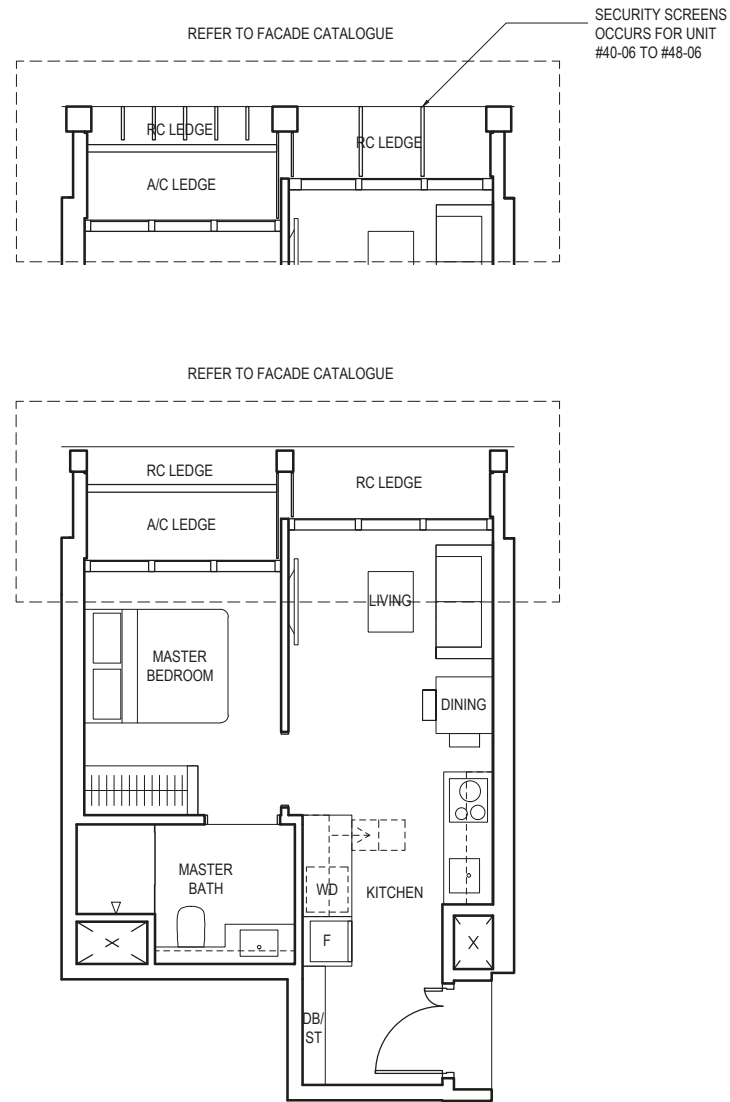
Scan to view
Facade
Catalogue and
Specifications

1-BEDROOM

TYPE A1

38 sq m / 409 sq ft

BLK 1
 #04-06 to #22-06
 #25-06 to #44-06
 #46-06 to #47-06



LEGEND (WHERE APPLICABLE)
 DB Distribution Board WD Washer cum Dryer W/D Washer and Dryer F Fridge DW Dishwasher WIW Walk-In Wardrobe
 WC Water Closet ST Storage HS Household Shelter TB Tallboy CH Wine Chiller

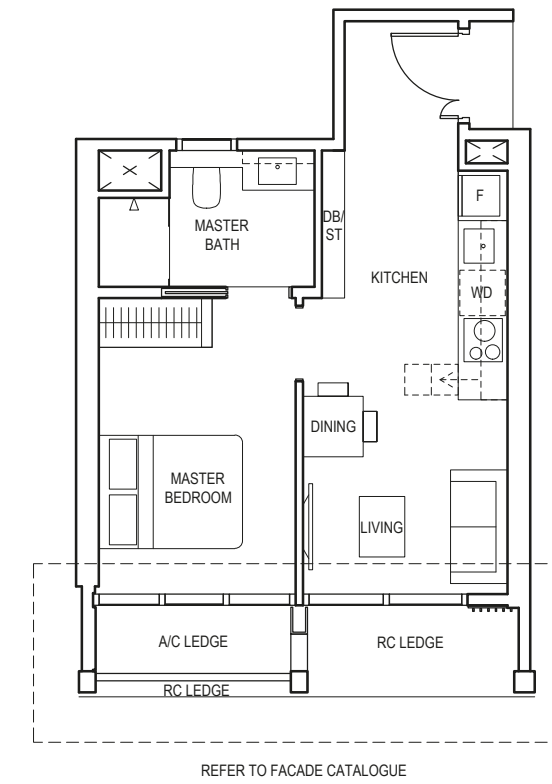
Area includes air-con (a/c) ledge, balcony and void where applicable. Please refer to the keyplan for orientation. The plans are subjected to change as may be approved by relevant authorities. All floor plans are approximate measurements only and are subjected to government re-survey. The balcony shall not be enclosed unless with the approved balcony screen. For an illustration of the approved balcony screen, please refer to the diagram annexed hereto as "Annexure A".

1-BEDROOM

TYPE A2

41 sq m / 441 sq ft

BLK 5
 #08-27 to #23-27



LEGEND (WHERE APPLICABLE)
 DB Distribution Board WD Washer cum Dryer W/D Washer and Dryer F Fridge DW Dishwasher WIW Walk-In Wardrobe
 WC Water Closet ST Storage HS Household Shelter TB Tallboy CH Wine Chiller

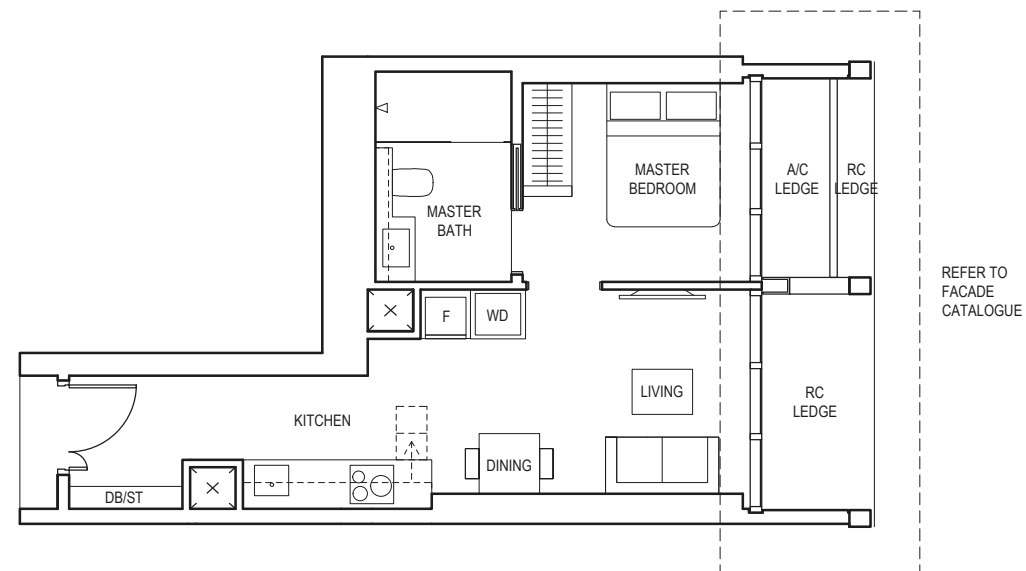
Area includes air-con (a/c) ledge, balcony and void where applicable. Please refer to the keyplan for orientation. The plans are subjected to change as may be approved by relevant authorities. All floor plans are approximate measurements only and are subjected to government re-survey. The balcony shall not be enclosed unless with the approved balcony screen. For an illustration of the approved balcony screen, please refer to the diagram annexed hereto as "Annexure A".

1-BEDROOM

TYPE A3

43 sq m / 463 sq ft

BLK 1
#04-09 to #23-09
#25-09 to #44-09



LEGEND (WHERE APPLICABLE)
DB Distribution Board **WD** Washer cum Dryer **WD** Washer and Dryer **F** Fridge **DW** Dishwasher **WIW** Walk-In Wardrobe
WC Water Closet **ST** Storage **HS** Household Shelter **TB** Tallboy **CH** Wine Chiller

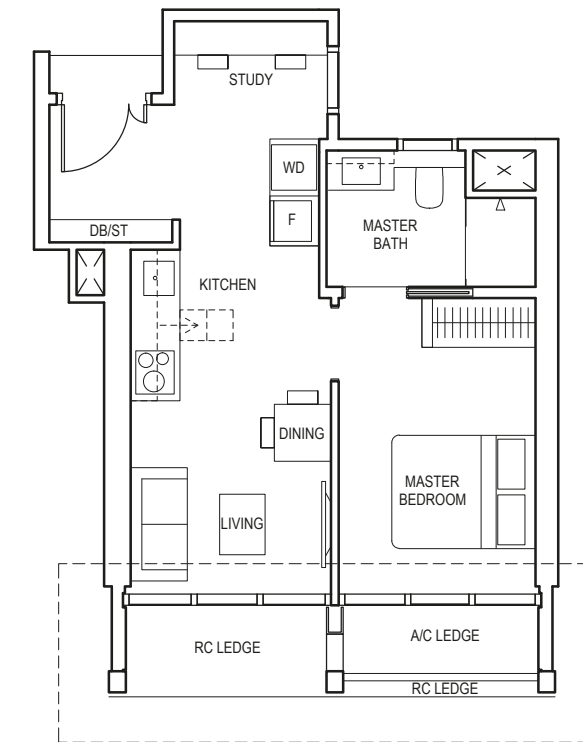
Area includes air-con (a/c) ledge, balcony and void where applicable. Please refer to the keyplan for orientation. The plans are subjected to change as may be approved by relevant authorities. All floor plans are approximate measurements only and are subjected to government re-survey. The balcony shall not be enclosed unless with the approved balcony screen. For an illustration of the approved balcony screen, please refer to the diagram annexed hereto as "Annexure A".

1-BEDROOM + STUDY

TYPE AS1

44 sq m / 474 sq ft

BLK 5
#04-15 to #23-15



LEGEND (WHERE APPLICABLE)
DB Distribution Board **WD** Washer cum Dryer **WD** Washer and Dryer **F** Fridge **DW** Dishwasher **WIW** Walk-In Wardrobe
WC Water Closet **ST** Storage **HS** Household Shelter **TB** Tallboy **CH** Wine Chiller

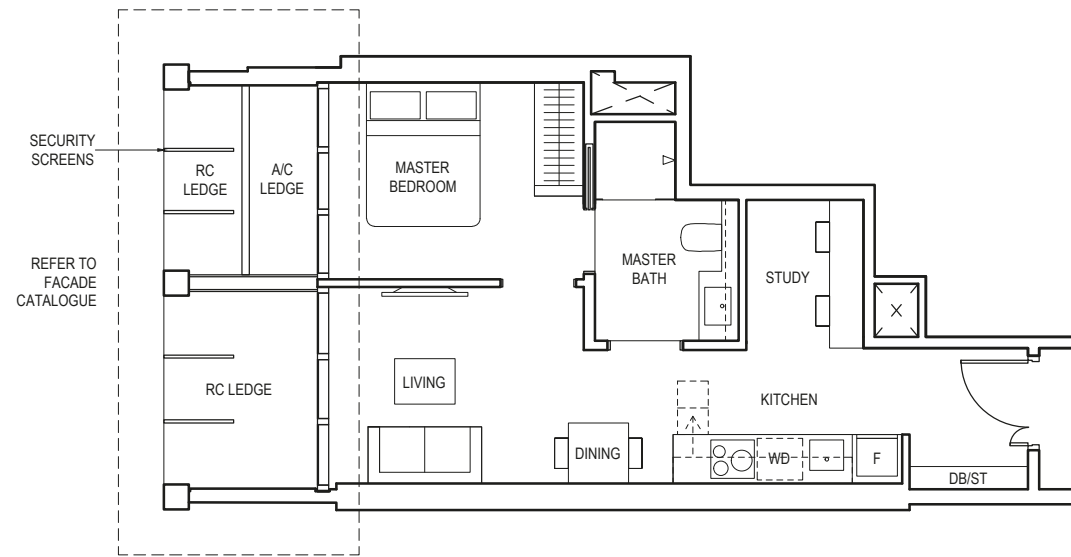
Area includes air-con (a/c) ledge, balcony and void where applicable. Please refer to the keyplan for orientation. The plans are subjected to change as may be approved by relevant authorities. All floor plans are approximate measurements only and are subjected to government re-survey. The balcony shall not be enclosed unless with the approved balcony screen. For an illustration of the approved balcony screen, please refer to the diagram annexed hereto as "Annexure A".

1-BEDROOM + STUDY

TYPE AS2

45 sq m / 484 sq ft

BLK 1
#40-04 to #44-04
#46-04 to #47-04



LEGEND (WHERE APPLICABLE)
DB Distribution Board WD Washer cum Dryer W/D Washer and Dryer F Fridge DW Dishwasher WIW Walk-In Wardrobe
WC Water Closet ST Storage HS Household Shelter TB Tallboy CH Wine Chiller

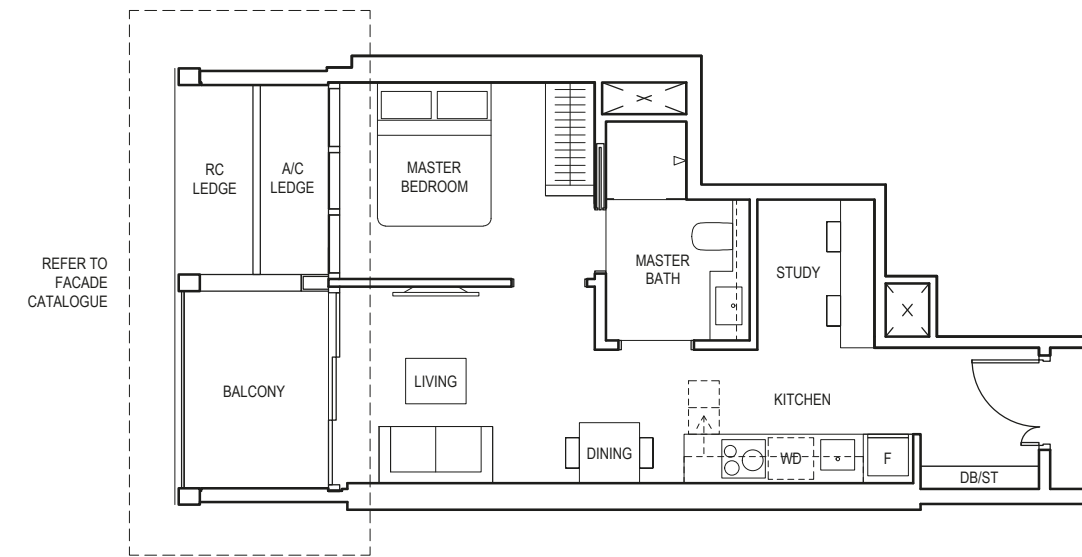
Area includes air-con (a/c) ledge, balcony and void where applicable. Please refer to the keyplan for orientation. The plans are subjected to change as may be approved by relevant authorities. All floor plans are approximate measurements only and are subjected to government re-survey. The balcony shall not be enclosed unless with the approved balcony screen. For an illustration of the approved balcony screen, please refer to the diagram annexed hereto as "Annexure A".

1-BEDROOM + STUDY

TYPE AS2a

50 sq m / 538 sq ft

BLK 1
#04-04 to #22-04
#25-04 to #39-04



LEGEND (WHERE APPLICABLE)
DB Distribution Board WD Washer cum Dryer W/D Washer and Dryer F Fridge DW Dishwasher WIW Walk-In Wardrobe
WC Water Closet ST Storage HS Household Shelter TB Tallboy CH Wine Chiller

Area includes air-con (a/c) ledge, balcony and void where applicable. Please refer to the keyplan for orientation. The plans are subjected to change as may be approved by relevant authorities. All floor plans are approximate measurements only and are subjected to government re-survey. The balcony shall not be enclosed unless with the approved balcony screen. For an illustration of the approved balcony screen, please refer to the diagram annexed hereto as "Annexure A".

TYPE AS2a(p)

50 sq m / 538 sq ft

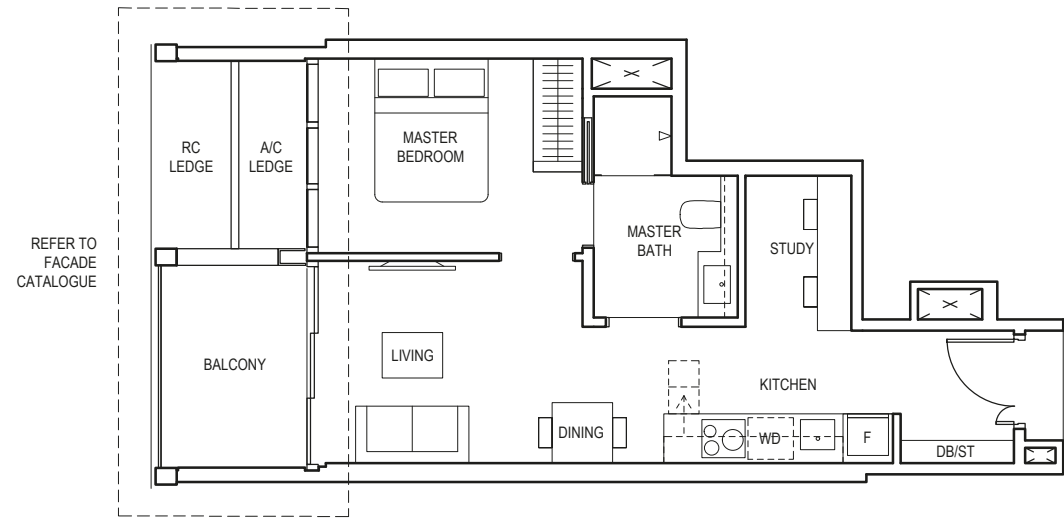
BLK 1
#23-04

1-BEDROOM + STUDY

TYPE AS2b

50 sq m / 538 sq ft

BLK 5
#04-19 to #23-19



LEGEND (WHERE APPLICABLE)
DB Distribution Board **WD** Washer cum Dryer **WD** Washer and Dryer **F** Fridge **DW** Dishwasher **WIW** Walk-In Wardrobe
WC Water Closet **ST** Storage **HS** Household Shelter **TB** Tallboy **CH** Wine Chiller

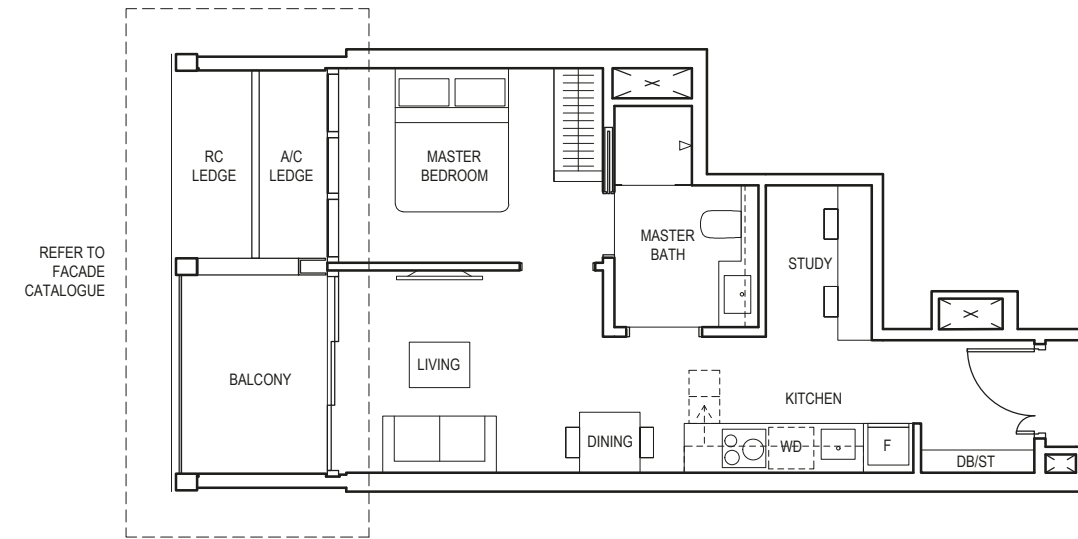
Area includes air-con (a/c) ledge, balcony and void where applicable. Please refer to the keyplan for orientation. The plans are subjected to change as may be approved by relevant authorities. All floor plans are approximate measurements only and are subjected to government re-survey. The balcony shall not be enclosed unless with the approved balcony screen. For an illustration of the approved balcony screen, please refer to the diagram annexed hereto as "Annexure A".

1-BEDROOM + STUDY

TYPE AS2c

50 sq m / 538 sq ft

BLK 5
#04-18 to #23-18



LEGEND (WHERE APPLICABLE)
DB Distribution Board **WD** Washer cum Dryer **WD** Washer and Dryer **F** Fridge **DW** Dishwasher **WIW** Walk-In Wardrobe
WC Water Closet **ST** Storage **HS** Household Shelter **TB** Tallboy **CH** Wine Chiller

Area includes air-con (a/c) ledge, balcony and void where applicable. Please refer to the keyplan for orientation. The plans are subjected to change as may be approved by relevant authorities. All floor plans are approximate measurements only and are subjected to government re-survey. The balcony shall not be enclosed unless with the approved balcony screen. For an illustration of the approved balcony screen, please refer to the diagram annexed hereto as "Annexure A".

1-BEDROOM + STUDY

TYPE AS3

45 sq m / 484 sq ft

BLK 1
#40-03 to #44-03
#46-03 to #47-03

TYPE AS3(p)

45 sq m / 484 sq ft

BLK 1
#48-03

1-BEDROOM + STUDY

TYPE AS3a

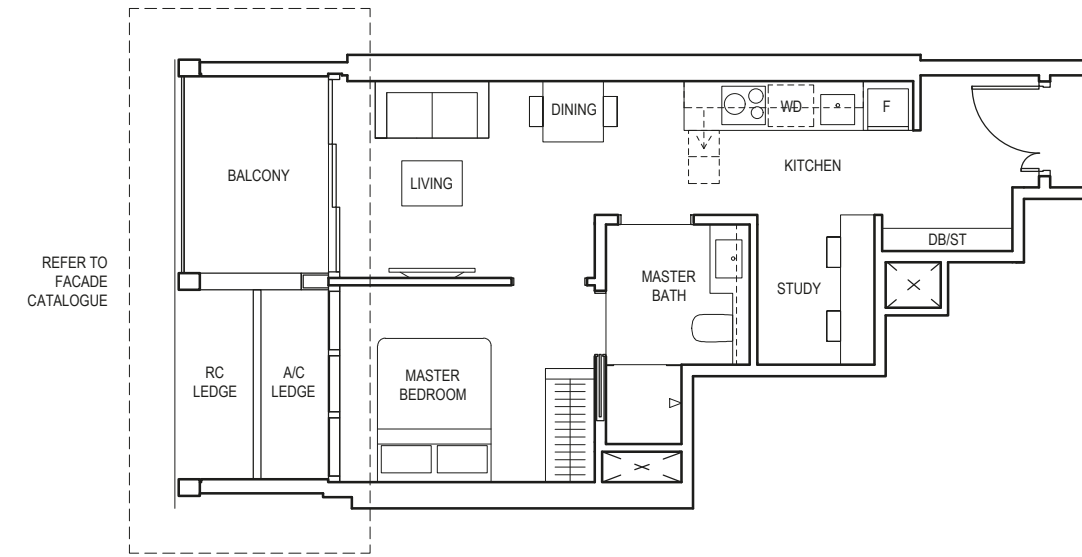
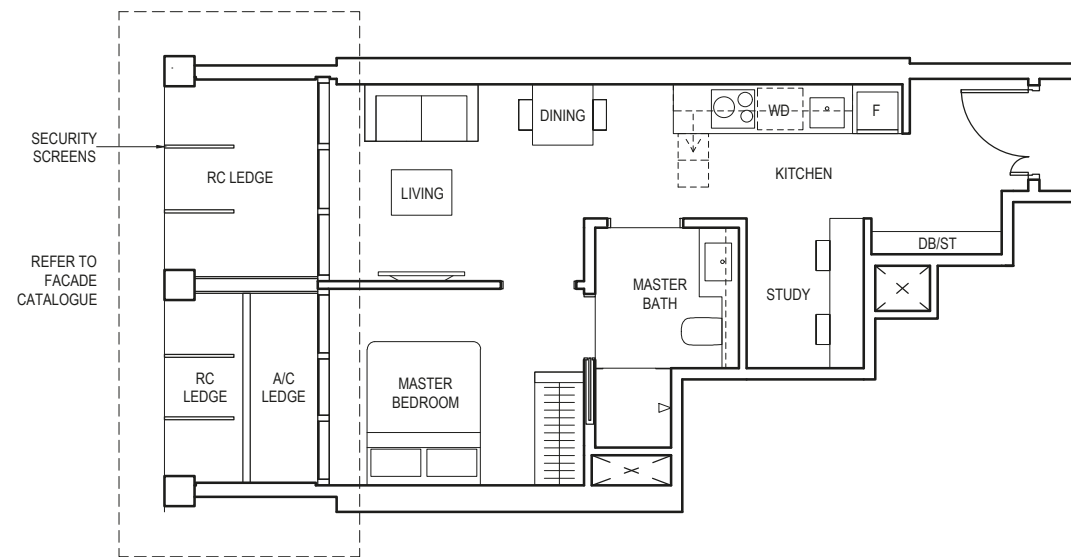
51 sq m / 549 sq ft

BLK 1
#04-03 to #22-03
#25-03 to #39-03

TYPE AS3a(p)

51 sq m / 549 sq ft

BLK 1
#23-03



LEGEND (WHERE APPLICABLE)
DB Distribution Board **WD** Washer cum Dryer **W/D** Washer and Dryer **F** Fridge **DW** Dishwasher **WIW** Walk-In Wardrobe
WC Water Closet **ST** Storage **HS** Household Shelter **TB** Tallboy **CH** Wine Chiller

Area includes air-con (a/c) ledge, balcony and void where applicable. Please refer to the keyplan for orientation. The plans are subjected to change as may be approved by relevant authorities. All floor plans are approximate measurements only and are subjected to government re-survey. The balcony shall not be enclosed unless with the approved balcony screen. For an illustration of the approved balcony screen, please refer to the diagram annexed hereto as "Annexure A".



LEGEND (WHERE APPLICABLE)
DB Distribution Board **WD** Washer cum Dryer **W/D** Washer and Dryer **F** Fridge **DW** Dishwasher **WIW** Walk-In Wardrobe
WC Water Closet **ST** Storage **HS** Household Shelter **TB** Tallboy **CH** Wine Chiller

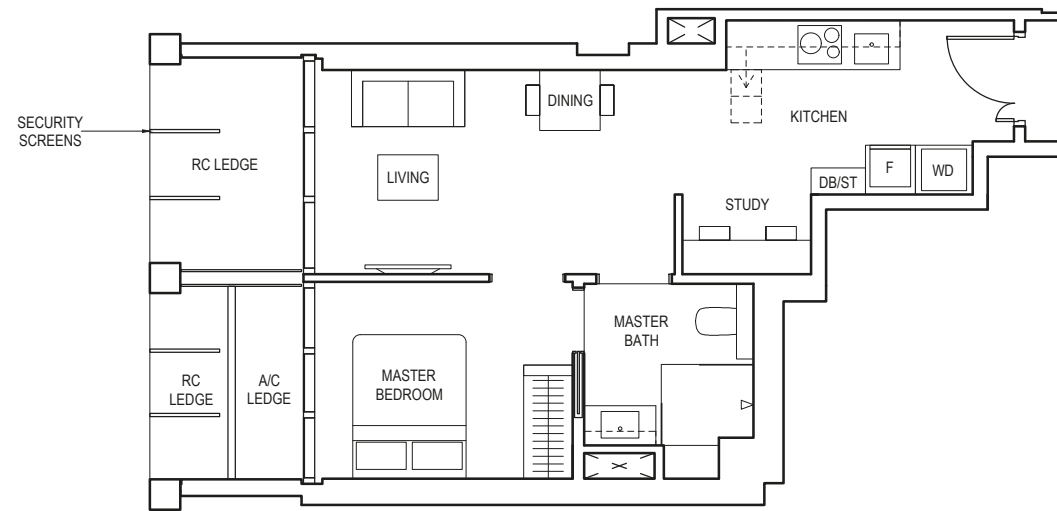
Area includes air-con (a/c) ledge, balcony and void where applicable. Please refer to the keyplan for orientation. The plans are subjected to change as may be approved by relevant authorities. All floor plans are approximate measurements only and are subjected to government re-survey. The balcony shall not be enclosed unless with the approved balcony screen. For an illustration of the approved balcony screen, please refer to the diagram annexed hereto as "Annexure A".

1-BEDROOM + STUDY

TYPE AS4

47 sq m / 506 sq ft

BLK 1
#46-02 to #47-02



LEGEND (WHERE APPLICABLE)
DB Distribution Board **WD** Washer cum Dryer **W/D** Washer and Dryer **F** Fridge **DW** Dishwasher **WIW** Walk-In Wardrobe
WC Water Closet **ST** Storage **HS** Household Shelter **TB** Tallboy **CH** Wine Chiller

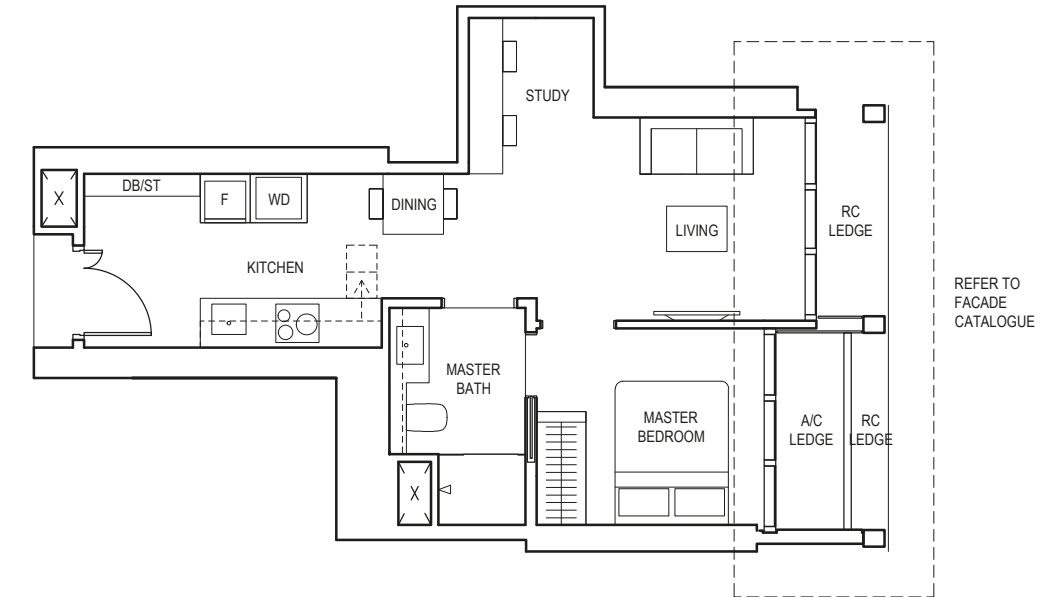
Area includes air-con (a/c) ledge, balcony and void where applicable. Please refer to the keyplan for orientation. The plans are subjected to change as may be approved by relevant authorities. All floor plans are approximate measurements only and are subjected to government re-survey. The balcony shall not be enclosed unless with the approved balcony screen. For an illustration of the approved balcony screen, please refer to the diagram annexed hereto as "Annexure A".

1-BEDROOM + STUDY

TYPE AS5

47 sq m / 506 sq ft

BLK 1
#04-08 to #23-08



LEGEND (WHERE APPLICABLE)
DB Distribution Board **WD** Washer cum Dryer **W/D** Washer and Dryer **F** Fridge **DW** Dishwasher **WIW** Walk-In Wardrobe
WC Water Closet **ST** Storage **HS** Household Shelter **TB** Tallboy **CH** Wine Chiller

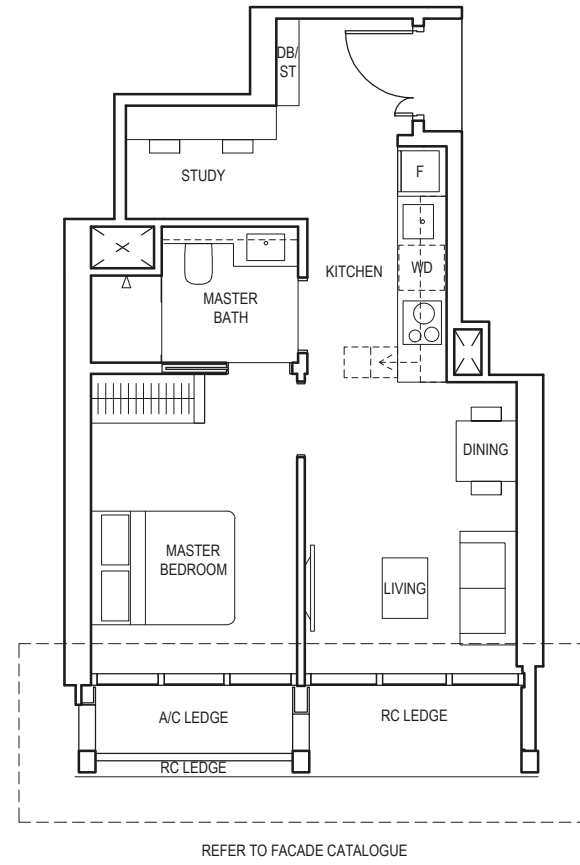
Area includes air-con (a/c) ledge, balcony and void where applicable. Please refer to the keyplan for orientation. The plans are subjected to change as may be approved by relevant authorities. All floor plans are approximate measurements only and are subjected to government re-survey. The balcony shall not be enclosed unless with the approved balcony screen. For an illustration of the approved balcony screen, please refer to the diagram annexed hereto as "Annexure A".

1-BEDROOM + STUDY

TYPE AS6

47 sq m / 506 sq ft

BLK 5
#04-16 to #23-16



LEGEND (WHERE APPLICABLE)
DB Distribution Board **WD** Washer cum Dryer **W/D** Washer and Dryer **F** Fridge **DW** Dishwasher **WIW** Walk-In Wardrobe
WC Water Closet **ST** Storage **HS** Household Shelter **TB** Tallboy **CH** Wine Chiller

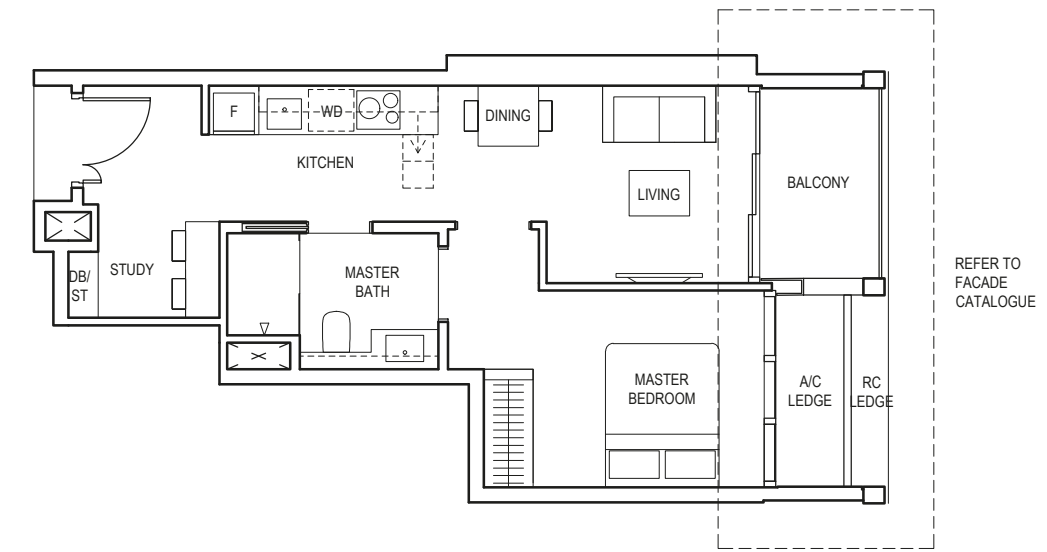
Area includes air-con (a/c) ledge, balcony and void where applicable. Please refer to the keyplan for orientation. The plans are subjected to change as may be approved by relevant authorities. All floor plans are approximate measurements only and are subjected to government re-survey. The balcony shall not be enclosed unless with the approved balcony screen. For an illustration of the approved balcony screen, please refer to the diagram annexed hereto as "Annexure A".

1-BEDROOM + STUDY

TYPE AS7

50 sq m / 538 sq ft

BLK 1
#04-10 to #23-10



LEGEND (WHERE APPLICABLE)
DB Distribution Board **WD** Washer cum Dryer **W/D** Washer and Dryer **F** Fridge **DW** Dishwasher **WIW** Walk-In Wardrobe
WC Water Closet **ST** Storage **HS** Household Shelter **TB** Tallboy **CH** Wine Chiller

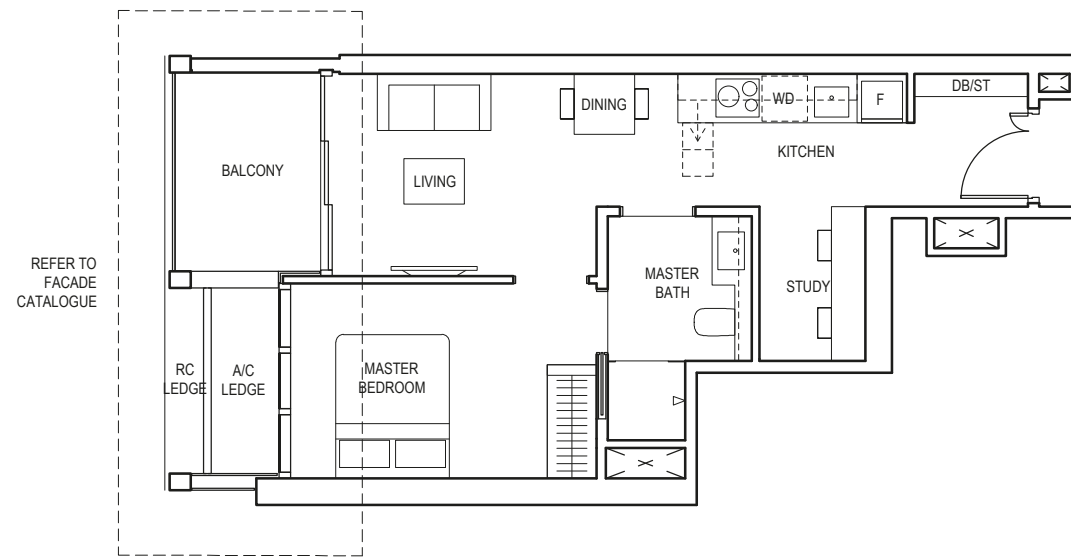
Area includes air-con (a/c) ledge, balcony and void where applicable. Please refer to the keyplan for orientation. The plans are subjected to change as may be approved by relevant authorities. All floor plans are approximate measurements only and are subjected to government re-survey. The balcony shall not be enclosed unless with the approved balcony screen. For an illustration of the approved balcony screen, please refer to the diagram annexed hereto as "Annexure A".

1-BEDROOM + STUDY

TYPE AS8

52 sq m / 560 sq ft

BLK 5
#04-17 to #23-17



LEGEND (WHERE APPLICABLE)
 DB Distribution Board WD Washer cum Dryer W/D Washer and Dryer F Fridge DW Dishwasher WIW Walk-In Wardrobe
 WC Water Closet ST Storage HS Household Shelter TB Tallboy CH Wine Chiller

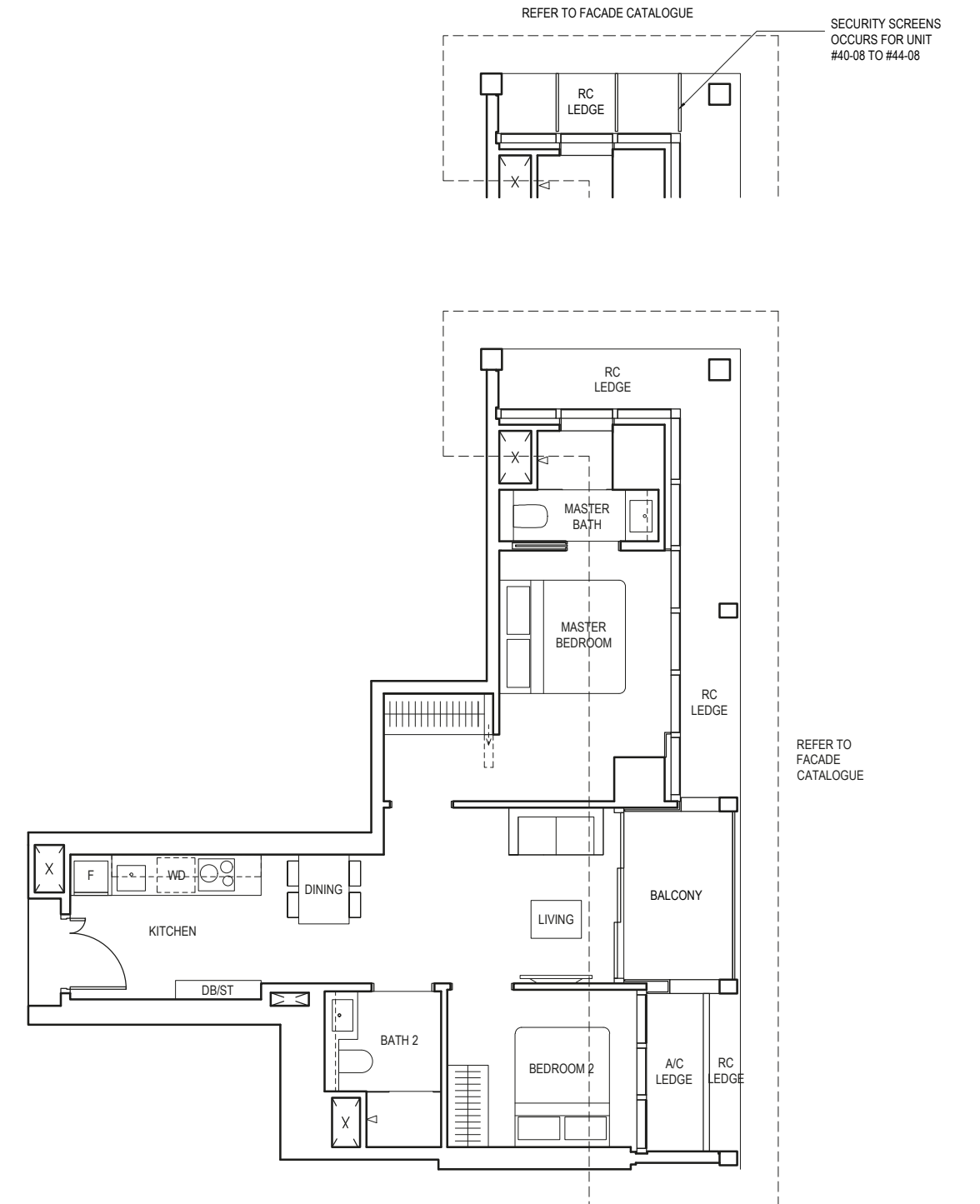
Area includes air-con (a/c) ledge, balcony and void where applicable. Please refer to the keyplan for orientation. The plans are subjected to change as may be approved by relevant authorities. All floor plans are approximate measurements only and are subjected to government re-survey. The balcony shall not be enclosed unless with the approved balcony screen. For an illustration of the approved balcony screen, please refer to the diagram annexed hereto as "Annexure A".

2-BEDROOM

TYPE B1

68 sq m / 732 sq ft

BLK 1
#25-08 to #44-08



LEGEND (WHERE APPLICABLE)
 DB Distribution Board WD Washer cum Dryer W/D Washer and Dryer F Fridge DW Dishwasher WIW Walk-In Wardrobe
 WC Water Closet ST Storage HS Household Shelter TB Tallboy CH Wine Chiller

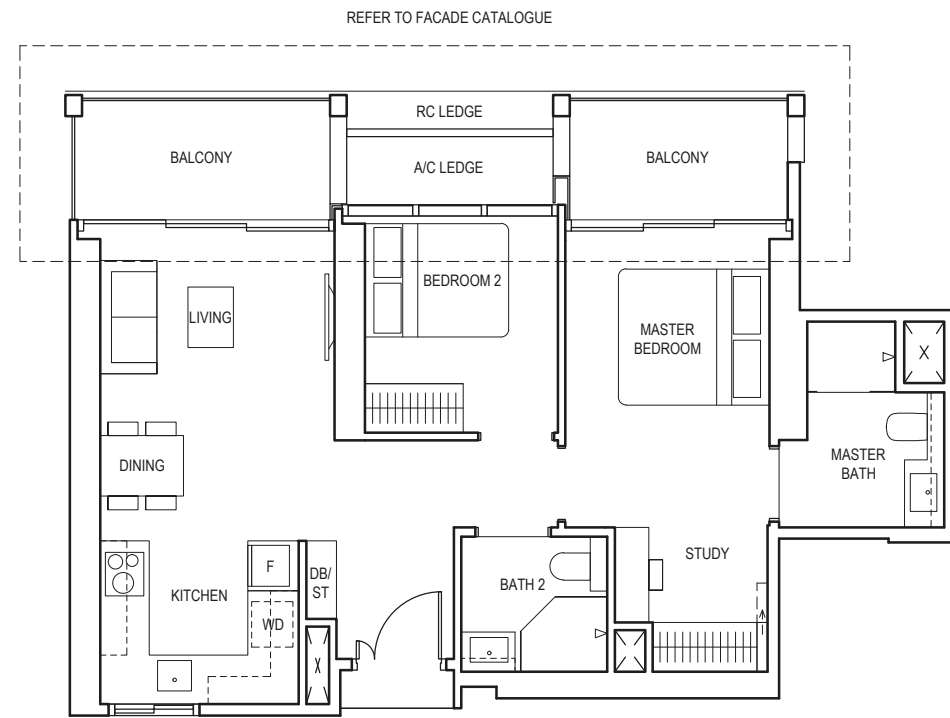
Area includes air-con (a/c) ledge, balcony and void where applicable. Please refer to the keyplan for orientation. The plans are subjected to change as may be approved by relevant authorities. All floor plans are approximate measurements only and are subjected to government re-survey. The balcony shall not be enclosed unless with the approved balcony screen. For an illustration of the approved balcony screen, please refer to the diagram annexed hereto as "Annexure A".

2-BEDROOM + ENSUITE STUDY

TYPE B1(S)

77 sq m / 829 sq ft

BLK 1
#04-07 to #23-07



LEGEND (WHERE APPLICABLE)
DB Distribution Board **WD** Washer cum Dryer **WD** Washer and Dryer **F** Fridge **DW** Dishwasher **WIW** Walk-In Wardrobe
WC Water Closet **ST** Storage **HS** Household Shelter **TB** Tallboy **CH** Wine Chiller

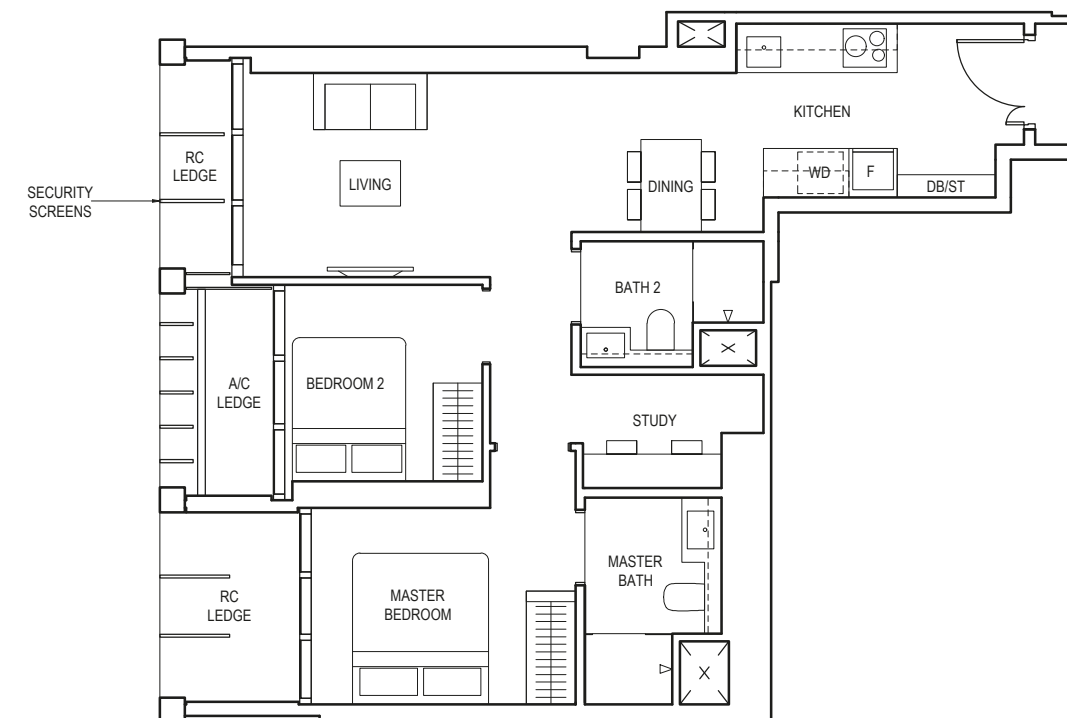
Area includes air-con (a/c) ledge, balcony and void where applicable. Please refer to the keyplan for orientation. The plans are subjected to change as may be approved by relevant authorities. All floor plans are approximate measurements only and are subjected to government re-survey. The balcony shall not be enclosed unless with the approved balcony screen. For an illustration of the approved balcony screen, please refer to the diagram annexed hereto as "Annexure A".

2-BEDROOM + STUDY

TYPE BS1

68 sq m / 732 sq ft

BLK 1
#40-02 to #44-02



LEGEND (WHERE APPLICABLE)
DB Distribution Board **WD** Washer cum Dryer **WD** Washer and Dryer **F** Fridge **DW** Dishwasher **WIW** Walk-In Wardrobe
WC Water Closet **ST** Storage **HS** Household Shelter **TB** Tallboy **CH** Wine Chiller

Area includes air-con (a/c) ledge, balcony and void where applicable. Please refer to the keyplan for orientation. The plans are subjected to change as may be approved by relevant authorities. All floor plans are approximate measurements only and are subjected to government re-survey. The balcony shall not be enclosed unless with the approved balcony screen. For an illustration of the approved balcony screen, please refer to the diagram annexed hereto as "Annexure A".

2-BEDROOM + STUDY

TYPE BS1a

76 sq m / 818 sq ft

BLK 1
#04-02 to #22-02
#25-02 to #39-02



LEGEND (WHERE APPLICABLE)
 DB Distribution Board WD Washer cum Dryer W/D Washer and Dryer F Fridge DW Dishwasher WIW Walk-In Wardrobe
 WC Water Closet ST Storage HS Household Shelter TB Tallboy CH Wine Chiller

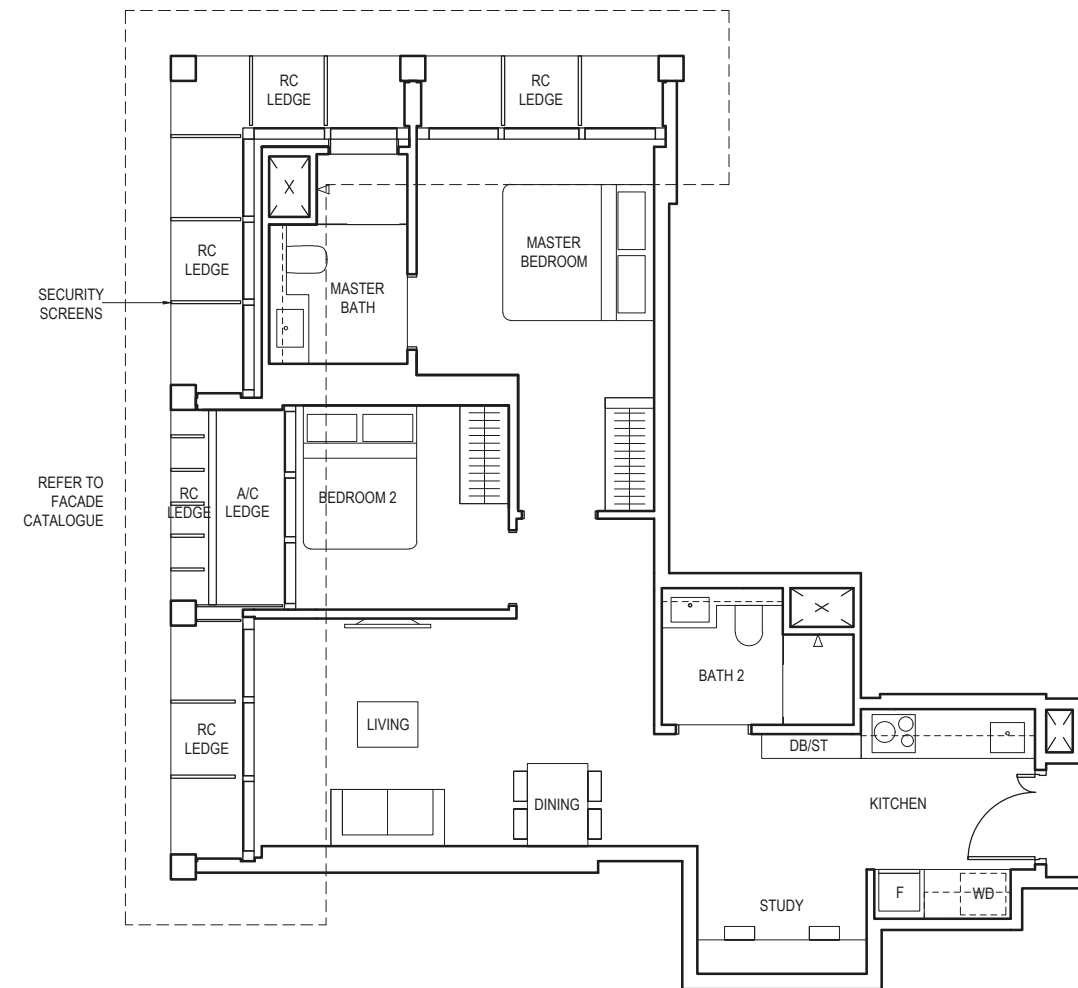
Area includes air-con (a/c) ledge, balcony and void where applicable. Please refer to the keyplan for orientation. The plans are subjected to change as may be approved by relevant authorities. All floor plans are approximate measurements only and are subjected to government re-survey. The balcony shall not be enclosed unless with the approved balcony screen. For an illustration of the approved balcony screen, please refer to the diagram annexed hereto as "Annexure A".

2-BEDROOM + STUDY

TYPE BS2

74 sq m / 797 sq ft

BLK 1
#40-05 to #44-05
#46-05 to #47-05



LEGEND (WHERE APPLICABLE)
 DB Distribution Board WD Washer cum Dryer W/D Washer and Dryer F Fridge DW Dishwasher WIW Walk-In Wardrobe
 WC Water Closet ST Storage HS Household Shelter TB Tallboy CH Wine Chiller

Area includes air-con (a/c) ledge, balcony and void where applicable. Please refer to the keyplan for orientation. The plans are subjected to change as may be approved by relevant authorities. All floor plans are approximate measurements only and are subjected to government re-survey. The balcony shall not be enclosed unless with the approved balcony screen. For an illustration of the approved balcony screen, please refer to the diagram annexed hereto as "Annexure A".

TYPE BS2(p)

74 sq m / 797 sq ft

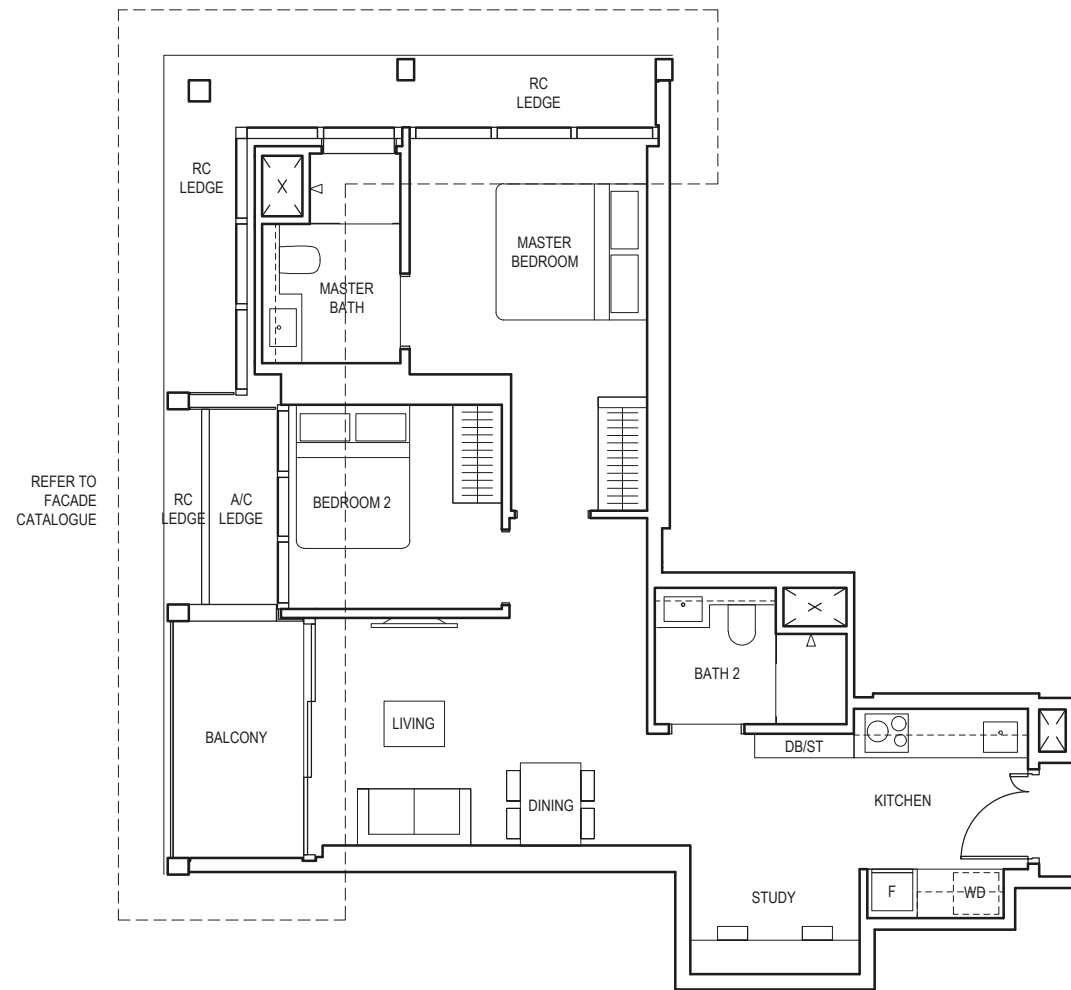
BLK 1
#48-05

2-BEDROOM + STUDY

TYPE BS2a

77 sq m / 829 sq ft

BLK 1
#04-05 to #22-05
#25-05 to #39-05



LEGEND (WHERE APPLICABLE)
 DB Distribution Board WD Washer cum Dryer W/D Washer and Dryer F Fridge DW Dishwasher WIW Walk-In Wardrobe
 WC Water Closet ST Storage HS Household Shelter TB Tallboy CH Wine Chiller

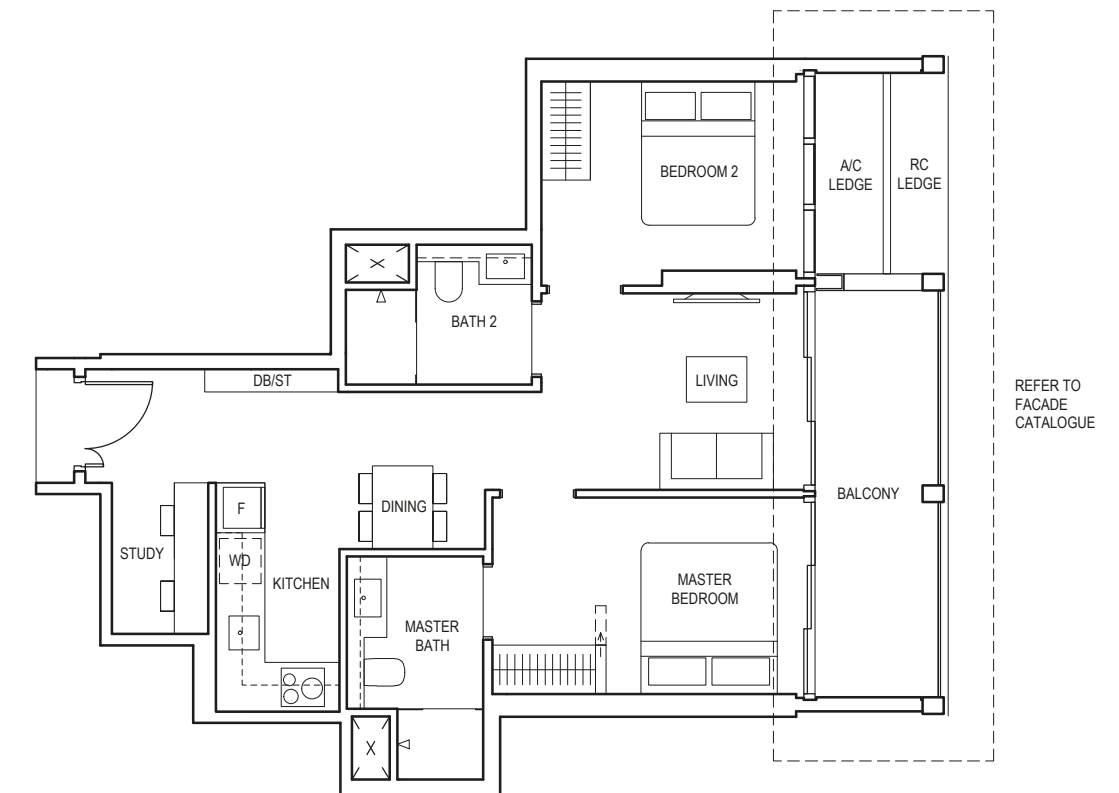
Area includes air-con (a/c) ledge, balcony and void where applicable. Please refer to the keyplan for orientation. The plans are subjected to change as may be approved by relevant authorities. All floor plans are approximate measurements only and are subjected to government re-survey. The balcony shall not be enclosed unless with the approved balcony screen. For an illustration of the approved balcony screen, please refer to the diagram annexed hereto as "Annexure A".

2-BEDROOM + STUDY

TYPE BS3

75 sq m / 807 sq ft

BLK 5
#04-24 to #23-24



LEGEND (WHERE APPLICABLE)
 DB Distribution Board WD Washer cum Dryer W/D Washer and Dryer F Fridge DW Dishwasher WIW Walk-In Wardrobe
 WC Water Closet ST Storage HS Household Shelter TB Tallboy CH Wine Chiller

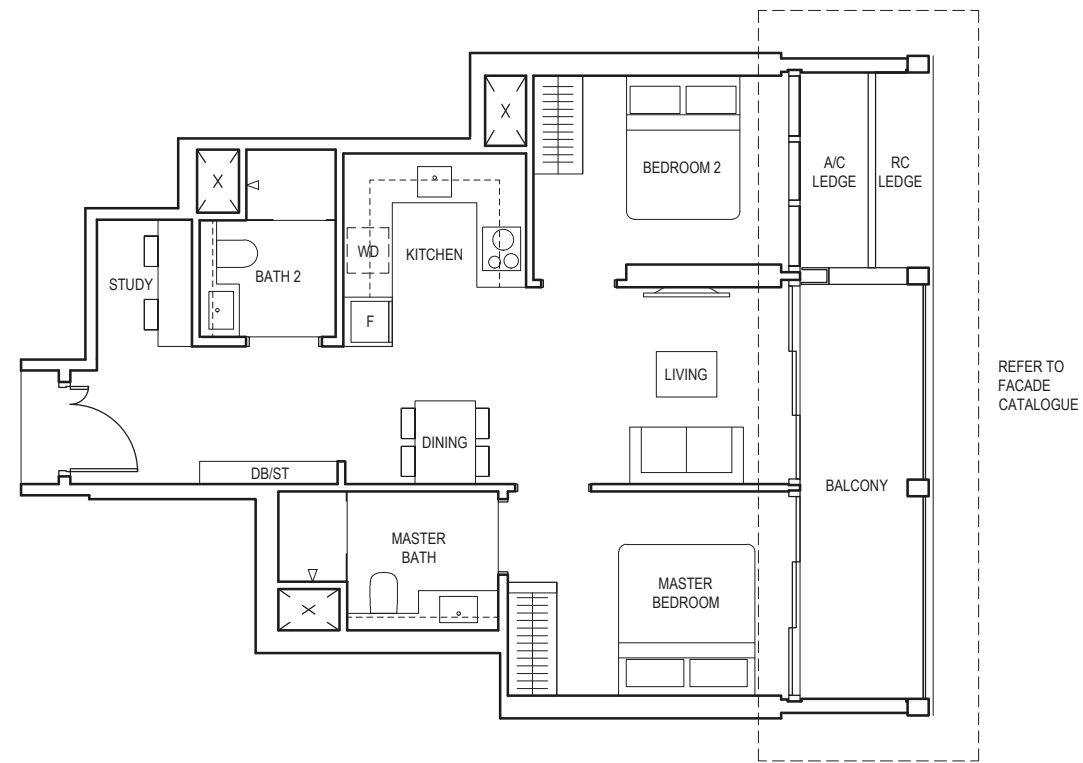
Area includes air-con (a/c) ledge, balcony and void where applicable. Please refer to the keyplan for orientation. The plans are subjected to change as may be approved by relevant authorities. All floor plans are approximate measurements only and are subjected to government re-survey. The balcony shall not be enclosed unless with the approved balcony screen. For an illustration of the approved balcony screen, please refer to the diagram annexed hereto as "Annexure A".

2-BEDROOM + STUDY

TYPE BS4

75 sq m / 807 sq ft

BLK 5
#04-25 to #23-25



LEGEND (WHERE APPLICABLE)
DB Distribution Board **WD** Washer cum Dryer **WD** Washer and Dryer **F** Fridge **DW** Dishwasher **WIW** Walk-In Wardrobe
WC Water Closet **ST** Storage **HS** Household Shelter **TB** Tallboy **CH** Wine Chiller

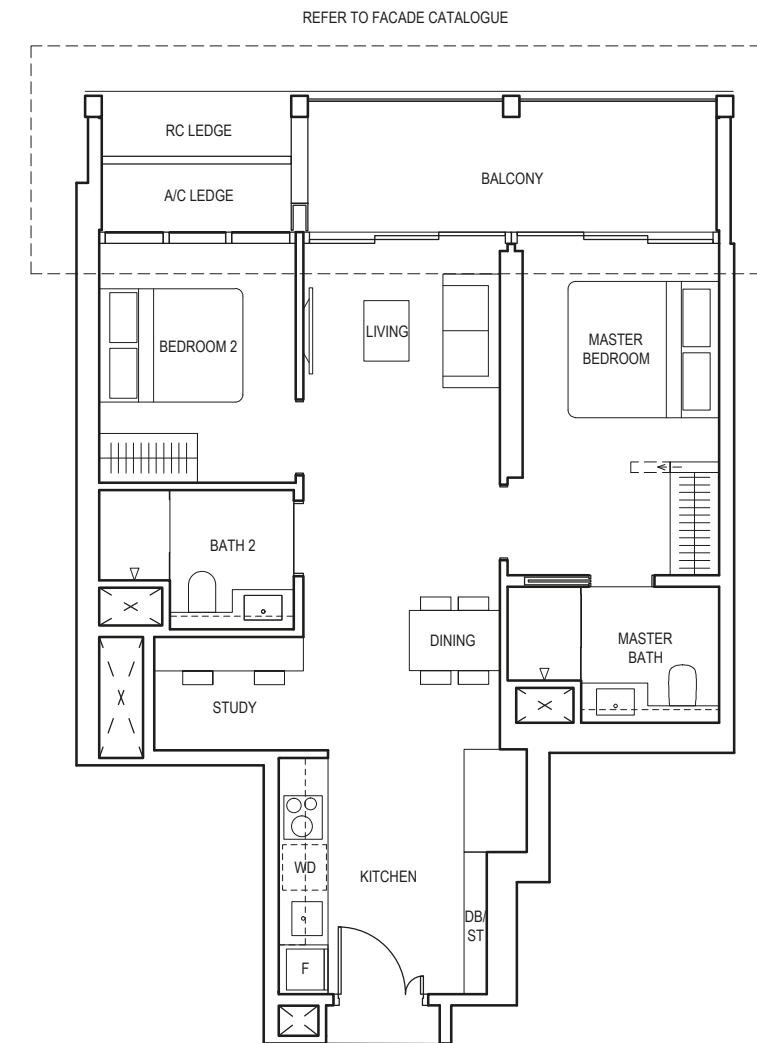
Area includes air-con (a/c) ledge, balcony and void where applicable. Please refer to the keyplan for orientation. The plans are subjected to change as may be approved by relevant authorities. All floor plans are approximate measurements only and are subjected to government re-survey. The balcony shall not be enclosed unless with the approved balcony screen. For an illustration of the approved balcony screen, please refer to the diagram annexed hereto as "Annexure A".

2-BEDROOM + STUDY

TYPE BS5

80 sq m / 861 sq ft

BLK 5
#04-21 to #23-21



LEGEND (WHERE APPLICABLE)
DB Distribution Board **WD** Washer cum Dryer **WD** Washer and Dryer **F** Fridge **DW** Dishwasher **WIW** Walk-In Wardrobe
WC Water Closet **ST** Storage **HS** Household Shelter **TB** Tallboy **CH** Wine Chiller

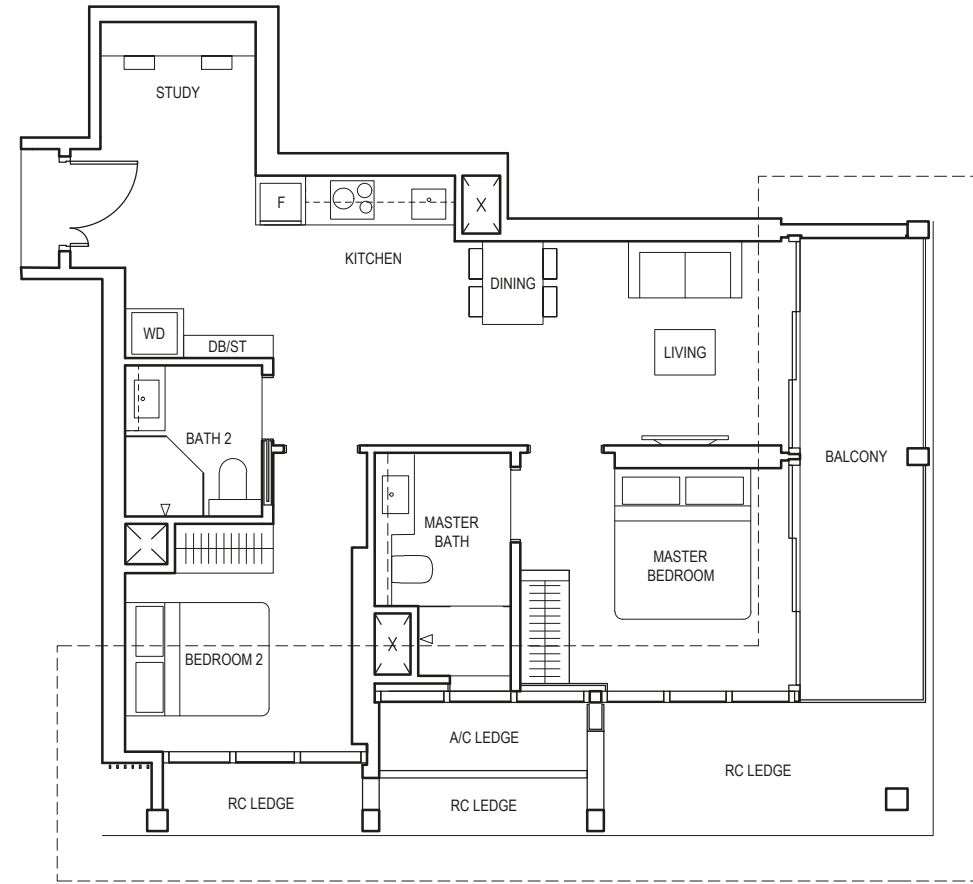
Area includes air-con (a/c) ledge, balcony and void where applicable. Please refer to the keyplan for orientation. The plans are subjected to change as may be approved by relevant authorities. All floor plans are approximate measurements only and are subjected to government re-survey. The balcony shall not be enclosed unless with the approved balcony screen. For an illustration of the approved balcony screen, please refer to the diagram annexed hereto as "Annexure A".

2-BEDROOM + STUDY

TYPE BS6

82 sq m / 883 sq ft

BLK 5
#04-26 to #23-26



REFER TO FACADE CATALOGUE



LEGEND (WHERE APPLICABLE)
 DB Distribution Board WD Washer cum Dryer W/D Washer and Dryer F Fridge DW Dishwasher WIW Walk-In Wardrobe
 WC Water Closet ST Storage HS Household Shelter TB Tallboy CH Wine Chiller

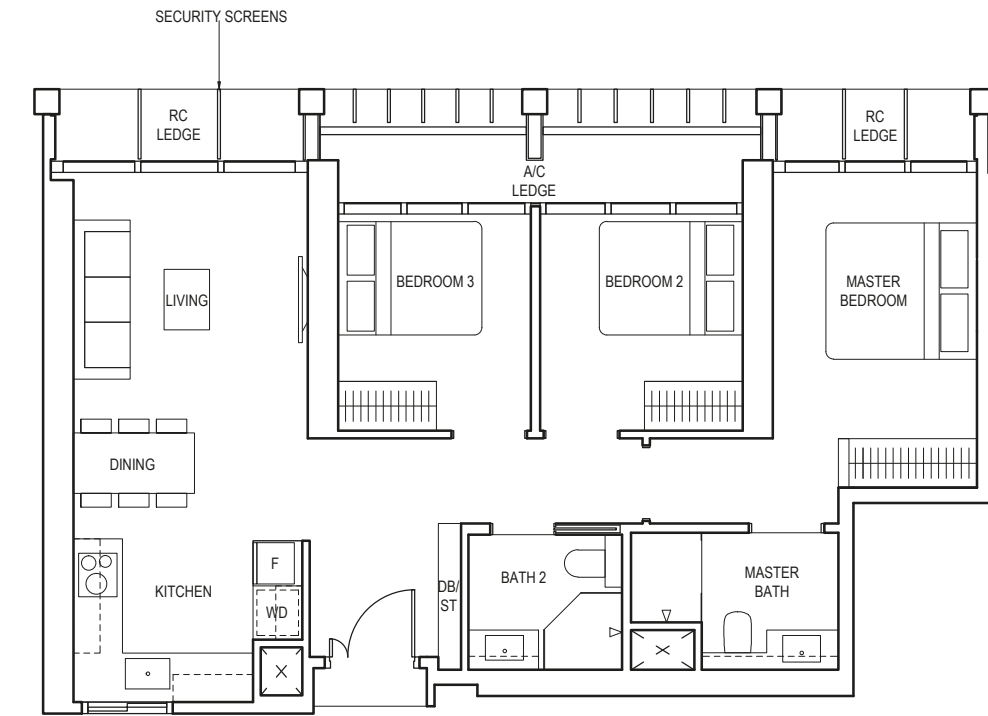
Area includes air-con (a/c) ledge, balcony and void where applicable. Please refer to the keyplan for orientation. The plans are subjected to change as may be approved by relevant authorities. All floor plans are approximate measurements only and are subjected to government re-survey. The balcony shall not be enclosed unless with the approved balcony screen. For an illustration of the approved balcony screen, please refer to the diagram annexed hereto as "Annexure A".

3-BEDROOM

TYPE C1

83 sq m / 893 sq ft

BLK 1
#40-07 to #44-07



LEGEND (WHERE APPLICABLE)
 DB Distribution Board WD Washer cum Dryer W/D Washer and Dryer F Fridge DW Dishwasher WIW Walk-In Wardrobe
 WC Water Closet ST Storage HS Household Shelter TB Tallboy CH Wine Chiller

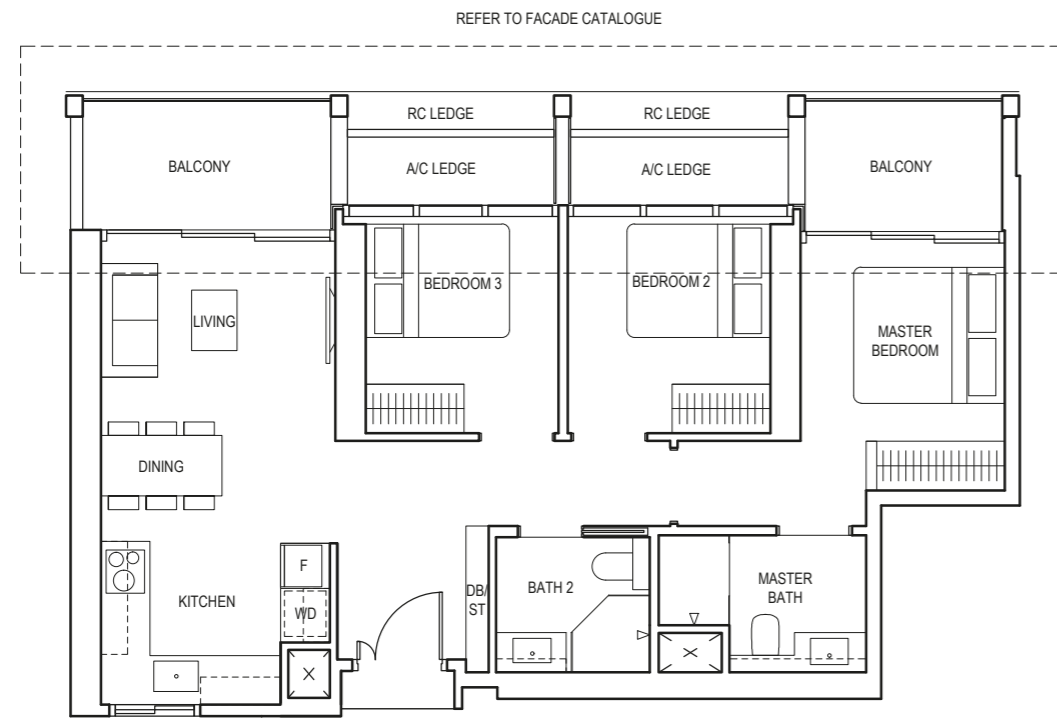
Area includes air-con (a/c) ledge, balcony and void where applicable. Please refer to the keyplan for orientation. The plans are subjected to change as may be approved by relevant authorities. All floor plans are approximate measurements only and are subjected to government re-survey. The balcony shall not be enclosed unless with the approved balcony screen. For an illustration of the approved balcony screen, please refer to the diagram annexed hereto as "Annexure A".

3-BEDROOM

TYPE C1a

88 sq m / 947 sq ft

BLK 1
#25-07 to #39-07



LEGEND (WHERE APPLICABLE)
 DB Distribution Board WD Washer cum Dryer W/D Washer and Dryer F Fridge DW Dishwasher WIW Walk-In Wardrobe
 WC Water Closet ST Storage HS Household Shelter TB Tallboy CH Wine Chiller

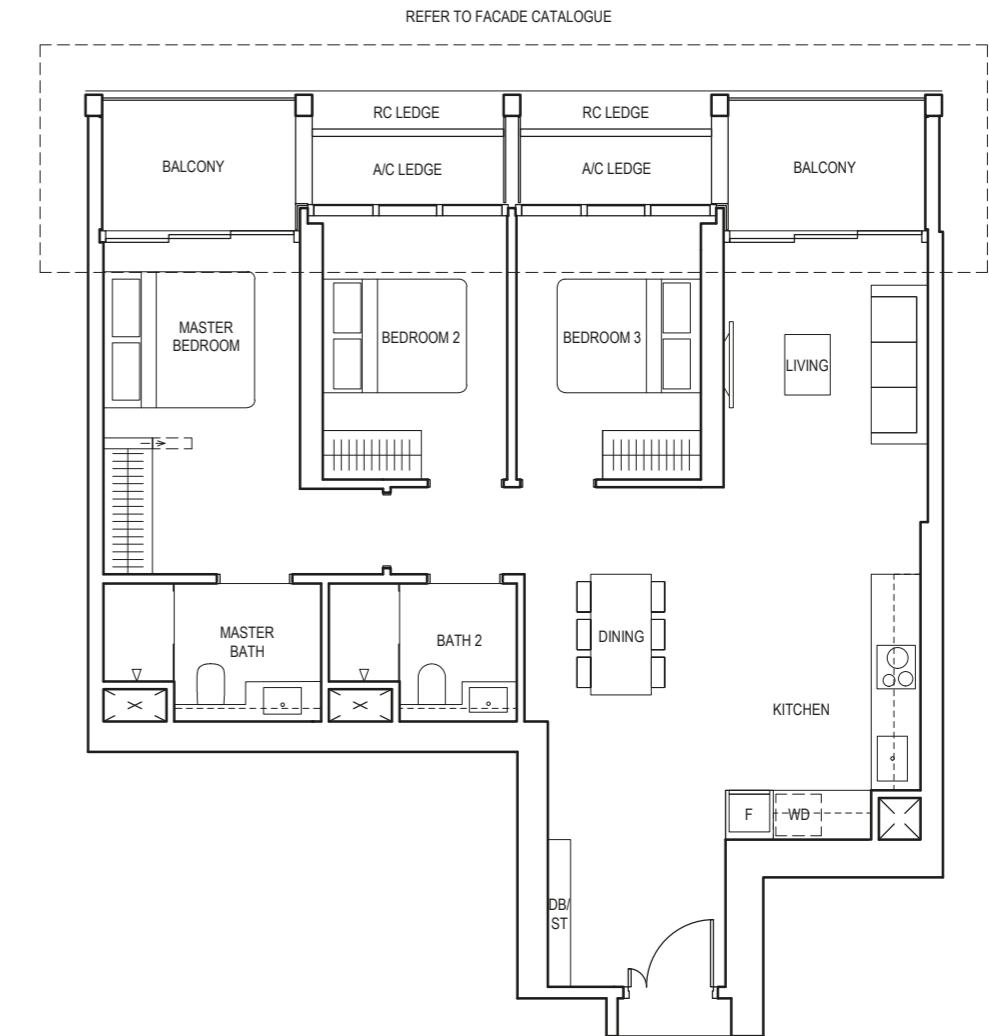
Area includes air-con (a/c) ledge, balcony and void where applicable. Please refer to the keyplan for orientation. The plans are subjected to change as may be approved by relevant authorities. All floor plans are approximate measurements only and are subjected to government re-survey. The balcony shall not be enclosed unless with the approved balcony screen. For an illustration of the approved balcony screen, please refer to the diagram annexed hereto as "Annexure A".

3-BEDROOM

TYPE C2

105 sq m / 1130 sq ft

BLK 5
#04-22 to #23-22



LEGEND (WHERE APPLICABLE)
 DB Distribution Board WD Washer cum Dryer W/D Washer and Dryer F Fridge DW Dishwasher WIW Walk-In Wardrobe
 WC Water Closet ST Storage HS Household Shelter TB Tallboy CH Wine Chiller

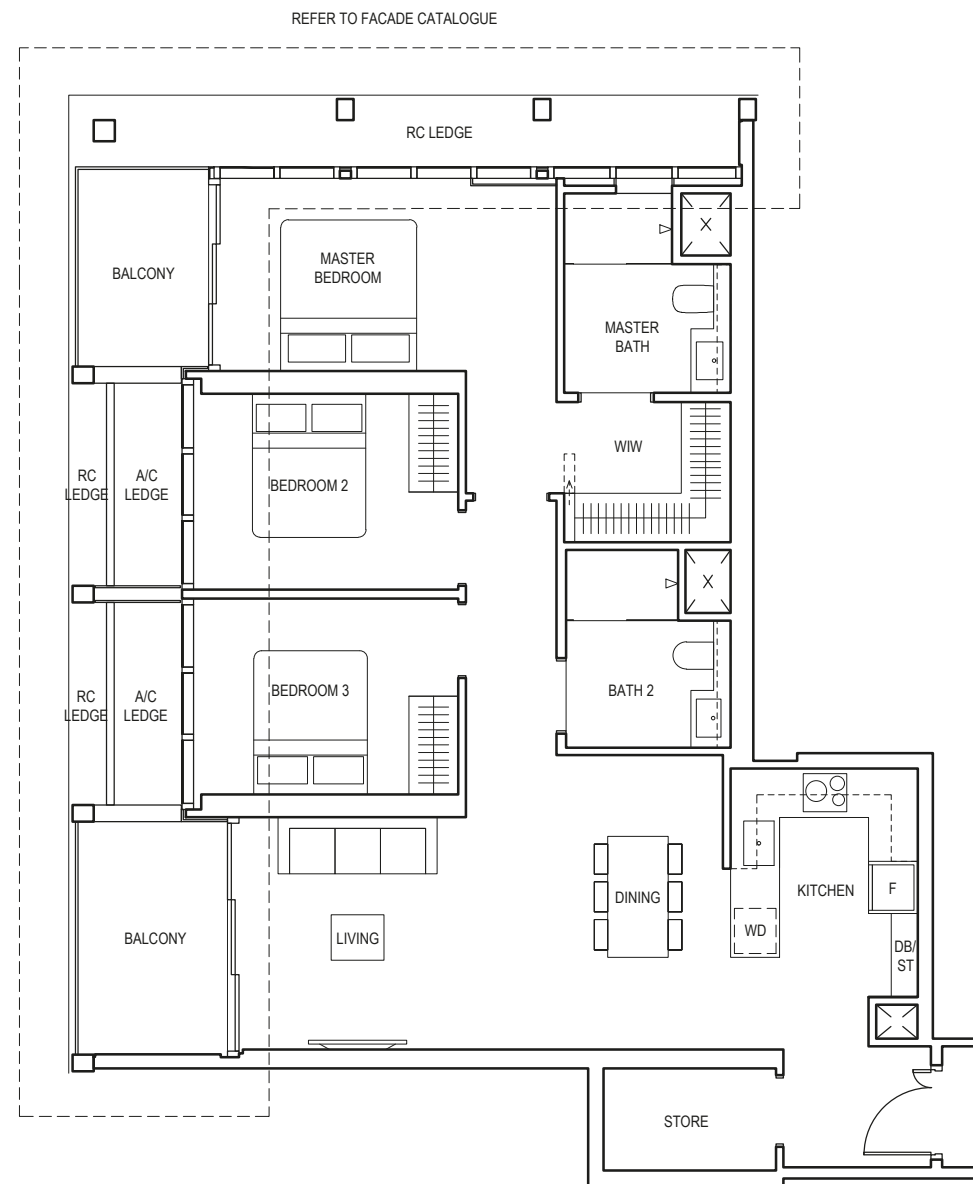
Area includes air-con (a/c) ledge, balcony and void where applicable. Please refer to the keyplan for orientation. The plans are subjected to change as may be approved by relevant authorities. All floor plans are approximate measurements only and are subjected to government re-survey. The balcony shall not be enclosed unless with the approved balcony screen. For an illustration of the approved balcony screen, please refer to the diagram annexed hereto as "Annexure A".

3-BEDROOM

TYPE C3

117 sq m / 1259 sq ft

BLK 5
#04-20 to #23-20



LEGEND (WHERE APPLICABLE)
 DB Distribution Board WD Washer cum Dryer W/D Washer and Dryer F Fridge DW Dishwasher WIW Walk-In Wardrobe
 WC Water Closet ST Storage HS Household Shelter TB Tallboy CH Wine Chiller

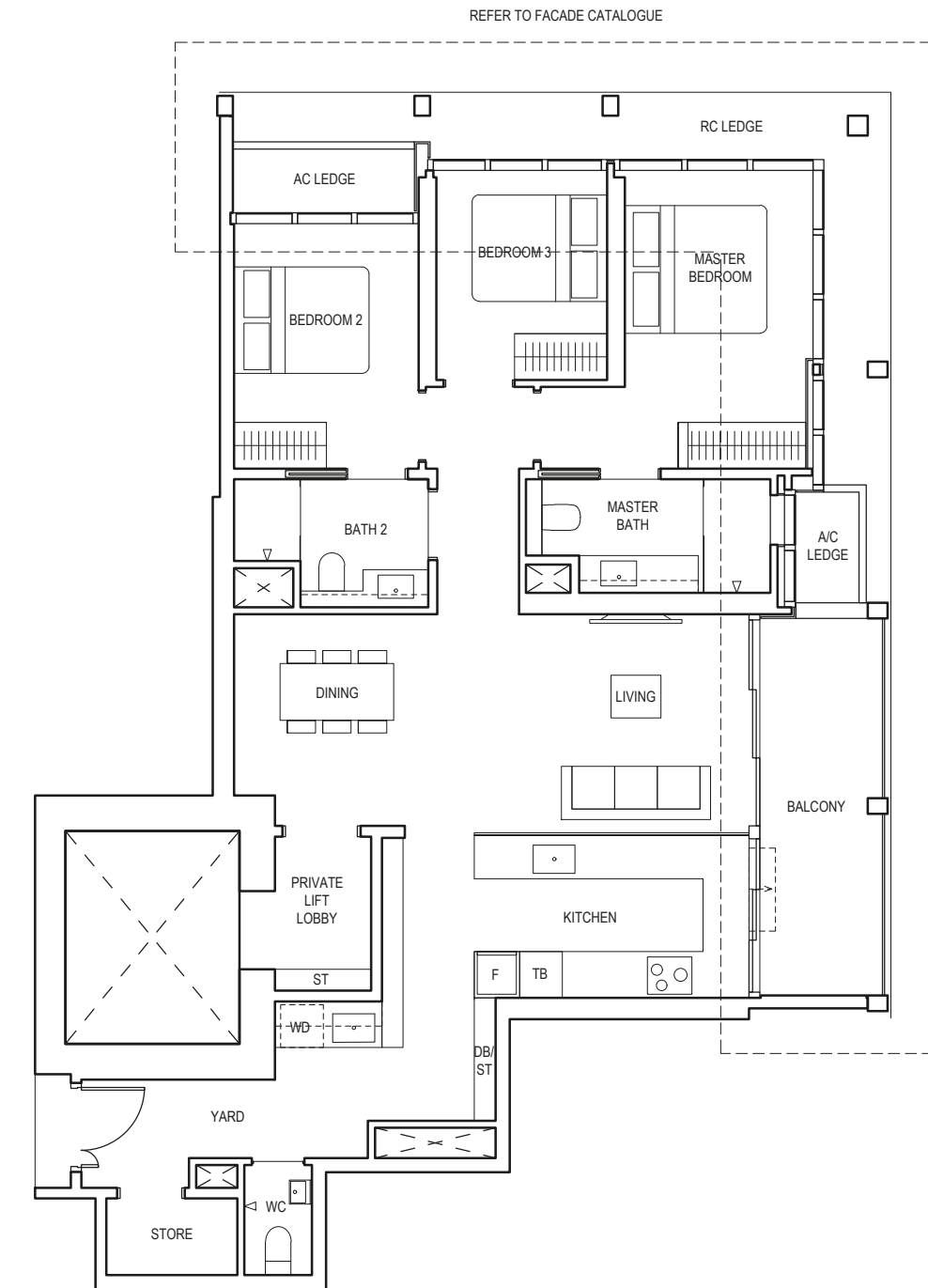
Area includes air-con (a/c) ledge, balcony and void where applicable. Please refer to the keyplan for orientation. The plans are subjected to change as may be approved by relevant authorities. All floor plans are approximate measurements only and are subjected to government re-survey. The balcony shall not be enclosed unless with the approved balcony screen. For an illustration of the approved balcony screen, please refer to the diagram annexed hereto as "Annexure A".

3-BEDROOM PREMIUM

TYPE CP1

122 sq m / 1313 sq ft

BLK 5
#04-23 to #23-23



LEGEND (WHERE APPLICABLE)
 DB Distribution Board WD Washer cum Dryer W/D Washer and Dryer F Fridge DW Dishwasher WIW Walk-In Wardrobe
 WC Water Closet ST Storage HS Household Shelter TB Tallboy CH Wine Chiller

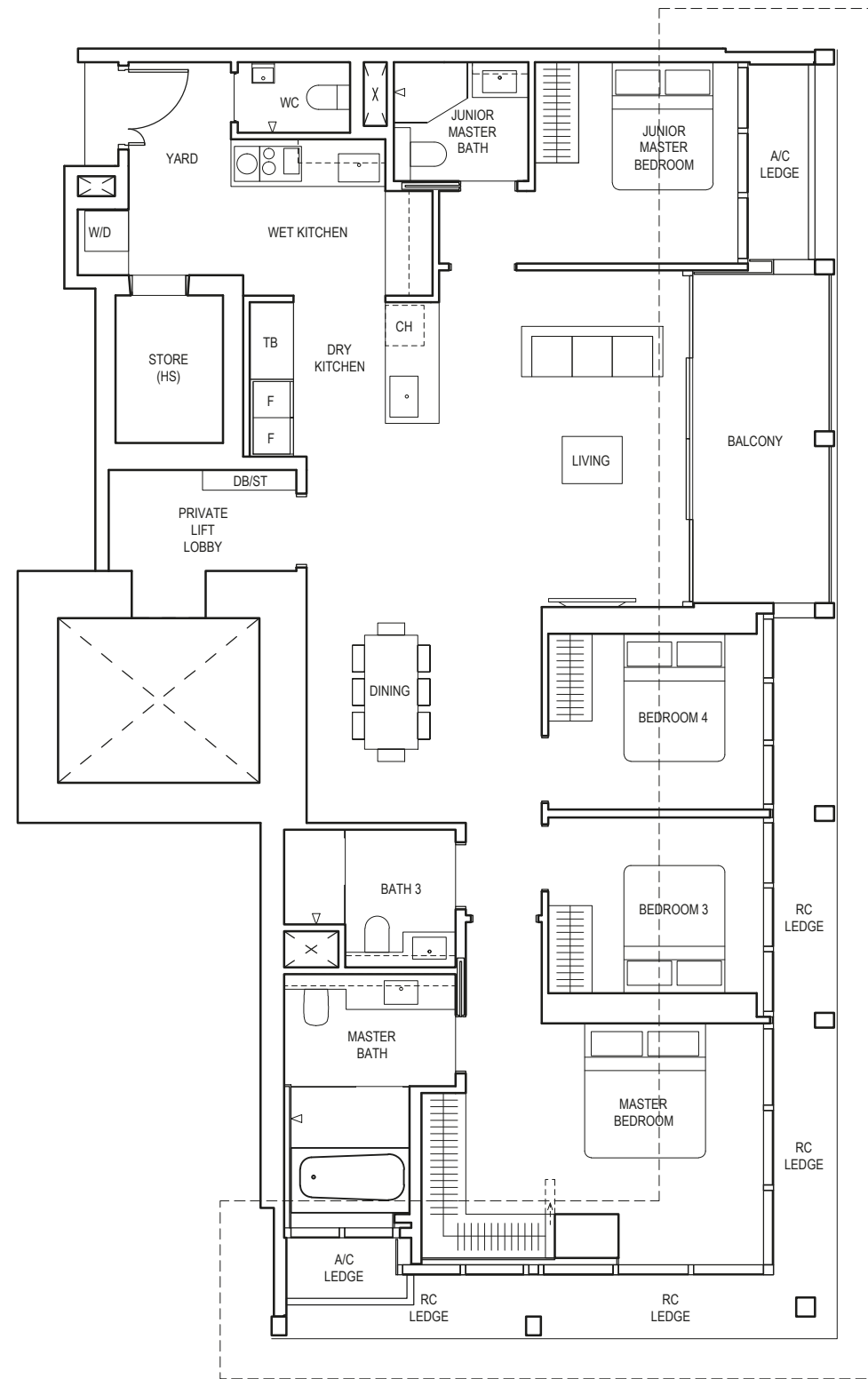
Area includes air-con (a/c) ledge, balcony and void where applicable. Please refer to the keyplan for orientation. The plans are subjected to change as may be approved by relevant authorities. All floor plans are approximate measurements only and are subjected to government re-survey. The balcony shall not be enclosed unless with the approved balcony screen. For an illustration of the approved balcony screen, please refer to the diagram annexed hereto as "Annexure A".

4-BEDROOM PREMIUM

TYPE DP1

163 sq m / 1755 sq ft

BLK 1
#25-10 to #44-10



REFER TO FACADE CATALOGUE



LEGEND (WHERE APPLICABLE)
 DB Distribution Board WD Washer cum Dryer W/D Washer and Dryer F Fridge DW Dishwasher WIW Walk-In Wardrobe
 WC Water Closet ST Storage HS Household Shelter TB Tallboy CH Wine Chiller

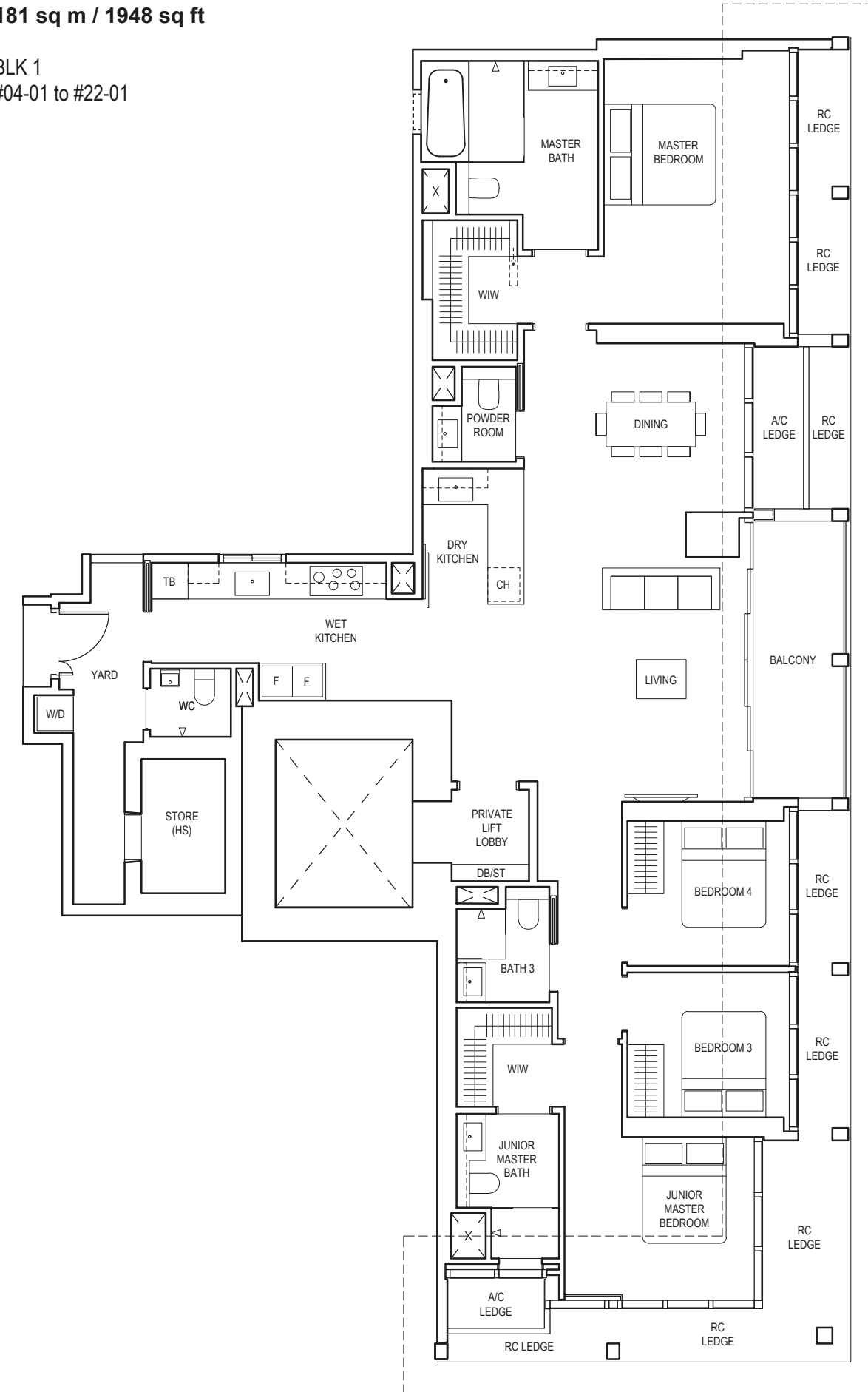
Area includes air-con (a/c) ledge, balcony and void where applicable. Please refer to the keyplan for orientation. The plans are subjected to change as may be approved by relevant authorities. All floor plans are approximate measurements only and are subjected to government re-survey. The balcony shall not be enclosed unless with the approved balcony screen. For an illustration of the approved balcony screen, please refer to the diagram annexed hereto as "Annexure A".

4-BEDROOM PREMIUM

TYPE DP2

181 sq m / 1948 sq ft

BLK 1
#04-01 to #22-01



REFER TO FACADE CATALOGUE



LEGEND (WHERE APPLICABLE)
 DB Distribution Board WD Washer cum Dryer W/D Washer and Dryer F Fridge DW Dishwasher WIW Walk-In Wardrobe
 WC Water Closet ST Storage HS Household Shelter TB Tallboy CH Wine Chiller

Area includes air-con (a/c) ledge, balcony and void where applicable. Please refer to the keyplan for orientation. The plans are subjected to change as may be approved by relevant authorities. All floor plans are approximate measurements only and are subjected to government re-survey. The balcony shall not be enclosed unless with the approved balcony screen. For an illustration of the approved balcony screen, please refer to the diagram annexed hereto as "Annexure A".

TYPE DP2(p)

181 sq m / 1948 sq ft

BLK 1
#23-01

4-BEDROOM PREMIUM

TYPE DP3

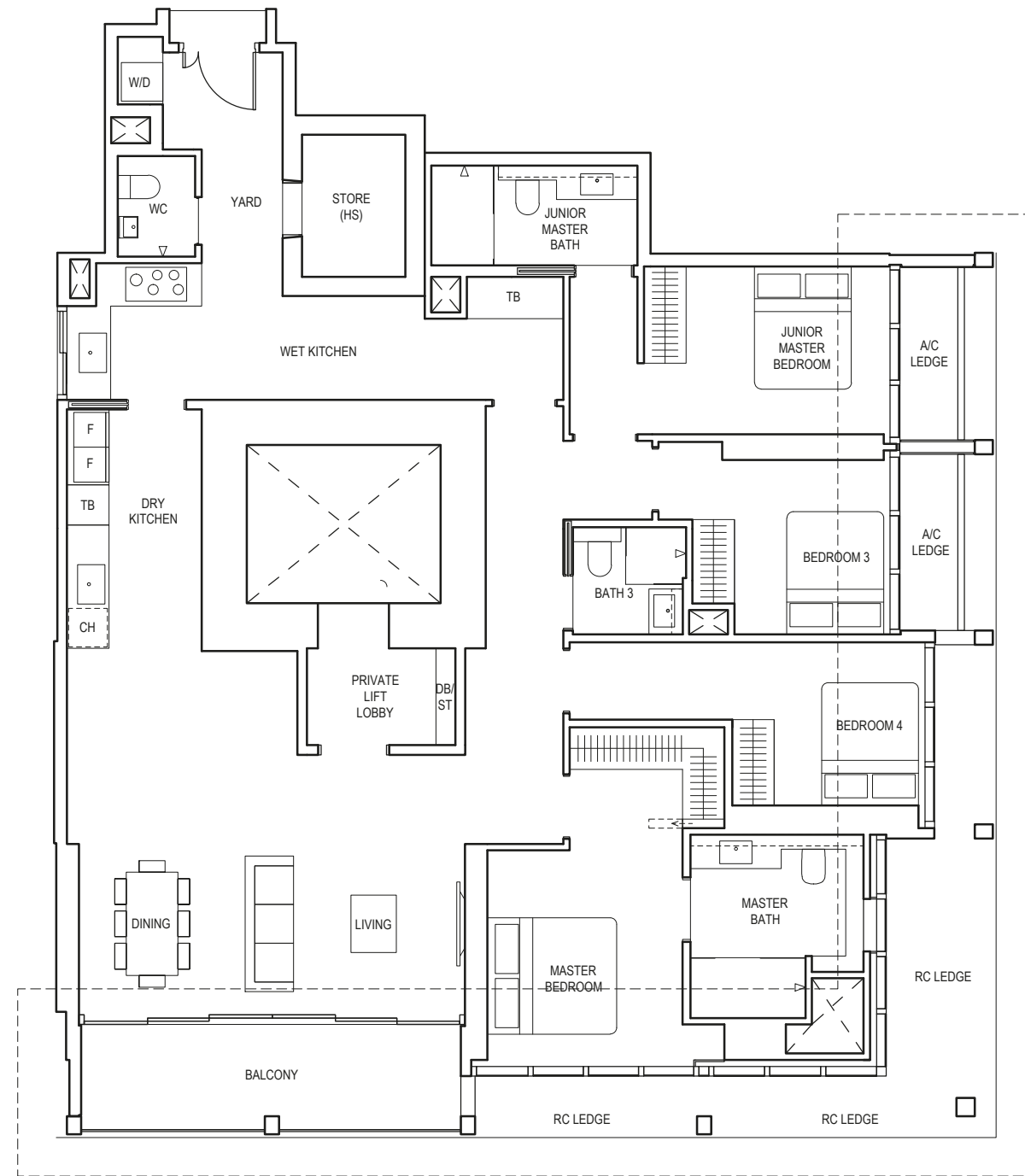
182 sq m / 1959 sq ft

BLK 1
#04-11 to #22-11

TYPE DP3(p)

182 sq m / 1959 sq ft

BLK 1
#23-11



REFER TO FACADE CATALOGUE

BASK IN THE
SPACIOUSNESS
OF A RARE CITY
HOME



LEGEND (WHERE APPLICABLE)
 DB Distribution Board WD Washer cum Dryer W/D Washer and Dryer F Fridge DW Dishwasher WIW Walk-In Wardrobe
 WC Water Closet ST Storage HS Household Shelter TB Tallboy CH Wine Chiller

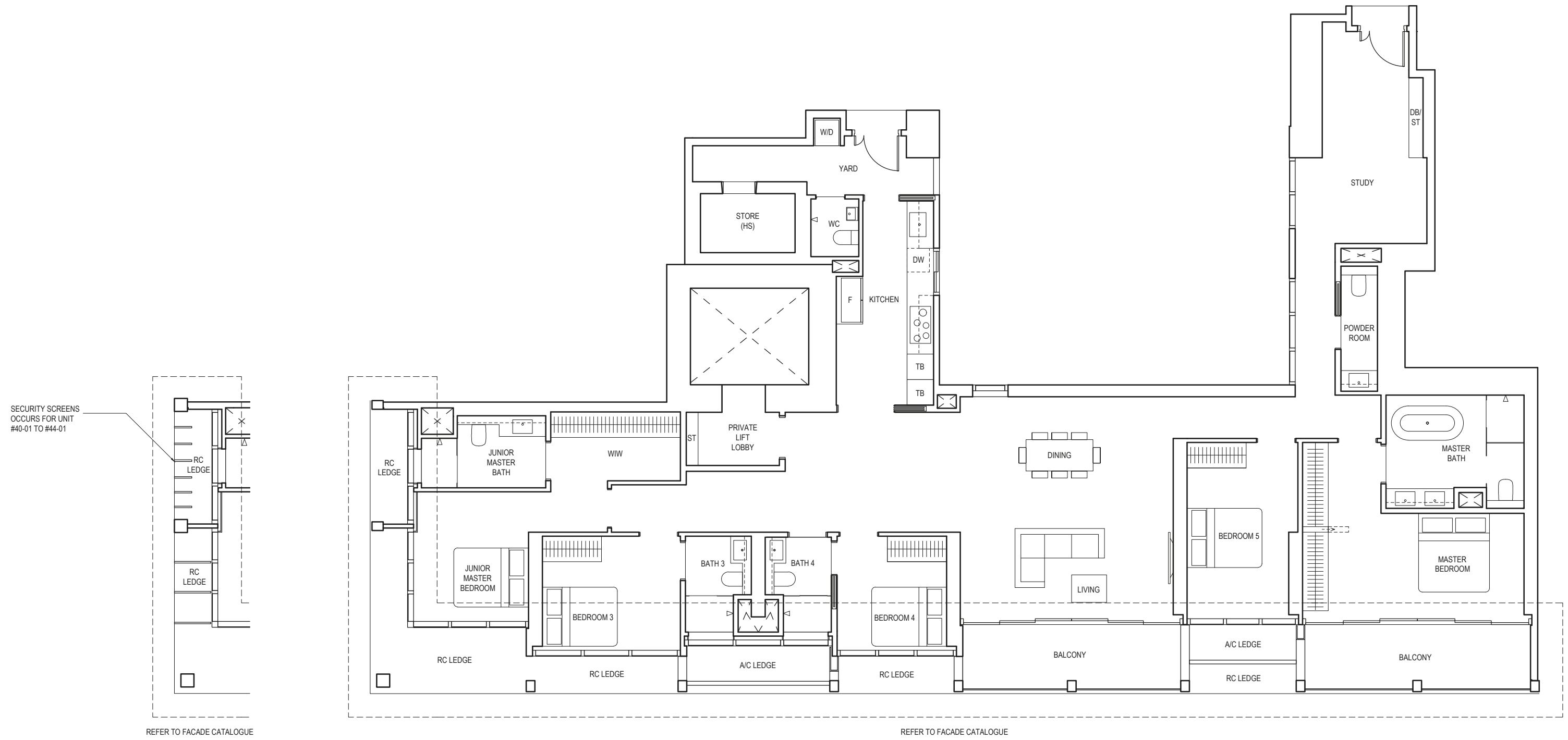
Area includes air-con (a/c) ledge, balcony and void where applicable. Please refer to the keyplan for orientation. The plans are subjected to change as may be approved by relevant authorities. All floor plans are approximate measurements only and are subjected to government re-survey. The balcony shall not be enclosed unless with the approved balcony screen. For an illustration of the approved balcony screen, please refer to the diagram annexed hereto as "Annexure A".

5-BEDROOM PREMIUM

TYPE EP1

259 sq m / 2788 sq ft

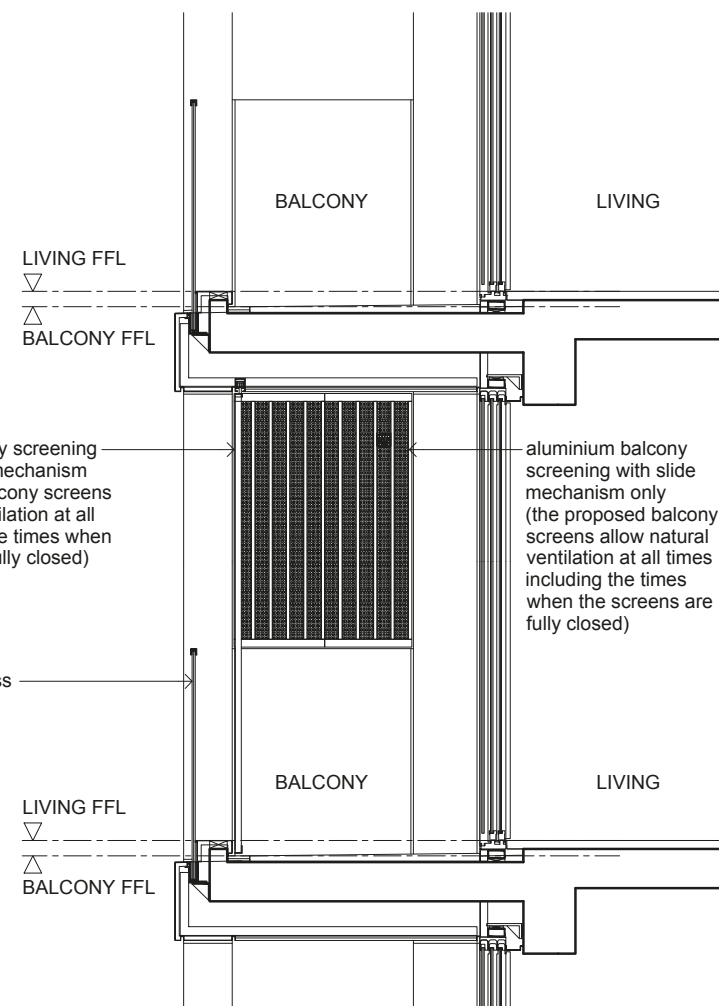
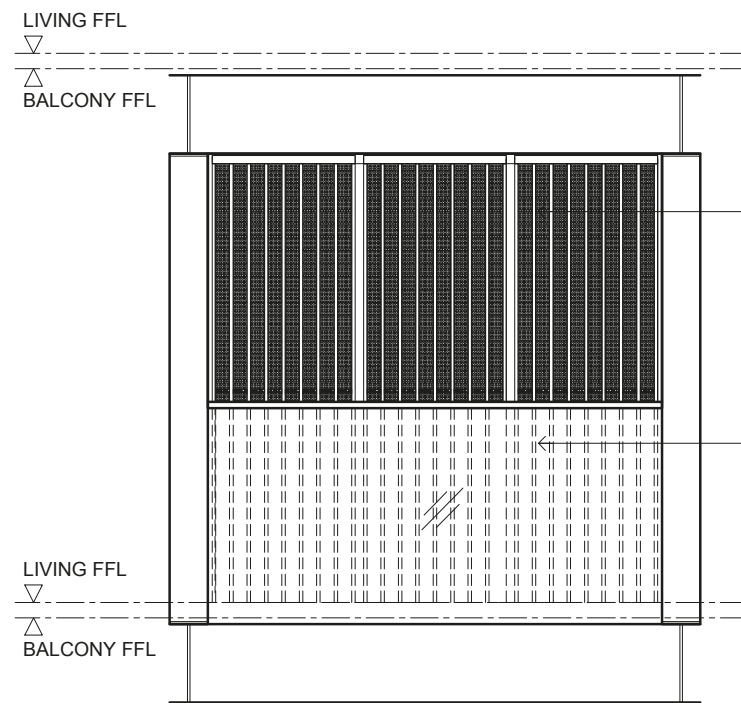
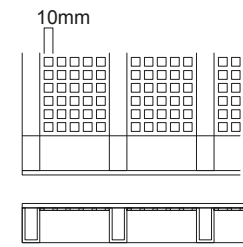
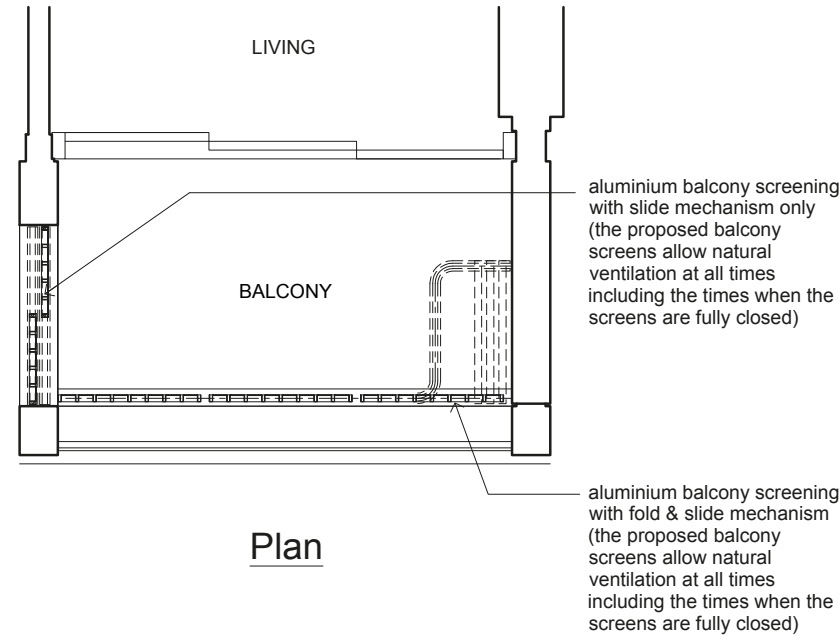
BLK 1
#25-01 to #44-01



LEGEND (WHERE APPLICABLE)
 DB Distribution Board WD Washer cum Dryer W/D Washer and Dryer F Fridge DW Dishwasher WIW Walk-In Wardrobe
 WC Water Closet ST Storage HS Household Shelter TB Tallboy CH Wine Chiller

Area includes air-con (a/c) ledge, balcony and void where applicable. Please refer to the keyplan for orientation. The plans are subjected to change as may be approved by relevant authorities. All floor plans are approximate measurements only and are subjected to government re-survey. The balcony shall not be enclosed unless with the approved balcony screen. For an illustration of the approved balcony screen, please refer to the diagram annexed hereto as "Annexure A".

ANNEXURE A: APPROVED TYPICAL BALCONY SCREEN DESIGN



Note:
The balcony shall not be enclosed unless with the approved balcony screen as shown above.
The cost of the screen and installation shall be borne by the Purchaser.
Where required to facilitate installation, the Architect reserves the right to determine appropriate details not limited to fixing details and colour tones.

JOINTLY DEVELOPED BY:

CapitaLand

CITY DEVELOPMENTS LIMITED

Developer: Legend Quay Pte. Ltd. (Registration No. 201914652M), Legend Commercial Trustee Pte. Ltd. (Registration No. 201914656R) (in its capacity as trustee-manager of Legend Commercial Trust), DBS Trustee Limited (Registration No. 197502043G) (in its capacity as trustee of Gemini One Trust) and DBS Trustee Limited (Registration No. 197502043G) (in its capacity as trustee of Ascott Real Estate Investment Trust) • Housing Developer's Licence No.: C1407 • Vendor: Legend Quay Pte. Ltd. • Tenure of Land: Leasehold tenure of 99 years commencing from 17 September 2021 • Lot No.: Lots 146W-PT (now known as Lot 80001T) and 147V both of TS 9 at River Valley Road • Expected Date of Vacant Possession: 30 June 2027 • Expected Date of Legal Completion: 30 June 2030

While reasonable care has been taken in the preparation of this brochure, neither the developer nor its agents will be held responsible for any inaccuracies or omissions. To the extent permissible by law, the statements, information and depictions in this brochure may not be relied upon as statements or representations of fact, and they are not intended to form any part of the contract for the sale of the housing units. In particular, visual representations such as renderings, illustrations, pictures and drawings are artists' impressions only and photographs are only decor suggestions and cannot be regarded as representations of fact. The brand, colour and model of all materials, fittings, equipment, finishes, installations and appliances supplied shall be provided subject to the developer's architect's selection, market availability and at the sole discretion of the developer. All information and specifications contained in this brochure are current at the time of going to press and are subject to such changes as are required by the relevant authorities or the developer. All plans and models are not to scale unless expressly stated and are subject to any amendments which are required or approved by the relevant authorities. All areas and measurements stated in the brochure are approximate only and subject to final survey. The Sale and Purchase Agreement embodies all the terms and conditions between the developer and the purchaser and supersedes and cancels in all respects all previous representations, warranties, promises, inducements or statements of intention, whether written or oral made by the developer and/or the developer's agent which are not embodied in the Sale and Purchase Agreement.

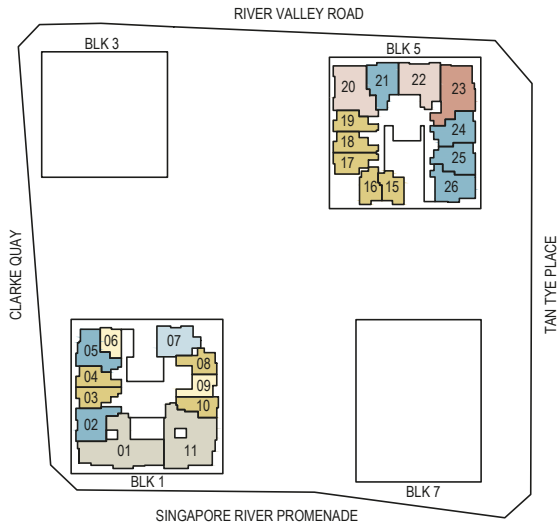
Premier Residential Services: Please note that the use of these services and facilities are chargeable as they are provided by third-party service providers ("Service Providers"). While our Residential Host will assist in making arrangements, all costs incurred for use of these services and facilities are to be borne by residents. Provision of these services and facilities may be modified according to availability and at the discretion of the Service Providers. The Service Providers also reserve the right to terminate the services and facilities without prior notice. Other terms and conditions apply. Visual representations are not representations of the actual provision.

Smart Home: The unit will be supplied and installed with the following items ("SMART Home System"): a) Smart Home Gateway, b) Smart Speaker and Voice Control Assistant, c) IP Camera (only applicable for units with private lift), d) Tablet Central Console, e) Motion Sensor, f) Digital Lockset, g) Doorbell with Camera, h) Lighting Control, i) Energy Monitoring, j) Homehub Siren Alarm, k) Air-Conditioning Control System, l) Home Fire Alarm Device (HFAD). The make, model, brand, design and technology of the SMART Home System to be supplied and installed in the actual unit may differ from the above illustration and are subject to change. Terms and conditions apply. Buyers shall be required to liaise with the smart home vendor instead of the developer to make all arrangements for the set up and configuration of, and for any queries, defects, maintenance and/or upgrade issues with the SMART Home System at buyers' own costs. Items/devices which are not listed above are not included in the SMART Home System and may be purchased from the smart home vendor directly and installed at buyers' own costs after the handover of the unit.

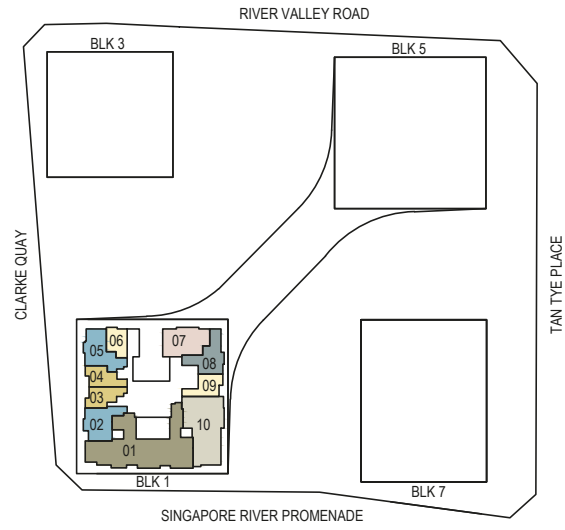
This brochure is printed on eco-friendly paper, October 2021.

RESIDENTIAL STOREY KEY PLANS

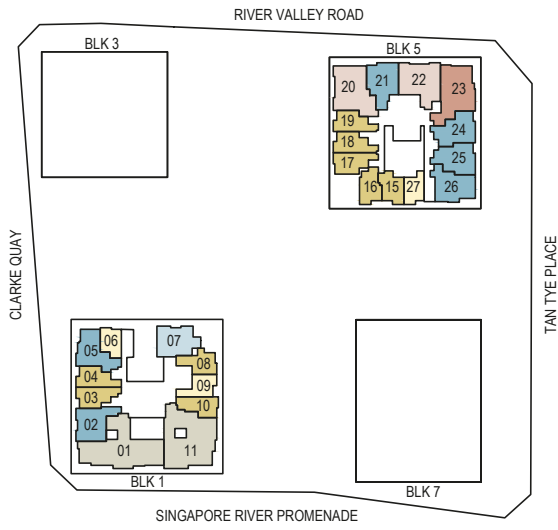
4TH - 7TH STOREY



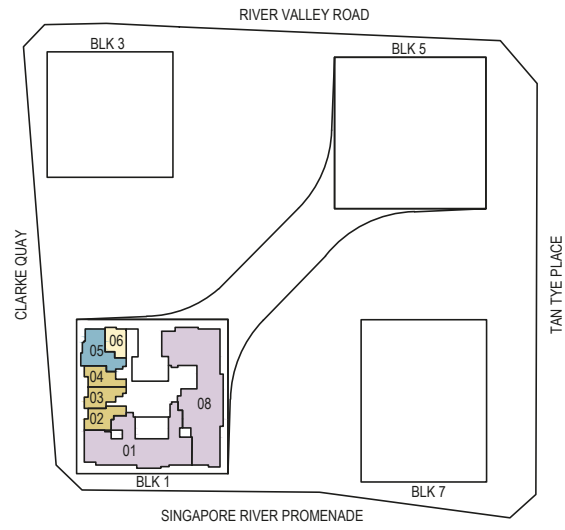
40TH - 44TH STOREY



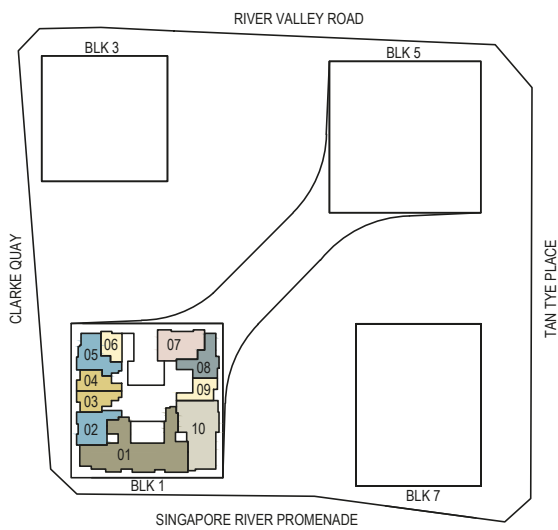
8TH - 23RD STOREY



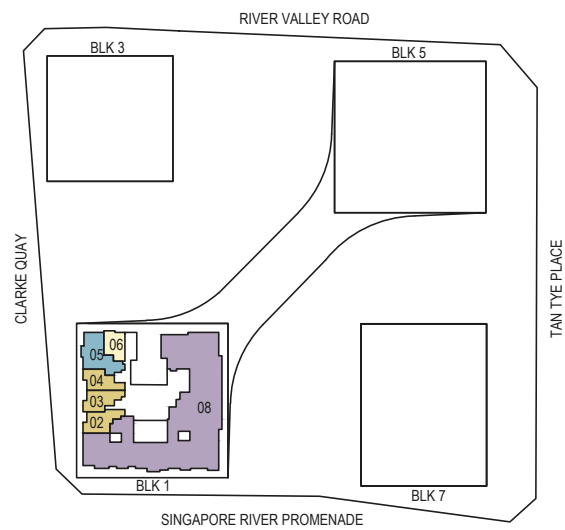
46TH - 47TH STOREY



25TH - 39TH STOREY



48TH STOREY



- | | | | |
|-------------------|---------------------------|-------------------|-------------------|
| 1-BEDROOM | 2-BEDROOM | 3-BEDROOM | 5-BEDROOM PREMIUM |
| 1-BEDROOM + STUDY | 2-BEDROOM + ENSUITE STUDY | 3-BEDROOM PREMIUM | SKY SUITE |
| | 2-BEDROOM + STUDY | 4-BEDROOM PREMIUM | SUPER PENTHOUSE |

Key plans are not drawn to scale. The shading and outline of the key plans are for illustrative purposes only. The boundary lines of the units set out here are not to be taken as a factual representation of the actual units. Kindly refer to the approved building plans for the actual unit outline/boundary lines.